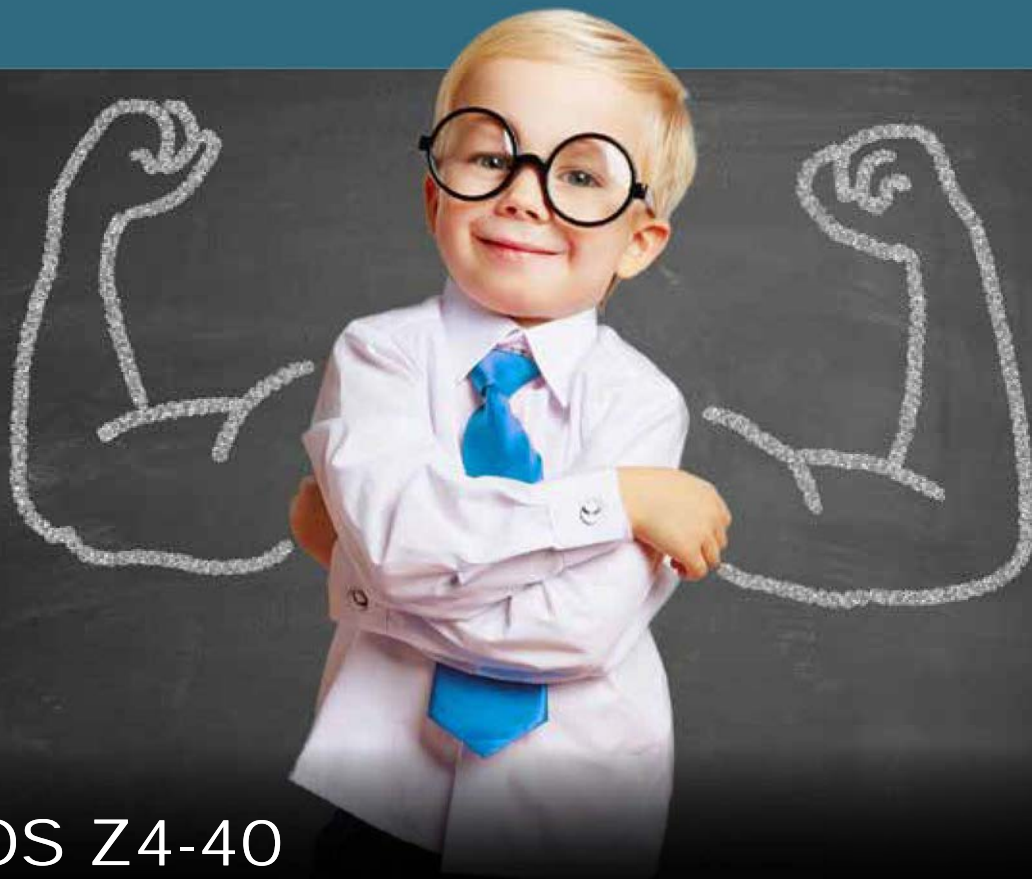


The NEW latc lock for heavy weights



# LO PEQUEÑO SE CONVIERTE GRANDE

"Nuevo gatillo para cargas fuertes"

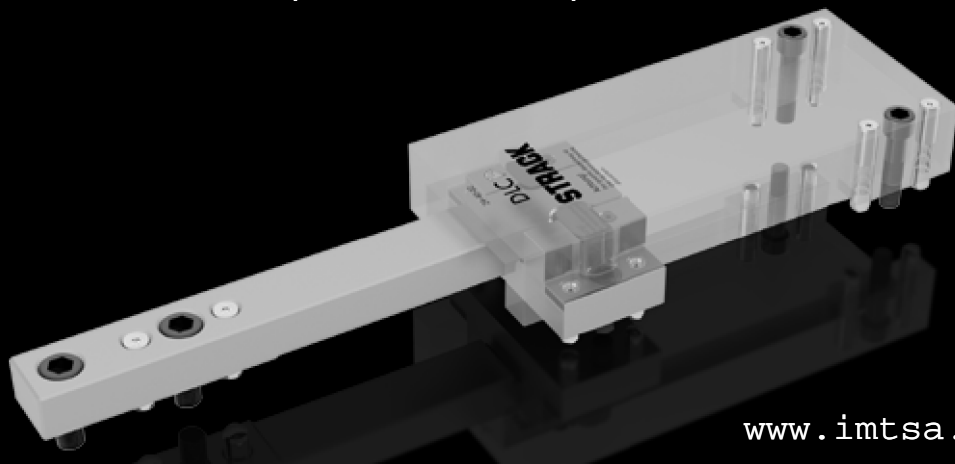


## GATILLOS Z4-40

LATCH LOCK Z4-40

Seguimos mejorando y aumentando nuestra gama de gatillos...

- ++ Capacidad de carga superior a 80KN
- ++ Mayor propiedad de deslizamiento y mantenimiento debido al recubrimiento DLC en las zonas de contacto
- ++ Disponible en la versión para doble expulsión

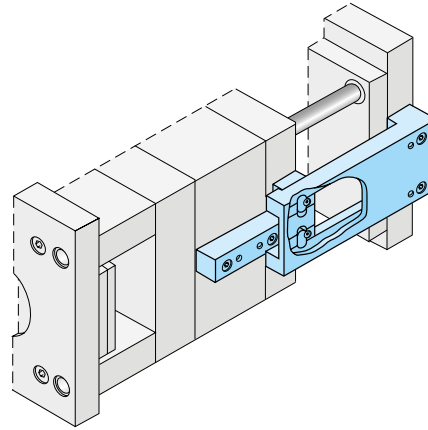
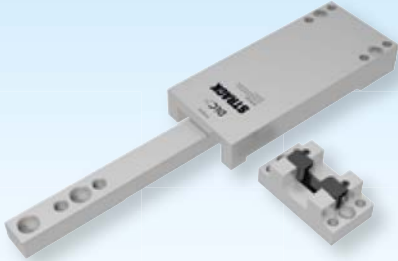


Klinkenzüge

Latch locks

Ouvres-moules

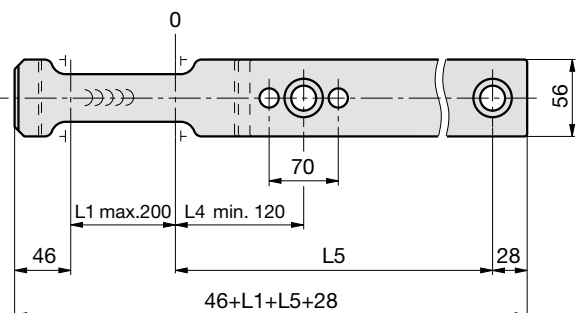
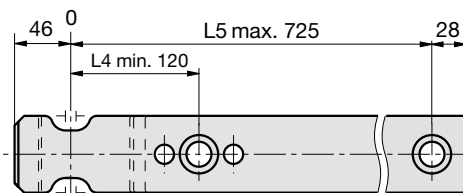
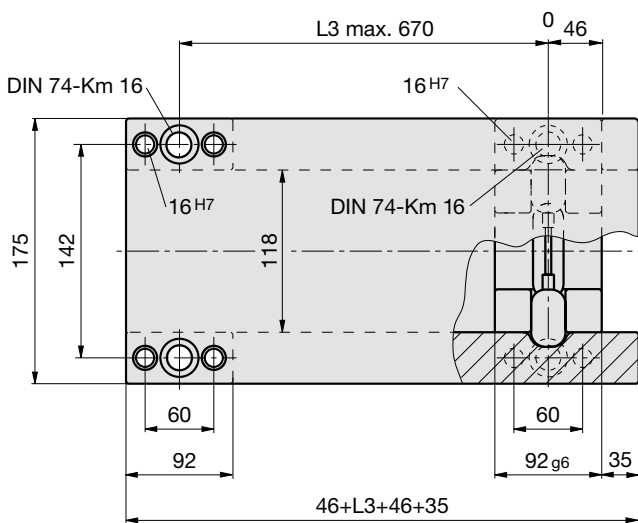
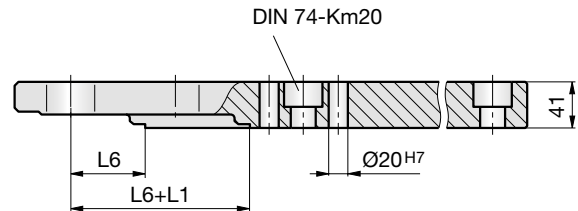
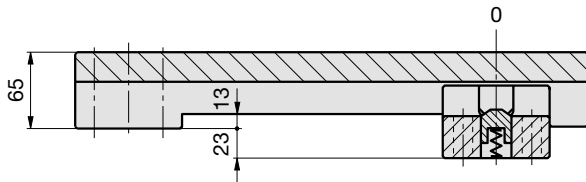
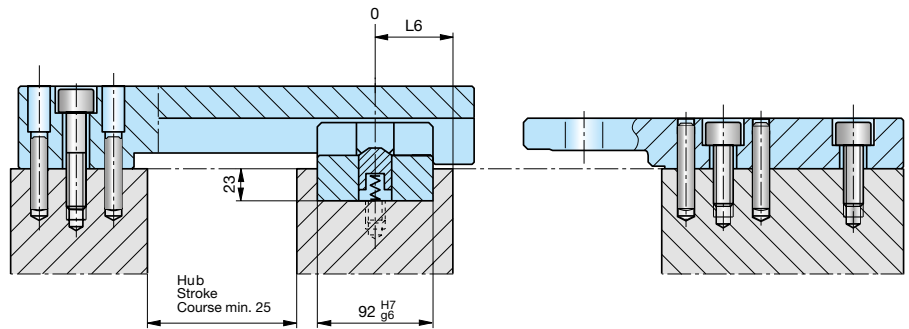
DLC 



Z 4-40-

**i** deutsch 6.89-98  
english 6.119-128  
français 6.149-158

Z 4-40-L1-  
L3-L4-L5-L6

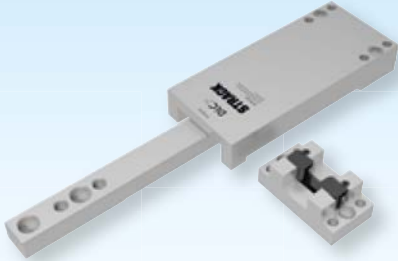


Klinkenzüge

Latch locks


Ouvres-moules

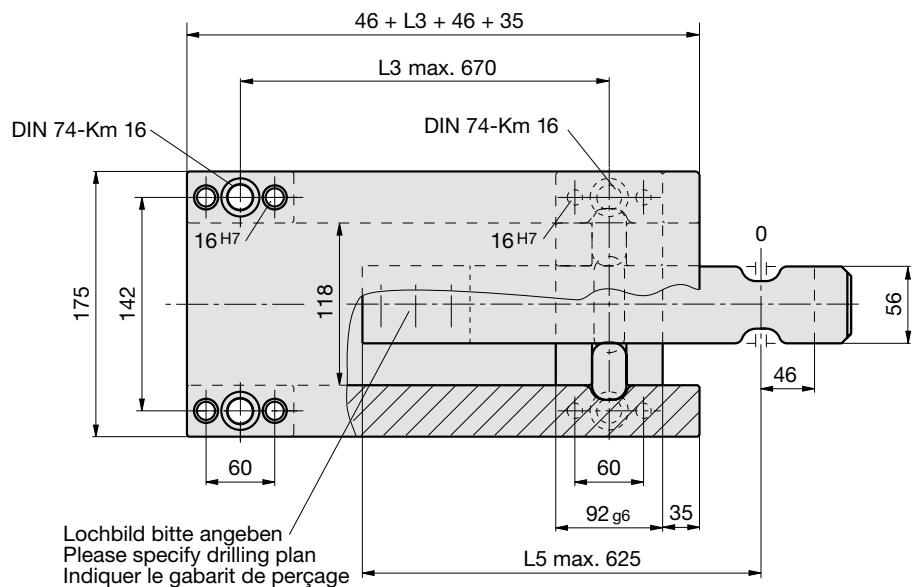
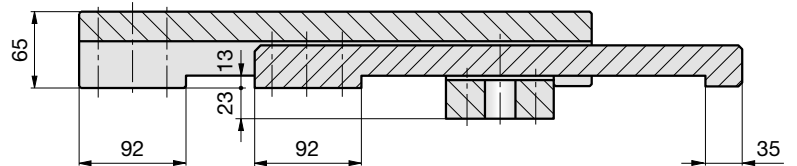
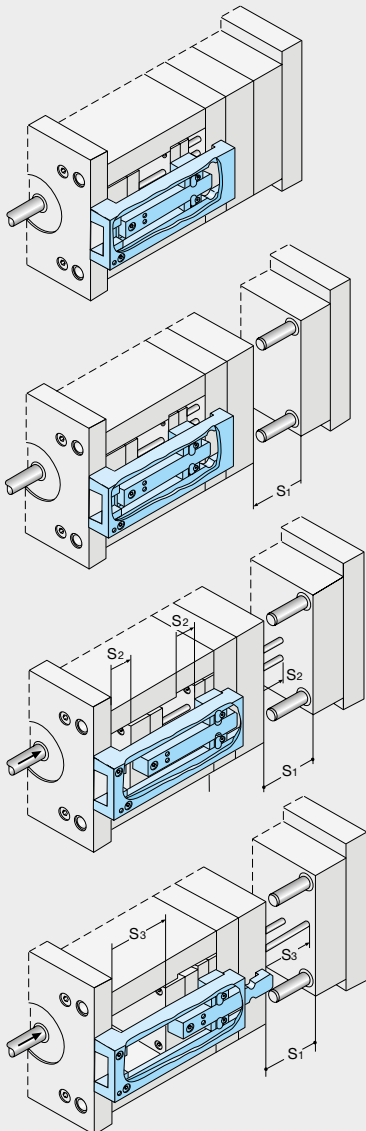
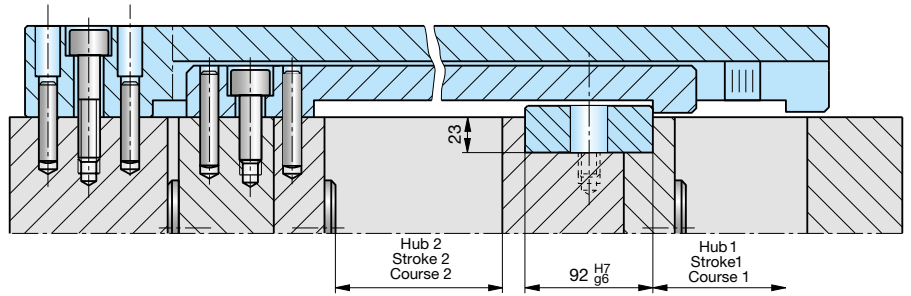
DLC 



Z 4-42-

deutsch 6.89-98  
english 6.119-128  
français 6.149-158

 Z 4-42-L3-L5



**Klinkenzüge**

**Latch locks**

**Ouvres-moules**

**Z 4-40-**

**i** deutsch 6.89-98  
english 6.119-128  
français 6.149-158

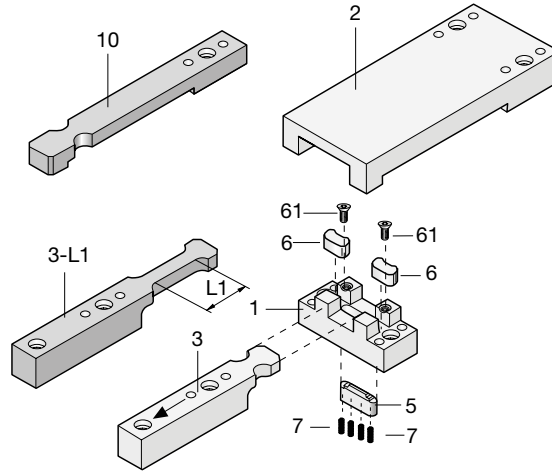
Z 4-40-L1-  
L3-L4-L5-L6



**Z 4-42-**

**i** deutsch 6.89-98  
english 6.119-128  
français 6.149-158

Z 4-42-L3-L5



Stückliste  
Parts list  
Liste des pièces

Type	Pos. Item Pos.	Bezeichnung	Description	Désignation	Stück Quant. Nbr.	Mat.-Nr. Mat.-No Mat.Nr.	Symbol Symbol Symbole	Festigkeit Hardness Résistance
01	1	Klinkengehäuse	Latch housing	Support mobile	1	1.2767	X45NiCrMo4	48 HRC
02	2	Steuerplatte	Control plate	Plaque support	1	1.2162	21MnCr5	~630 HV 1 <sup>1)</sup>
03	3	Zugleiste	Latch bar	Crochet	1	1.2162	21MnCr5	~630 HV 10 <sup>1)</sup>
03 L1	3-L1	Zugleiste mit Verzögerung L1 = max. 200 mm	Latch bar with delay L1 = max. 200 mm	Crochet de traction à retardement L1 = max. 200 mm	1	1.2162	21MnCr5	~630 HV 10 <sup>1)</sup>
05	5	Sperre / DLC	Catch stop / DLC	Verrou / DLC	1	1.2767	X45NiCrMo4	54 HRC
06	6	Raste / DLC	Catch / DLC	Clavette / DLC	2	1.2767	X45NiCrMo4	54 HRC
061	61	Senkschraube	Countersunk screw	Vis à tête fraisée	2			
07	7	Druckfeder	Spring	Ressort de pression du verrou	4			
10	10	Ausstoßerleiste	Reverse latch bar	Poussoir	1	1.2162	C45W3	~630 HV 10 <sup>1)</sup>

<sup>1)</sup> Einsatzhärtetiefe (Eht)  
Thickness of hardened layer = 0,4 - 0,6 mm  
Épaisseur de la couche durcie

Lieferumfang  
Scope of delivery  
Contenu de la livraison

Z4-40-0	Z4-40-L1	Z4-42
01	01	01
02	02	02
03	03-L1	
05	05	
06 + 061	06 + 061	06 + 061
07	07	
		10

**Achtung!**  
Bei einer Ersatzbestellung der Positionen 2, 3, 3-L1 und 10 erfolgt eine Lieferung ohne Befestigungsbohrungen.

**Warning!**  
If items 2, 3, 3-L1 or 10 are ordered as spare parts, they will be supplied without fixing holes.

**Attention!**  
À la commande de pièces de rechange pour les réf. 2, 3, 3-L1 et 10 la livraison sera effectuée sans alésages de fixation.