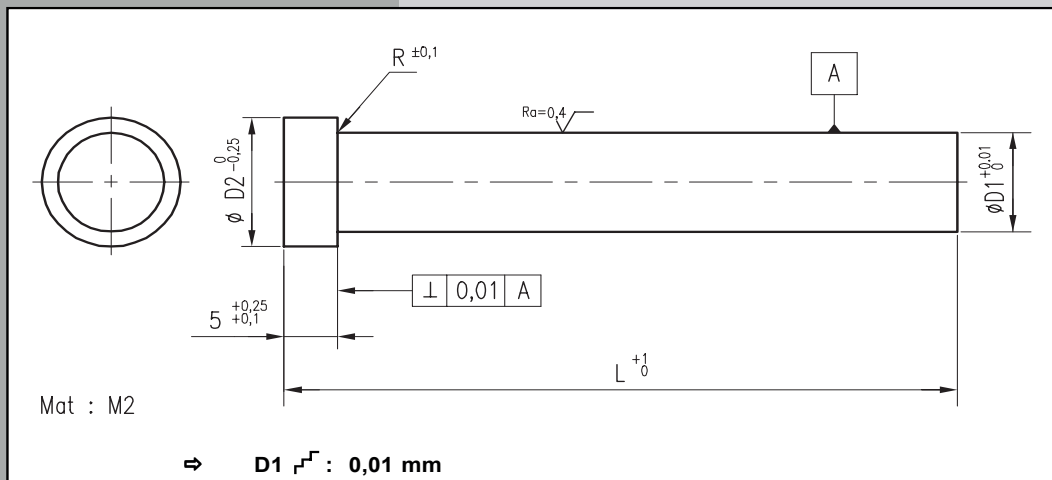


MTX

CAT NO. 403

POINÇON DROIT SERIE MTX  
SCHNEIDSTEMPEL ABGESETZT MTX  
PUNZÓN MTX

HEAD TYPE PUNCH MTX SERIES  
PUNZONE TONDO SBOSSATO VERSATILE MTX  
PUNÇÃO MTX



Qty=6 Cat. No. : MTX D1=13,7 L=90 Mat. : M2 → 6 - MTX -13,7 - 90 M2

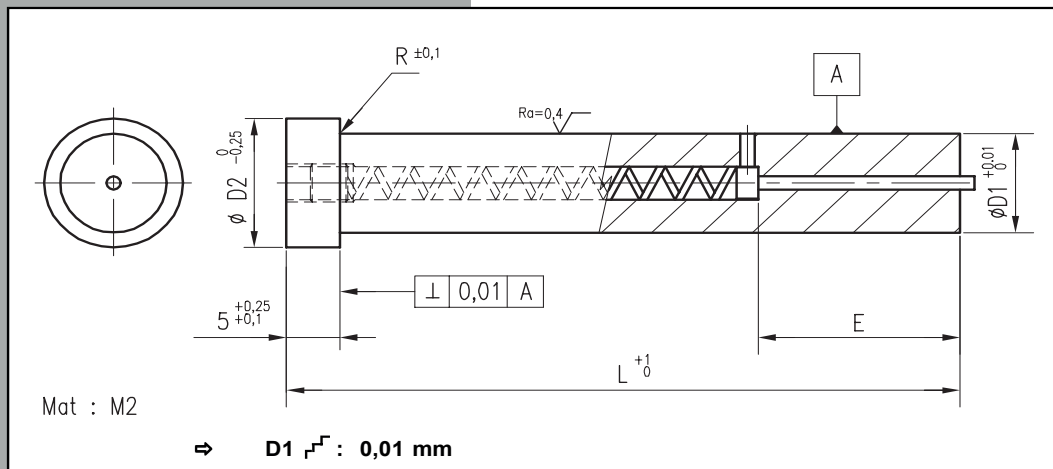
D1	5.00 - 6.00	6.01 - 8.00	8.01 - 10.00	10.01 - 13.00	13.01 - 16.00	16.01 - 20.01	20.01 - 25.00
D2	9	11	13	16	19	23	28
D1 \ L	5.00 - 6.00	6.01 - 8.00	8.01 - 10.00	10.01 - 13.00	13.01 - 16.00	16.01 - 20.01	20.01 - 25.00
50							
56							
63							
71							
80							
90							
100							

MEX

CAT NO. 403

POINÇON DROIT AVEC EJECTEUR SERIE MEX  
SCHNEIDSTEMPEL ABGESETZT, ROHLING, MEX  
PUNZÓN CON EXPULSOR MEX

HEAD TYPE EJECTOR PUNCH MEX SERIES  
PUNZONE TONDO SBOSSATO CON ESPULSORE MEX  
PUNÇÃO MEX COM EJECTOR



Qty=6 Cat. No. : MEX D1=13,7 L=90 Mat. : M2 → 6 - MEX -13,7 - 90 M2

D1	5.00 - 6.00	6.01 - 8.00	8.01 - 10.00	10.01 - 13.00	13.01 - 16.00	16.01 - 20.01	20.01 - 25.00
D2	9	11	13	16	19	23	28
E	25,4	25,4	38,1	38,1	38,1	38,1	38,1
L / D1	5.00 - 6.00	6.01 - 8.00	8.01 - 10.00	10.01 - 13.00	13.01 - 16.00	16.01 - 20.01	20.01 - 25.00
50							
56							
63							
71							
80							
90							
100							

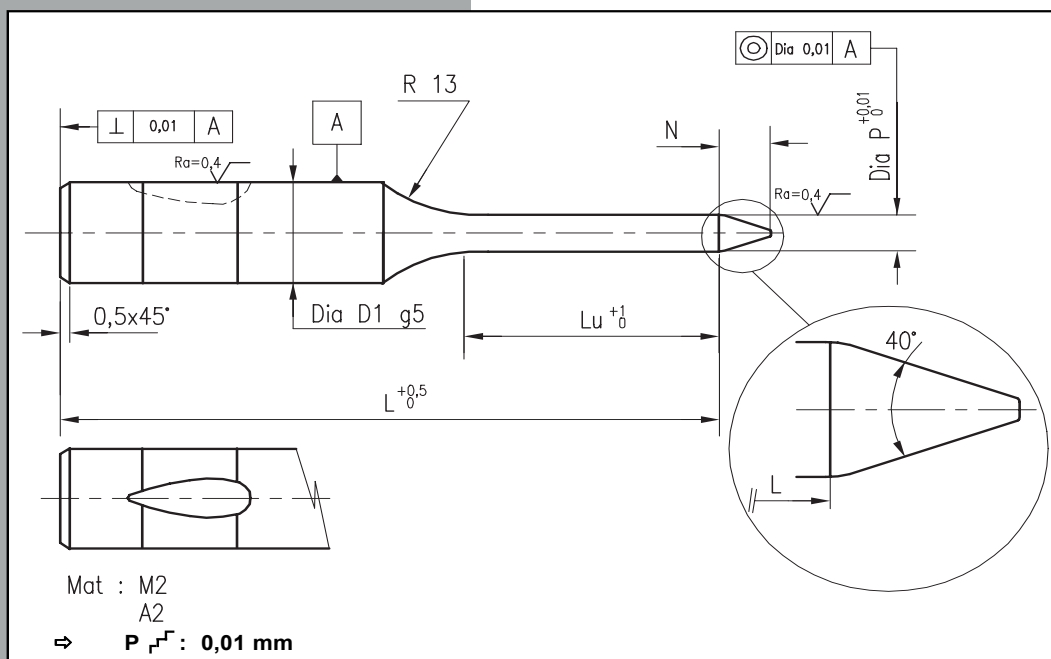
**MBLA**

ISO 10071

POINÇON PILOTE A RETENUE A BILLE SERIE MBLA  
SCHNELLWECHSEL-SUCHSTIFT SERIE MBLA  
PUNZONES PILOTO LAGRIMA MBLA

**CAT NO. 403**

BALL LOCK LIGHT DUTY PILOT MBLA SERIES  
PUNZONE AD ATTACO RAPIDO CARICO LEGGERO PILOTA MBLA  
PUNÇÃO PILOTO MBLA C/ POSIÇÃO ESFERA



Qty=6 Cat. No. : MBLA D1=10 L=71 P=8,2 Mat. : A2 → 6 - MBLA - 10 - 71 - 8,2 - A2

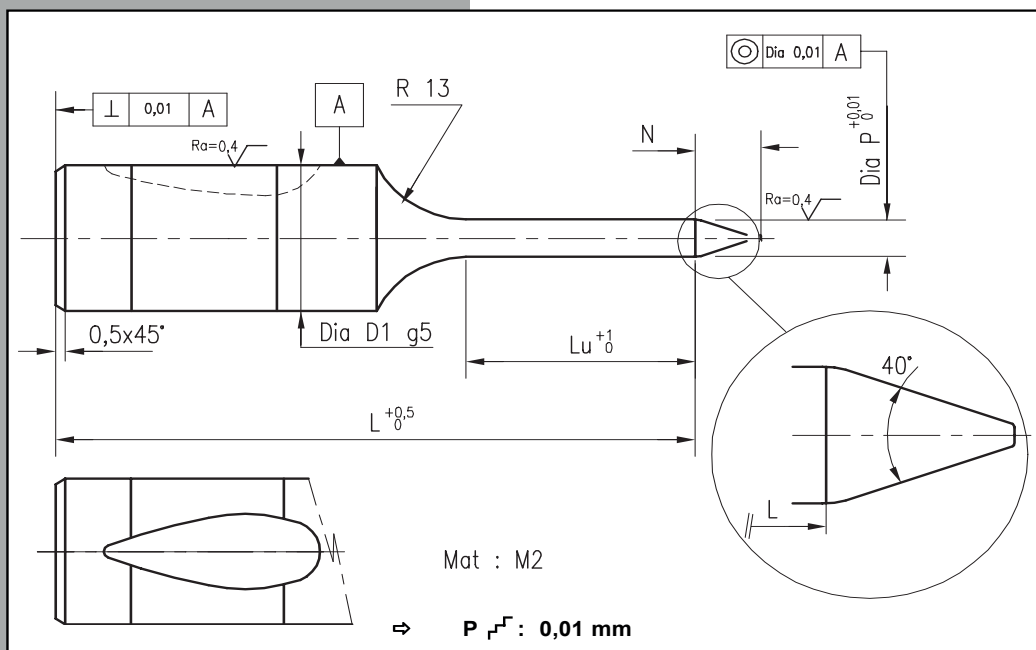
D1	10	13	16	20	25	32	38
Lu	19	19	19	19	19	19	30
N	8	10	15	20	25	30	35
D1	10	13	16	20	25	32	38
L \ P min-max	5,9 - 9,98	9,9 - 12,98	12,9 - 15,98	15,9 - 19,98	19,9 - 24,98	24,9 - 31,98	31,9 - 37,98
71	M2						
	A2						
80	M2						
	A2						
90	M2						
	A2						
100	M2						
	A2						
110	M2						
	A2						
125	M2						
	A2						

**MBHA**

**CAT NO. 403**

POINÇON PILOTE A RETENUE A BILLE SERIE MBHA  
SCHNELLWECHSEL-SUCHSTIFT SERIE MBHA  
PUNZON PILOTO LAGRIMA MBHA

BALL LOCK HEAVY DUTY PILOT MBHA SERIES  
PUNZONE AD ATTACCO RAPIDO CARICO FORTE PILOTA MBHA  
PUNÇÃO PILOTO MBHA C/ POSIÇÃO ESFERA



Qty=6 Cat. No. : MBHA D1=20 L=80 P=16,2 Mat. : A2 → 6 - MBHA - 20 - 80 - 16,2 - A2

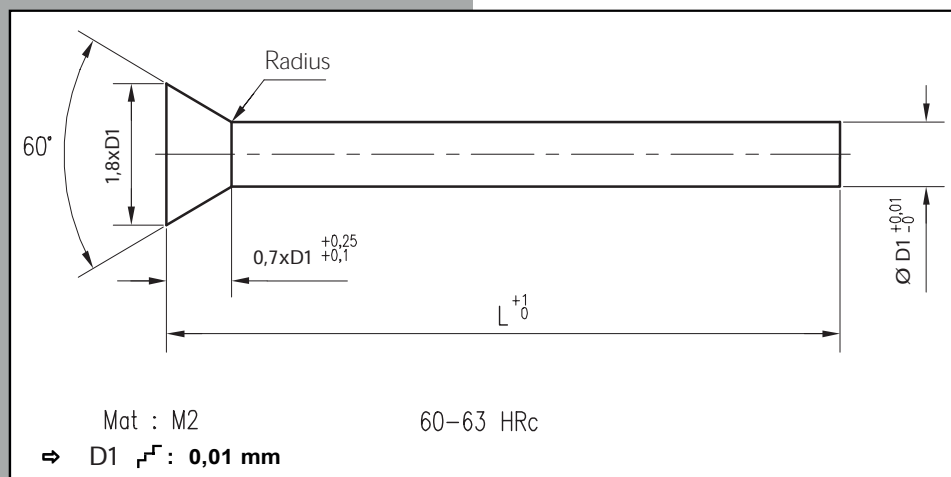
D1	10	13	16	20	25	32	38
Lu	19	19	25	25	25	25	30
N	8	10	15	20	25	30	35
D1	10	13	16	20	25	32	38
<b>P min-max</b>	<b>5,9 - 9,98</b>	<b>9,9 - 12,98</b>	<b>12,9 - 15,98</b>	<b>15,9 - 19,98</b>	<b>19,9 - 24,98</b>	<b>24,9 - 31,98</b>	<b>31,9 - 37,98</b>
<b>L</b>							
71	M2						
80	M2						
90	M2						
100	M2						
110	M2						
125	M2						

## MCSA

CAT NO. 403

POINÇON DROIT A TETE CONIQUE, ENCOMBREMENT REDUIT - MCSA  
 SCHNEIDSTEMPEL, SENKKOPF - MCSA  
 PUNZON CABEZA CONICA - MCSA

CLOSE SPACE BEVEL HEAD PUNCH MCSA SERIES  
 PUNZONE TONDO TESTA SVASATA 60° - MCSA  
 PUNÇÃO CABEÇA CONICA / REDUÇÃO DE ESPAÇO - MCSA



Qty=6 Cat. No. : MCSA L=63 P=2,5 → 6 - MCSA - 63 - 2,5

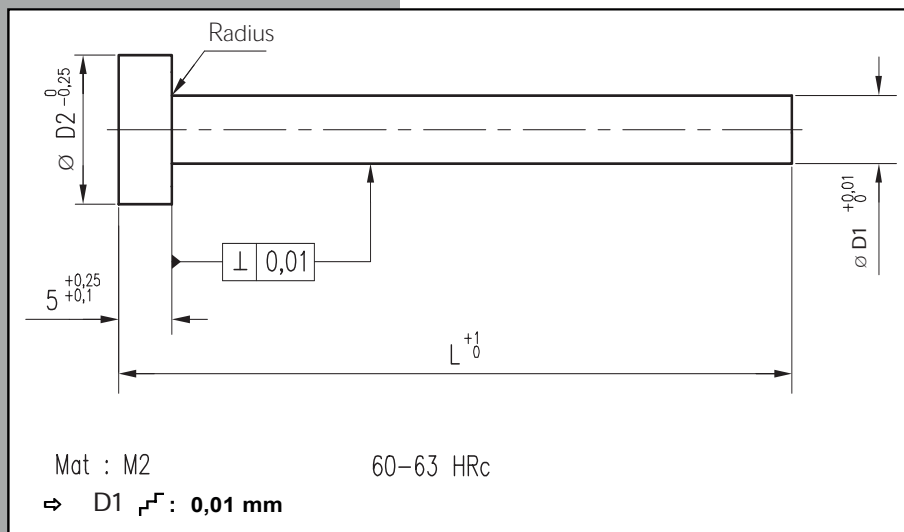
D1 min-max	0,8 - 1,6	1,7 - 2	2,1 - 3	3,1 - 4	4,1 - 5	5,1 - 6	6,1 - 7
L							
40							
50							
56							
63							

**MCSB**

**CAT NO. 403**

POINÇON DROIT A TETE CYLINDRIQUE, ENCOMBREMENT REDUIT - MCSB  
 SCHNEIDSTEMPEL, ZYLINDRISCHER KOPF - MCSB  
 PUNZON CABEZA CILINDRICA - MCSB

CLOSE SPACE CYLINDRICAL HEAD PUNCH MCSB SERIES  
 PUNZONE TONDO TESTA CILINDRICA - MCSB  
 PUNÇÃO C/CABEÇA CILINDRICA - MCSB



Qty=6 Cat. No. : MCSB L=56 P=5,1 → 6 - MCSB - 56 - 5,1

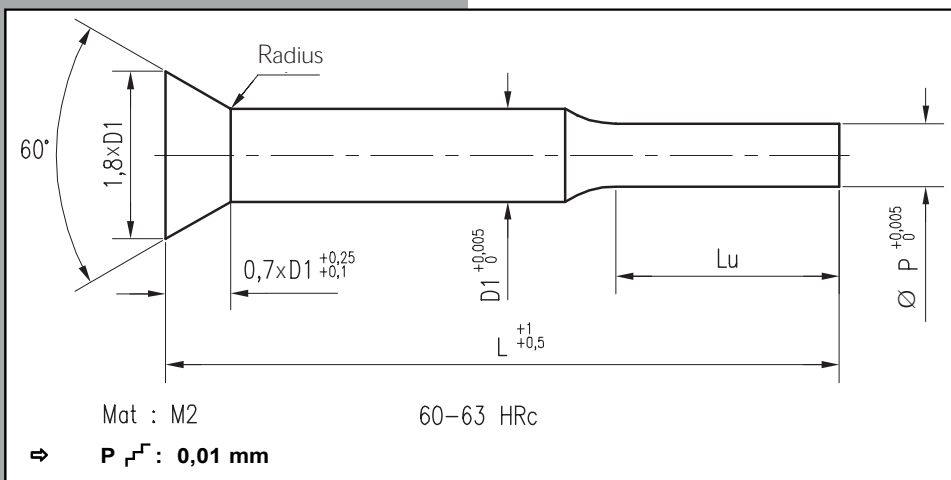
P min-max	0,8 - 1,6	1,7 - 2	2,1 - 3	3,1 - 4	4,1 - 5	5,1 - 6	6,1 - 7
D2	3	4	5	6	7	8	9
D1 min-max							
L	0,8 - 1,6	1,7 - 2	2,1 - 3	3,1 - 4	4,1 - 5	5,1 - 6	6,1 - 7
40							
50							
56							
63							

## MCSAP

### CAT NO. 403

POINÇON EPAULE A TETE CONIQUE, ENCOMBREMENT REDUIT - MCSAP  
 SCHNEIDSTEMPEL, KEGELIGER KOPF - MCSAP  
 PUNZON CABEZA CONICA MECHADO - MCSAP

STEPPED CLOSE SPACE BEVEL HEAD PUNCH MCSAP SERIES  
 PUNZONE TONDO CON RIBASSO TESTA SVASATA - MCSAP  
 PUNÇÃO CABEÇA CONICA P/ REDUÇÃO DE ESPAÇO - MCSAP



Qty=6 Cat. No. : MCSAP D1=3 L=63 P=2,5 → 6 - MCSAP 3 - 63 - 2,5

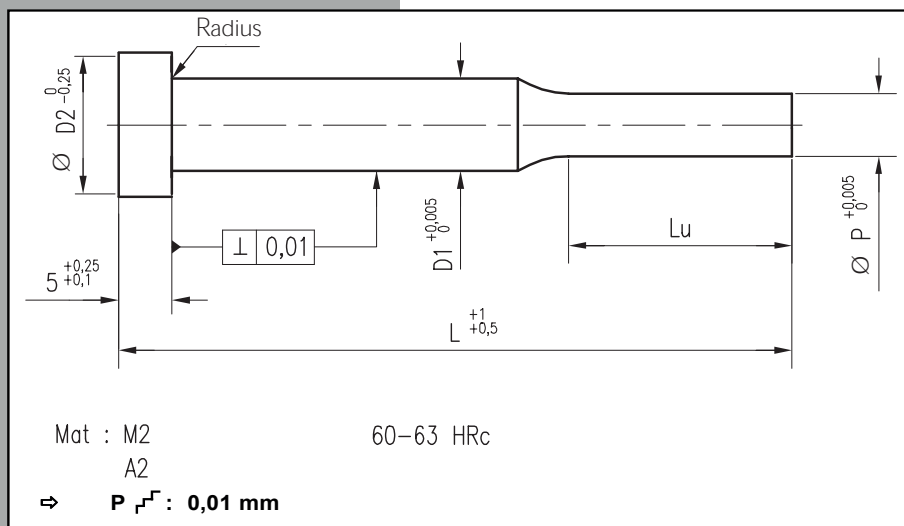
D1	2	3	4	5	6	7
Lu	5	7	8	8	8	8
D1	2	3	4	5	6	7
P min-max						
L	0,81 - 2	2,01 - 3	3,01 - 4	4,01 - 5	5,01 - 6	6,01 - 7
40						
45						
50						
56						
63						

MCSBP

CAT NO. 403

POINÇON EPAULE A TETE CYLINDRIQUE ENCOMBREMENT REDUIT - MCSBP  
SCHNEIDSTEMPEL, ZYLINDRISCHER KOPF, ABGESETZT - MCSBP  
PUNZON CABEZA CILINDRICA MECHADO - MCSBP

STEPPED CLOSE SPACE CYLINDRICAL HEAD PUNCH MCSBP SERIES  
PUNZONE TONDO CON RIBASSO TESTA CILINDRICA - MCSBP  
PUNÇÃO CABEÇA CILINDRICA P/ REDUÇÃO DE ESPAÇO - MCSBP



Qty=6 Cat. No. : MCSBP D1=7 L=50 P=6,5 → 6 - MCSBP7 - 50 - 6,5 - A2

D1	2	3	4	5	6	7	
D2	4	5	6	7	8	9	
Lu	5	7	8	8	8	8	
D1	2	3	4	5	6	7	
L	P min-max	0,81 - 2	2,01 - 3	3,01 - 4	4,01 - 5	5,01 - 6	6,01 - 7
40	M2						
	A2						
45	M2						
	A2						
50	M2						
	A2						
56	M2						
	A2						
63	M2						
	A2						

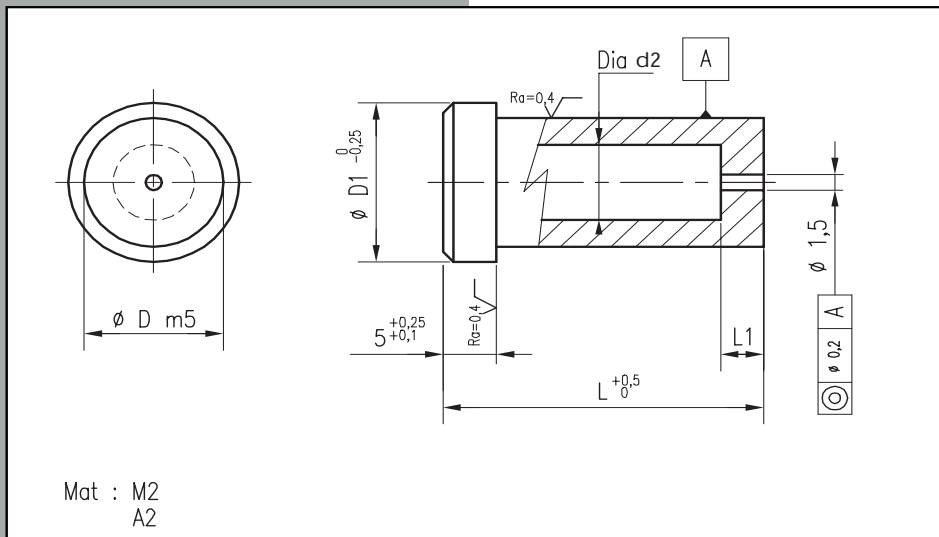


MHW

CAT NO. 403

MATRICE EBAUCHE A COLLERETTE SERIE MHW  
SCHNEIDBUCHSE MIT BUND, ROHLING, SERIE MHW  
CASQUILLO CON VALONA MHW

HEAD TYPE DIE BUTTON BLANK MHW SERIES  
MATRICE CON COLLARE CILINDRICA SBOSSATA MHW  
MATRIZE MHW C/ CABEÇA P/ DESBASTE



Qty=6 Cat. No. : MHW D=13 L=25 MAT: A2 → 6 - MHW - 13 - 25 - A2

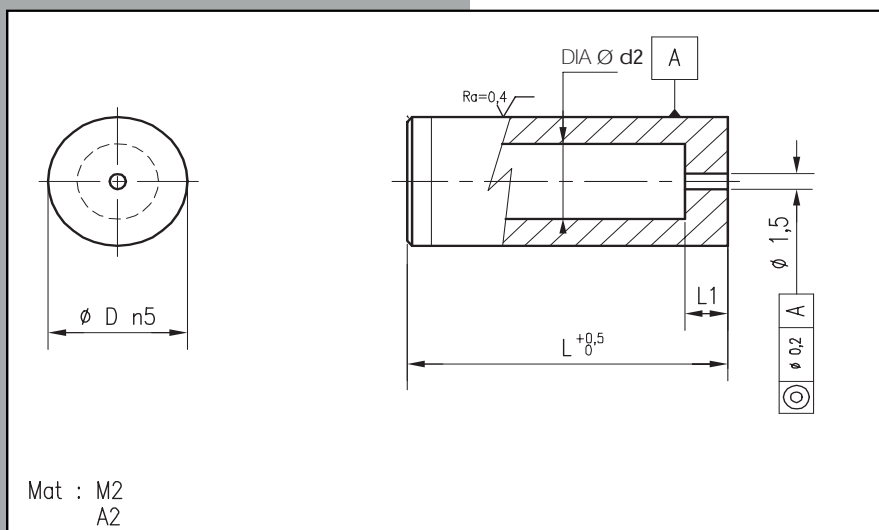
D	5	6	8	10	13	16	20	25	32	40	50
d2 max	2,8	3,5	4	5,8	8	9,5	12	17,3	20,7	27,7	37
L1	2	3	4	4	5	5	8	8	8	8	8
D1	8	9	11	13	16	19	23	28	35	43	53
L \ D	5	6	8	10	13	16	20	25	32	40	50
16	M2										
	A 2										
20	M2										
	A 2										
25	M2										
	A 2										
30	M2										
	A 2										
32	M2										
	A 2										
35	M2										
	A 2										

**MDW**

**CAT NO. 403**

MATRICE EBAUCHE LISSE SERIE MDW  
SCHNEIDBUCHSE ROHLING SERIE MDW  
CASQUILLO LISO MDW

HEADLESS DIE BUTTON BLANK MDW SERIES  
MATRICE LISCIA CILINDRICA SBOSSATA MDW  
MATRIZ LISA MDW



Qty=6 Cat. No. : MDW D=13 L=25 Mat.: A2 → 6 - MDW - 13 - 25 - A2

D	5	6	8	10	13	16	20	25	32	40	50
D2 max	2,8	3,5	4	5,8	8	9,5	12	17,3	20,7	27,7	37
L1	2	3	4	4	5	5	8	8	8	8	8
L \ D	5	6	8	10	13	16	20	25	32	40	50
16	M2										
	A 2										
20	M2										
	A 2										
25	M2										
	A 2										
30	M2										
	A 2										
32	M2										
	A 2										
35	M2										
	A 2										