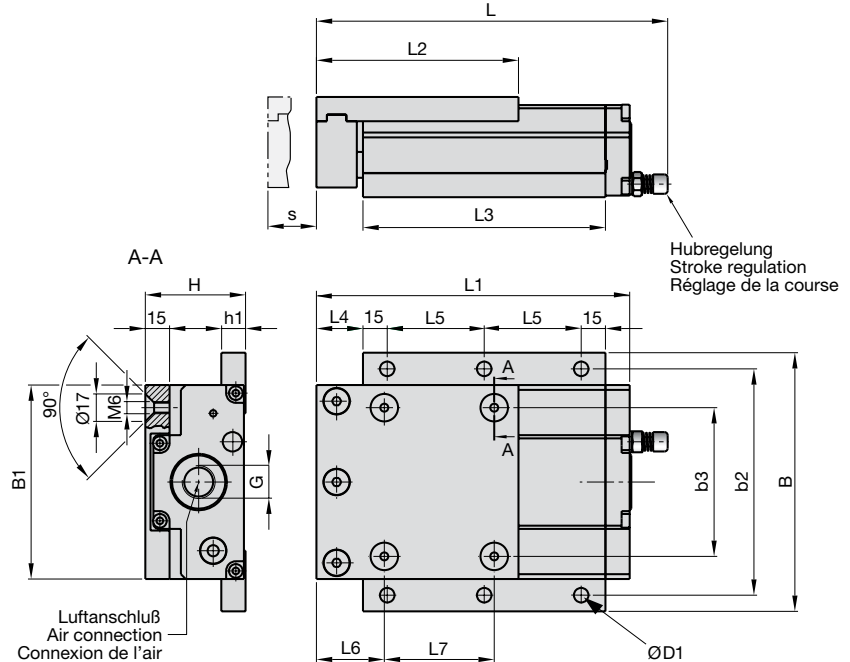


PNEUMATISCHER TEILEFÖRDERER
PNEUMATIC PART CONVEYOR
CONVOYEUR PNEUMATIQUE DES PIÈCES

Pneumatischer Teileförderer
Pneumatic part conveyor
Convoyeur pneumatique des pièces

SN 9810-

SN 9810-Type



Type	L	L1	L2	L3	L4	L5	L6	L7	B	B1	b2	b3	H	h1	G	s	D1
TG-1000	~ 211	188	100	150	23	60	30	60	125	85	105	60	40	10	R 3/8"	27	8,5
TG-1500	~ 211	188	100	150	23	60	30	60	125	85	105	60	40	10	R 3/8"	27	8,5
TG-2000	~ 218	194	125	150	29	60	42	68	160	120	140	92	62	15	R 3/8"	30	8,5
TG-3000	~ 218	194	125	150	29	60	42	68	160	120	140	92	62	15	R 1/2"	30	8,5

Type	Betriebsdruck Working pressure Pression de service [bar]	min. Schlauchquerschnitt min. hose cross section Coupe transversal du tuyau min. [Ø mm]	Luftverbrauch Air consumption Consommation d'air [l/min.]	Vorschubgeschwindigkeit Rate of feed Vitesse d'avancement [m/min.]
TG-1000	3,9 - 4,5	6	0,2 - 2,5	< 0,5 - 4
TG-1500	3,9 - 4,6	6	0,3 - 2,5	< 0,5 - 4
TG-2000	4,2 - 4,7	8	0,5 - 5	< 0,5 - 3
TG-3000	4,2 - 4,7	8	0,7 - 7	< 0,5 - 3

9

Type	max. Steigung der Transportrinne max. incline of the transport groove Inclinaison max. du conduit de transport [°]	Geräuschpegel Noise level Niveau de bruit [dB (A)]	Gewicht Weight Poids [kg]	max. Belastung mit Stütze max. load with support Charge maximale avec support [N]	max. Rinnengewicht max. groove weight Poids maximale de conduit [kg]
TG-1000	8	< 70	2,1	180	3
TG-1500	8	< 70	2,1	250	3
TG-2000	8	< 70	4,3	350	5
TG-3000	8	< 70	4,5	650	7

Pneumatischer Teileförderer

Einsatz und Verwendung

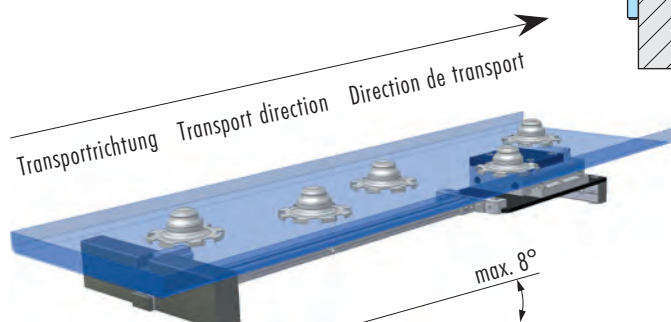
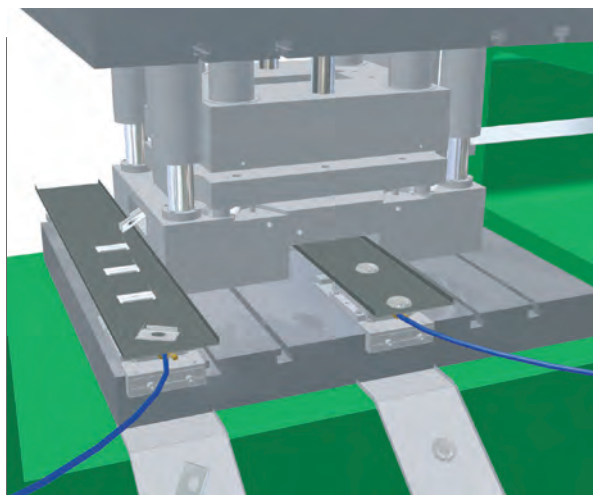
Der pneumatische Teileförderer ist ein Linearförderer, der Stanzteile aller Art und Form auch aus extrem beengten Abfallschächten herausbefördert. Die einfache Handhabung des Gerätes erlaubt einen schnellen und störungsfreien Betrieb sowohl in der Serien- als auch in der Massenfertigung. Das Gerät ist robust und wartungsarm.

Funktion

Linearförderer arbeiten nach dem Prinzip der Geschwindigkeits- und Oberflächenreibungsrelation. Dabei werden unterschiedliche Vor- und Rückbeschleunigungswerte dazu genutzt, ein Teil auf einer Blechrinne zu transportieren. Durch Einstellen der Hubfrequenz läßt sich die Transportgeschwindigkeit optimal an die Gegebenheiten vor Ort anpassen. Die Transportrinne läßt sich individuell ausgestalten und hoher Bandverschleiß durch scharfe Butzenteile wird vermieden. Geölte Stanzteile lassen sich optimal auf strukturiertem Transportblech abführen.

Einbau

Die Geräte arbeiten mit geölter Druckluft, die mittels Wartungseinheit und Öl bereitgestellt wird. Der Regelbereich der Hubfrequenz liegt, abhängig vom Gerätetyp, zwischen 10-180 Hüben/Minute. Schwingungen der Transportrinne sind durch Rinnenabstützungen zu sichern. Die Transportgeschwindigkeit läßt sich durch eine leichte Neigung der Transportrinne erhöhen.



Pneumatic part conveyor

Application and using

This pneumatic part conveyor is a linear conveyor, which transports stampings of all kind and form also out of extremely narrowed waste disposers. The simple handling of the conveyors allows a rapid and trouble free operation as well in the series as in the large quantity production. The conveyor is robust and needs low-maintenance.

Function

Linear conveyors work according the principle of the relation between the velocity and the frictional resistance. Thereby different front- or back acceleration values are used to transport a part on a groove out of sheet steel. By adjusting the stroke frequency the transport velocity can optimally be accommodated to the conditions on the spot. The transport groove can be arranged individually and a high wear of the conveyor band is avoided. Stampings which are fouled by oil can optionally be carried away on a corrugated transportation sheet steel.

Assembly

The conveyors work with oiled air pressure which is supplied by means of the maintenance unit and the oiler. The range of adjustment of the stroke frequency lies, depending on the type of the conveyor, between 10-180 strokes/minute. The vibrations of the transport groove have to be secured by groove supports. The transport velocity can be increased by a slight incline of the transport groove.

Convoyeur pneumatique des pièces

Mise en oeuvre et utilisation

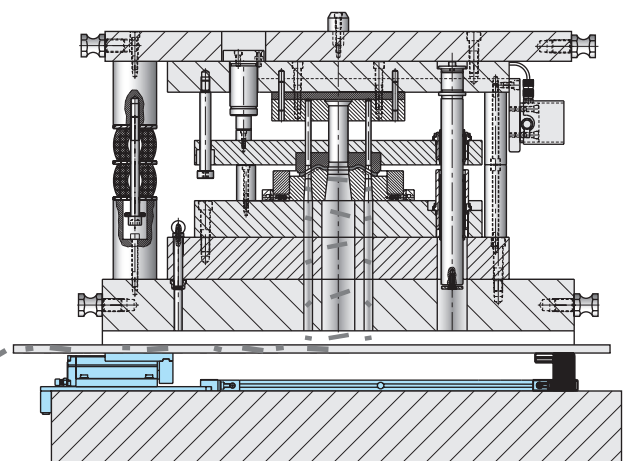
Ce convoyeur pneumatique des pièces est un convoyeur linéaire qui transporte les pièces fabriquées à la presse aussi au dehors de puisards extrêmement étroits. Le maniement facile des convoyeurs permette un fonctionnement rapide et sans défaut non seulement dans la production de série mais encore dans la production de masse. Le convoyeur est robuste et pratiquement sans entretien.

Fonctionnement

Les convoyeurs linéaires marchent selon le principe de la relation entre la vitesse et le frottement superficiel. Ici les valeurs de pré accélération et d'accélération en retour sont utilisées pour transporter une pièce sur un conduit de tôle. Au moyen de l'ajustage de la fréquence de la course, la vitesse du transport peut être accommodée optimalement aux conditions sur place. Le conduit de transport peut être formé individuellement et une usure élevée de la bande transporteuse est évitée. Pièces fabriquées à la presse salies par l'huile peuvent être emmenées optimalement sur une tôle de transport cannelée.

Montage

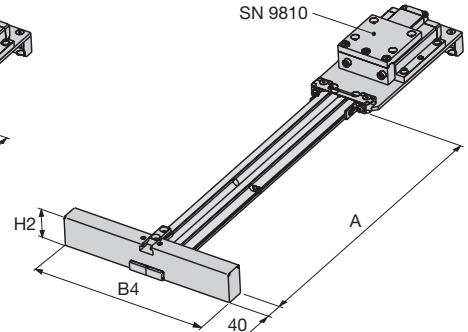
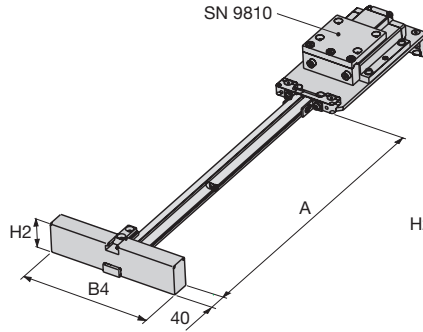
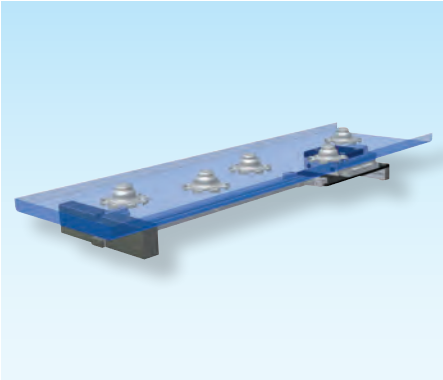
Les convoyeurs travaillent avec l'air comprimé qui est huilé et qui est mise à disposition au moyen de l'unité d'entretien et du huileur. Le domaine de réglage de la fréquence de la course se trouve entre 10-180 course/minute dépendant du type de convoyeur. Les vibrations du conduit de transport doivent être protégées par des supports de conduit. La vitesse de transport peut être élevée par une inclinaison légère du conduit de transport.



**Rinnenabstützung
zu SN 9810**

**Groove support
for SN 9810**

**Support de conduit
pour SN 9810**



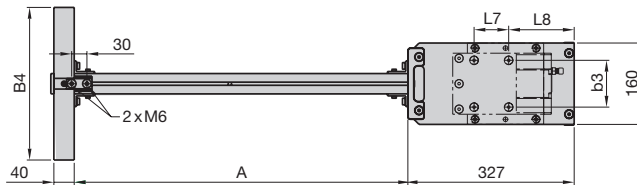
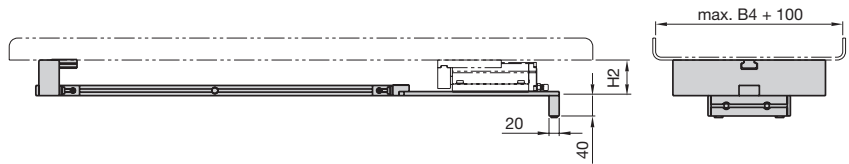
SN 9820-

SN 9820-Type-
A-B4



SN 9820-TG 90-... / TG 91-...

SN 9820-TG 92-...



Type	A	B4	H2	L7	L8	b3	für / for/ pour SN 9810
TG 90	700	160	48	60	148	60	TG-1000 / TG-1500
	700	200	48	60	148	60	
	700	300	48	60	148	60	
	1000	160	48	60	148	60	
	1000	200	48	60	148	60	
	1000	300	48	60	148	60	
TG 91	700	160	70	68	134	92	TG-2000 / TG-3000
	700	300	70	68	134	92	
	700	500	70	68	134	92	
	1000	160	70	68	134	92	
	1000	300	70	68	134	92	
	1000	500	70	68	134	92	
TG 92	700	300	70	68	134	92	
	700	400	70	68	134	92	
	700	500	70	68	134	92	
	1000	300	70	68	134	92	
	1000	400	70	68	134	92	
	1000	500	70	68	134	92	

**Sonderrinnenabstützung
zu SN 9810**

**Special groove support
for SN 9810**

**Support de conduit spécial
pour SN 9810**

SN 9820



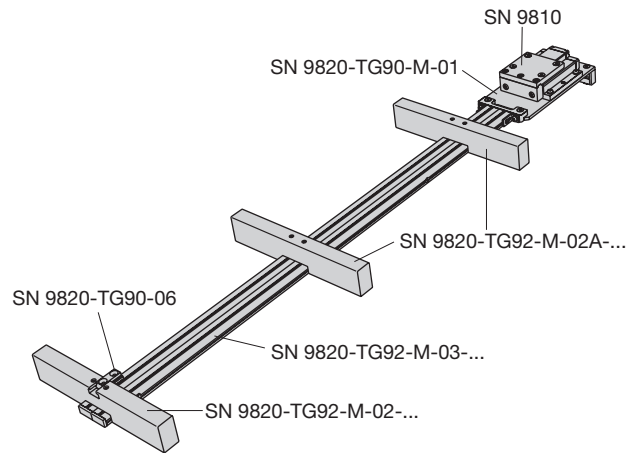
SN 9820



Sonderbauformen mit
Zusatzabstützungen **auf Anfrage**

Special execution with
additional supports **on request**

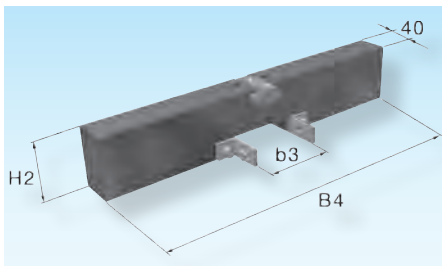
Type spécial avec sup-
ports supplémentaires **sur demande**



Abstützung zu SN 9820

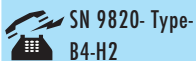
Support for SN 9820

Support pour SN 9820



SN 9820-

Mat.: PTFE



SN 9820- Type-
B4-H2

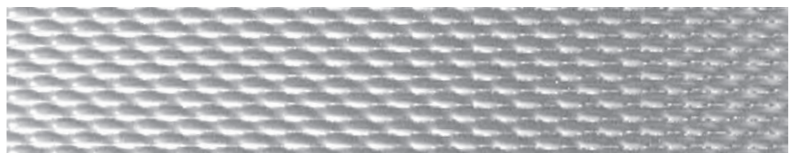
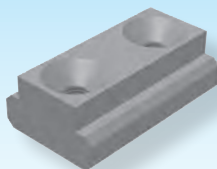


Type	B4	H2	b3
TG 90 - M - 02	160	48	40
	200	48	40
	300	48	40
TG 91 - M - 02	160	70	40
	300	70	40
	500	70	40
TG 92 - M - 02	300	70	80
	400	70	80
	500	70	80

T-Nutenstein zu SN 9820

T-nut for SN 9820

Écrou en T pour SN 9820



SN 9820-

Mat.: Al



SN 9820-
TG90-06



Für **Transportrinnen** emp-
fehlen wir, vor allem bei stark
öligen /gefetteten Teilen, die
Verwendung von Strukturblech
aus 1.4301 vom Typ SM-5WL.

For the **transport grooves**
we recommend, particularly
for badly oiled /greased parts,
the using of structured sheet
steel of the type SM-5WL
(1.4301).

Pour des **conduits de trans-
port** nous recommandons,
particulièrement pour des
pièces huileuses /graissées,
l'utilisation d'une tôle structu-
rée du type SM-5WL (1.4301).

global conveying solutions for the metal stamping industry

1000

The **Shuttle Pro 1000** is the perfect fit for heavy duty scrap handling applications. Capable of carrying single or multiple trays, this shaker has an unbeatable price to performance ratio.

Shuttle Pro Conveyors make removing scrap from your press more economical than ever.



Shuttle Pro Conveyors are:

- Manufactured to ISO 9001:2008 Standards
- Fully Warranted
- Heavy Duty Steel Construction
- Universally Adaptable
- Made in the USA
- 100% Oil-Less & Seal-Less

a world class
product
 a world class
price

Operating Pressure	0 to 80 PSI 0 to 5.5 Bar
Air Consumption	4 CFM 113.3 Liter/Min
Air Requirements	Dry Filtered Air
Operating Temperature	0 to 120 Fahrenheit -18 to 49 Celsius
Push Force	1000 LB @ 80 PSI 453.59 KG @ 5.5 Bar
Tray Weight Capacity	250 LB 113.4 KG
Part Load Capacity	500 LB 226.8 KG
Maximum Cross Bar Length	144.00 Inches 365.76 Centimeters
Drive Height	8.00 Inches 20.32 Centimeters
Drive Width	17.00 Inches 43.18 Centimeters
Drive Length	13.00 Inches 33.02 Centimeters
Drive Weight	78 LB 35.38 KG

450

global conveying solutions for the metal stamping industry



The **Shuttle Pro 450** is the perfect fit for medium duty scrap handling applications. Capable of carrying single or multiple trays, this shaker has an unbeatable price to performance ratio.

Shuttle Pro Conveyors make removing scrap from your press more economical than ever.

Shuttle Pro Conveyors are:

- Manufactured to ISO 9001:2008 Standards
- Fully Warranted
- Heavy Duty Steel Construction
- Universally Adaptable
- Made in the USA
- 100% Oil-Less & Seal-Less

a world class
product
 a world class
price

Operating Pressure	0 to 80 PSI 0 to 5.5 Bar
Air Consumption	1.5 CFM 42.5 Liter/Min
Air Requirements	Dry Filtered Air
Operating Temperature	0 to 120 Fahrenheit -18 to 49 Celsius
Push Force	450 LB @ 80 PSI 204 KG @ 5.5 Bar
Tray Weight Capacity	112.5 LB 51.03 KG
Part Load Capacity	225 LB 102.06 KG
Maximum Cross Bar Length	96.00 Inches 243.84 Centimeters
Drive Height	7.00 Inches 17.78 Centimeters
Drive Width	14.00 Inches 35.56 Centimeters
Drive Length	13.00 Inches 33.02 Centimeters
Drive Weight	58 LB 26.31 KG

global conveying solutions for the metal stamping industry

150

The **Shuttle Pro 150** is the perfect fit for light duty scrap handling applications. Capable of carrying single or multiple trays, this shaker has an unbeatable price to performance ratio.

Shuttle Pro Conveyors make removing scrap from your press more economical than ever.



Shuttle Pro Conveyors are:

- Manufactured to ISO 9001:2008 Standards
- Fully Warranted
- Heavy Duty Steel Construction
- Universally Adaptable
- Made in the USA
- 100% Oil-Less & Seal-Less

a world class
product
 a world class
price

Operating Pressure	0 to 80 PSI 0 to 5.5 Bar
Air Consumption	0.5 CFM 14.2 Liter/Min
Air Requirements	Dry Filtered Air
Operating Temperature	0 to 120 Fahrenheit -18 to 49 Celsius
Push Force	150 LB @ 80 PSI 68.03 KG @ 5.5 Bar
Tray Weight Capacity	37.5 LB 17.01 KG
Part Load Capacity	75 LB 34.02 KG
Maximum Cross Bar Length	48.00 Inches 121.92 Centimeters
Drive Height	6.00 Inches 15.24 Centimeters
Drive Width	11.00 Inches 27.94 Centimeters
Drive Length	11.00 Inches 27.94 Centimeters
Drive Weight	38 LB 17.24 KG

100

global conveying solutions for the metal stamping industry



The **Shuttle Pro 100** is the perfect fit for single tray scrap handling applications. Easily mounted wherever you need it, this shaker has an unbeatable price to performance ratio.

Shuttle Pro Conveyors make removing scrap from your press more economical than ever.

Shuttle Pro Conveyors are:

- Manufactured to ISO 9001:2008 Standards
- Fully Warranted
- Heavy Duty Steel Construction
- Universally Adaptable
- Made in the USA
- 100% Oil-Less & Seal-Less

a world class
product
 a world class
price

Operating Pressure	0 to 80 PSI 0 to 5.5 Bar
Air Consumption	0.25 CFM 7.08 Liter/Min
Air Requirements	Dry Filtered Air
Operating Temperature	0 to 120 Fahrenheit -18 to 49 Celsius
Push Force	100 LB @ 80 PSI 45.36 KG @ 5.5 Bar
Tray Weight Capacity (Centered Load)	25 LB 11.34 KG
Part Weight Capacity (Centered Load)	50 LB 22.68 KG
Maximum Cross Bar Length	24.00 Inches 60.96 Centimeters
Drive Height	4.00 Inches 10.16 Centimeters
Drive Width	7.00 Inches 17.78 Centimeters
Drive Length	8.00 Inches 20.32 Centimeters
Drive Weight	26 LB 11.79 KG

DRIVE ACCESSORIES

Compliment your Shuttle Pro Conveyor drive with our economical accessories.

Accessory components are available for the Shuttle Pro 100, 150, 450 and 1000 models.



Extruded Aluminum Cross Bar

For multiple tray applications.

Standard

P/N: SP-SEACB
1.5" x 3" bar
\$22.00 per / ft

Metric

P/N: SP-MEACB
40mm x 80mm bar
\$22.00 per / 30 cm

Universal Cross Bar Support Set

Fits standard or metric extruded aluminum cross bars. Sold as a pair.

P/N: SP-UCBS
\$440.00

Universal T-Slot Mount

The Universal T-Slot Mount attaches your Shuttle Pro to any metal stamping press bolster with T-Slots.

For Shuttle Pro 100
P/N: SP100-UTSM
\$125.00

For Shuttle Pro 150
P/N: SP150-UTSM
\$225.00

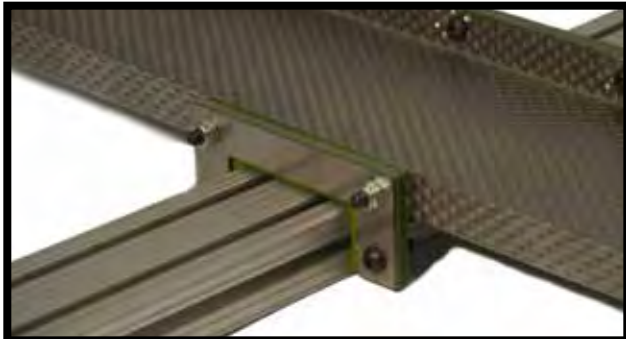
For Shuttle Pro 450
P/N: SP450-UTSM
\$250.00

For Shuttle Pro 1000
P/N: SP1000-UTSM
\$275.00

a world class
product
a world class
price

TRAY ACCESSORIES

Compliment your Shuttle Pro Conveyor drive with our economical accessories.



Tray Mount Kits

For mounting Tray to Extruded Aluminum Cross bar. Includes Mounting Hardware.

Standard

P/N: SP-STMK
Fits 1.5" x 3" bar
\$33.00

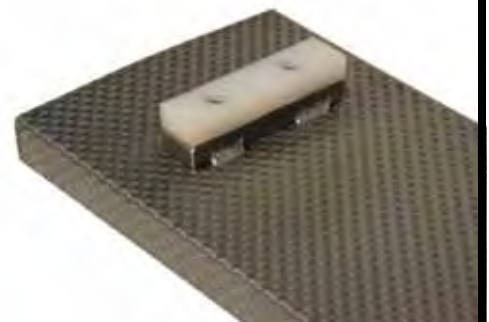
Metric

P/N SP-MTMK
Fits 40mm x 80mm bar
\$33.00



16GA Rigidized Steel Conveyor Trays

Standard sizes available at economical prices.



Tray Wear Pads

Prevents Tray Wear Issues. Assembly includes steel plate and wear pad. Requires Welding. Available in two sizes.

4" (10.16 cm) length

P/N: SP-TWP1
\$22.00

8" (20.32 cm) length

P/N: SP-TWP2
\$27.50

a world class
product
a world class
price



Extruded Aluminum Cross Bar

For multiple tray applications.

Standard
P/N: SP-SEACB
1.5" X 3" Bar

Metric
P/N: SP-MEACB
40mm X 80 mm Bar

Universal Cross Bar Support Set

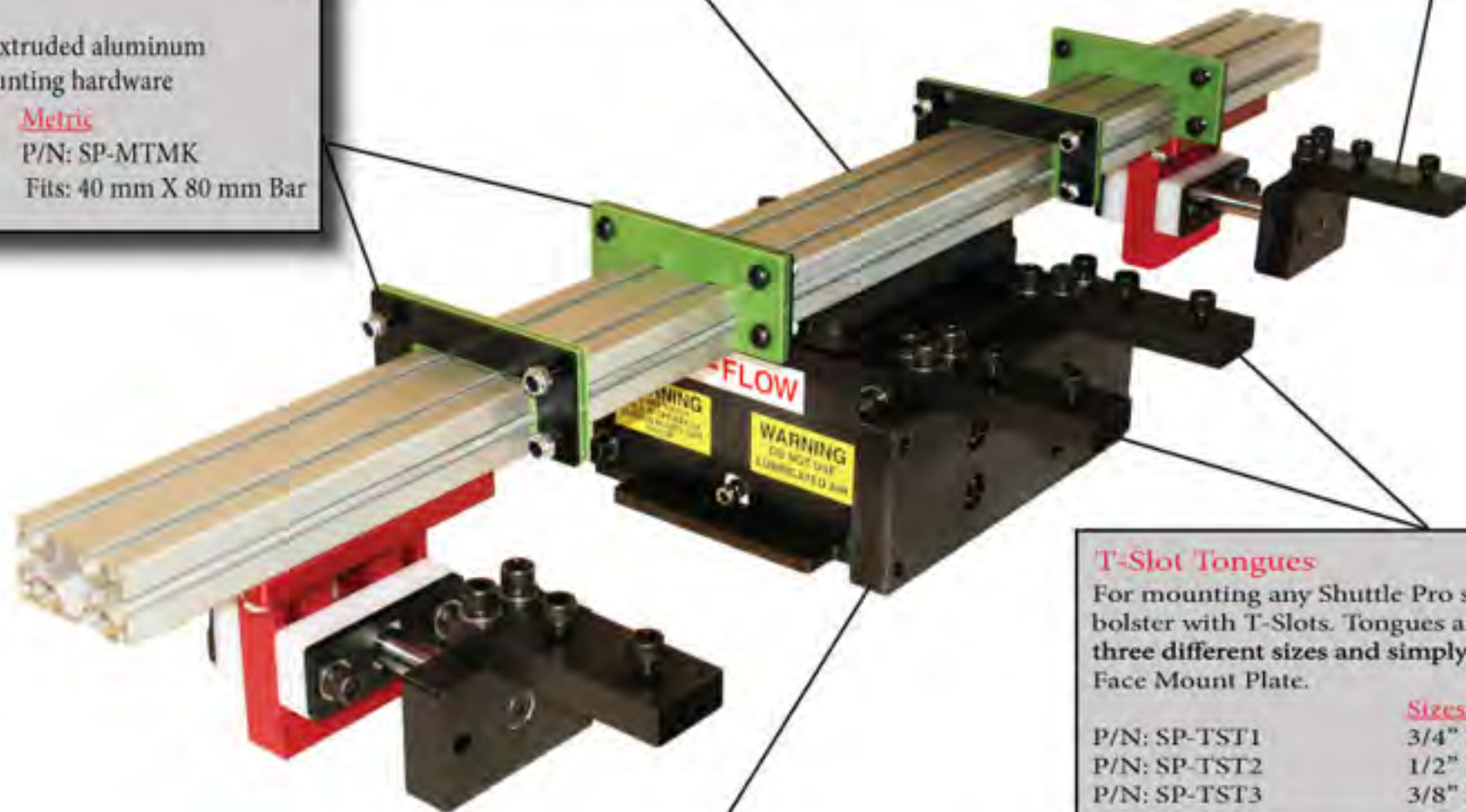
Fits standard or metric extruded aluminum cross bars. Sold as a pair.
P/N: SP-UCBS

Tray Mount Kits

For mounting tray to extruded aluminum cross bar. Includes mounting hardware

Standard
P/N: SP-STMK
Fits: 1.5" X 3" Bar

Metric
P/N: SP-MTMK
Fits: 40 mm X 80 mm Bar



T-Slot Tongues

For mounting any Shuttle Pro shaker to a bolster with T-Slots. Tongues are available in three different sizes and simply attach to the Face Mount Plate.

Sizes Available

P/N: SP-TST1	3/4" X 1-3/4"
P/N: SP-TST2	1/2" X 1-1/2"
P/N: SP-TST3	3/8" X 1-1/4"

Face Mount Plate

This plate is capable of attaching to either end of your Shuttle Pro Shaker and allows for mounting to perpendicular surfaces. It also allows for mounting optional T-Slot Tongues.

For Shuttle Pro 250

P/N: SP250-FMP

For Shuttle Pro 500

P/N: SP500-FMP

For Shuttle Pro 1000

P/N: SP1000-FMP

Tray Wear Pads

Simply stitch weld the 2 piece assembly to the underside of your tray to prevent wear issues. Available in two sizes.

Sizes Available

P/N: SP-TWP1	1" X 1" X 4" length
P/N: SP-TWP2	1" X 1" X 8" length



16GA Rigidized Steel Conveyor Trays

Standard sizes available at economical prices.