



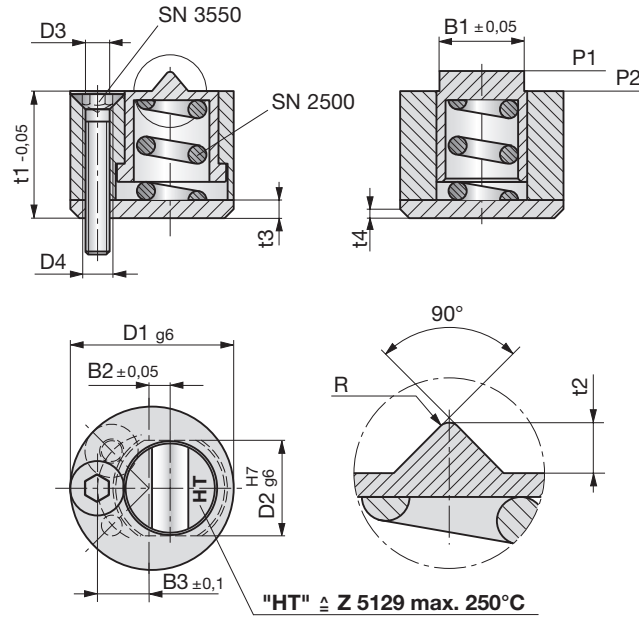
**SCHIEBERHALTEVORRICHTUNGEN**  
**SLIDE HOLDING DEVICES**  
**VERROUS DE TIROIRS**



Schieberhaltevorrichtungen

Slide holding devices

Verrous de tiroirs



Z 5129-  
Z 5130-

Mat.: 1.2767/  
~52HRC

Z 5129-D1  
Z 5130-D1

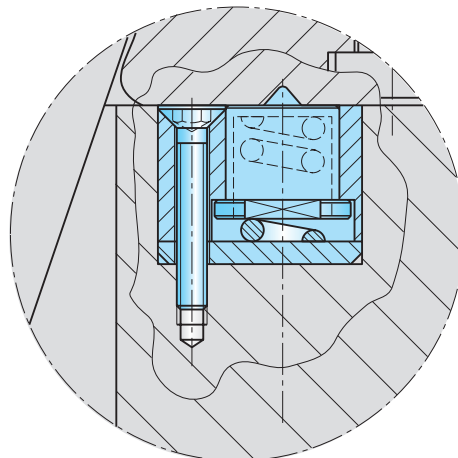


5

Z 5129 max. 250 °C

Z 5130 max. 100 °C

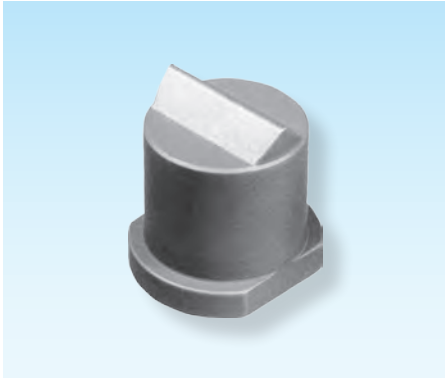
| D1 | B1   | B2  | B3  | t1 | t2  | t3  | t4   | D2 | D3  | D4 | R    | P1   | P2   | P1 (HT) | P2 (HT) | SN 2500-  | SN 3550- |
|----|------|-----|-----|----|-----|-----|------|----|-----|----|------|------|------|---------|---------|-----------|----------|
| 13 | 6,6  | 1,4 | 4,3 | 10 | 1,0 | 1,6 | 0,35 | 7  | 2,2 | M3 | 0,35 | 28 N | 34 N | 21 N    | 28 N    | 5-12      | M2-16    |
| 18 | 9,6  | 2,0 | 6,0 | 14 | 1,8 | 2,0 | 0,50 | 10 | 3,2 | M4 | 0,50 | 38 N | 42 N | 26 N    | 35 N    | 8-16,5    | M3-20    |
| 27 | 14,4 | 3,0 | 9,0 | 21 | 2,8 | 3,0 | 0,50 | 15 | 4,3 | M5 | 0,75 | 38 N | 92 N | 33 N    | 82 N    | 11,6-18,5 | M4-25    |



**Schieberhaltevorrichtungen**


**Slide holding devices**

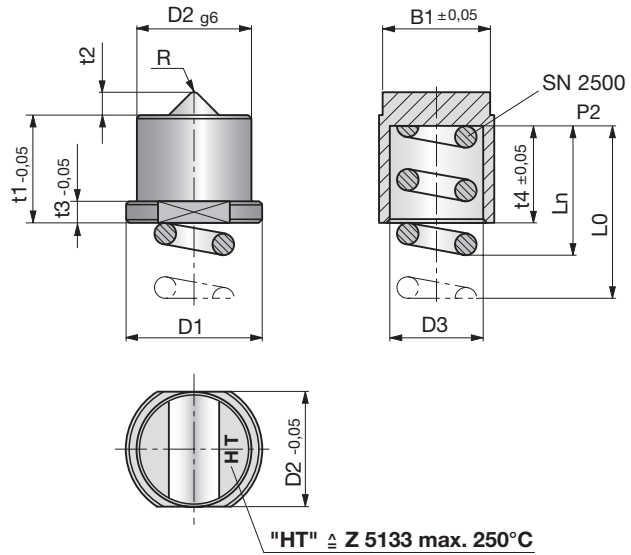
**Verrous de tiroirs**



**Z 5133-**  
**Z 5134-**

Mat.: 1.2767/  
~52HRC

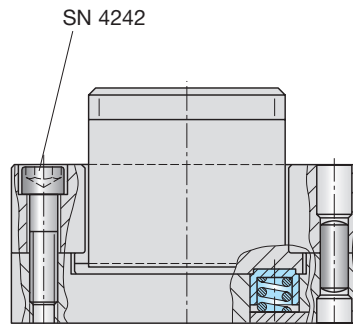
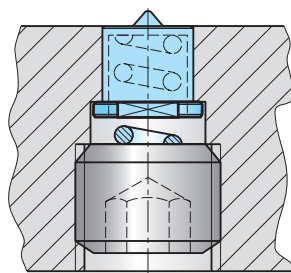
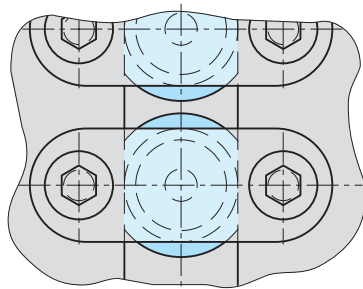
 Z 5133-D2  
Z 5134-D2



**Z 5133 max. 250 °C**

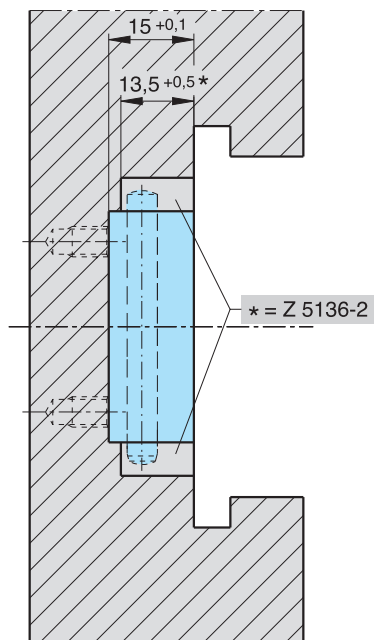
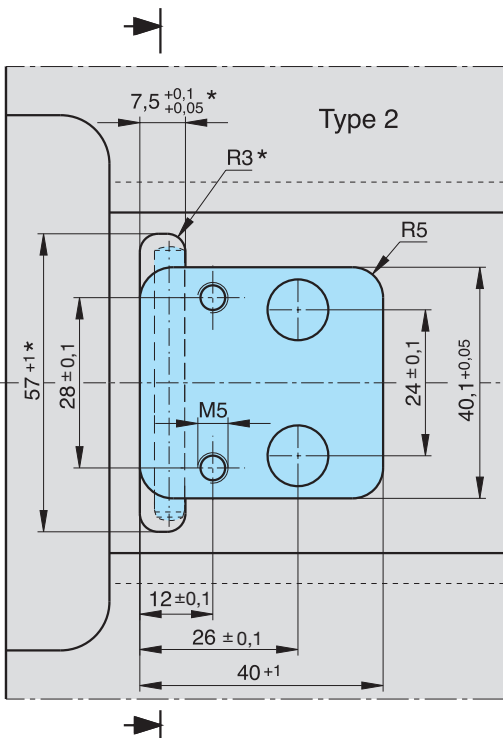
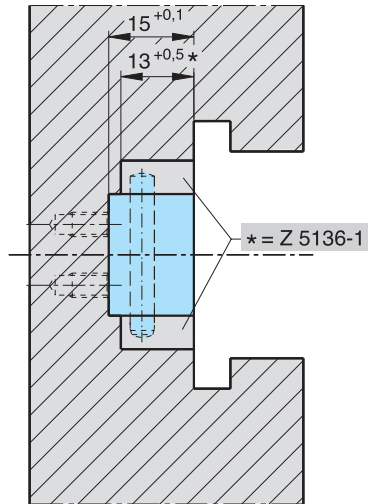
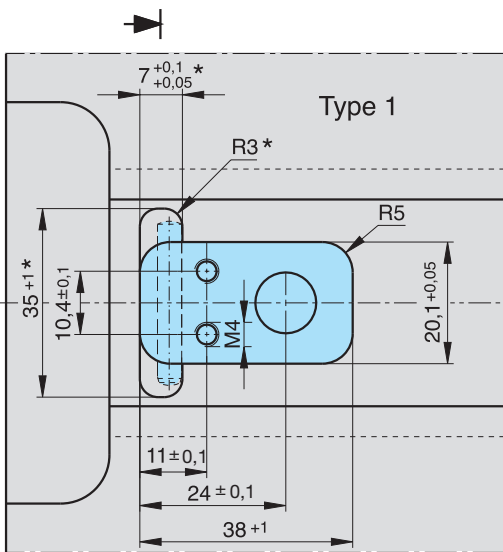
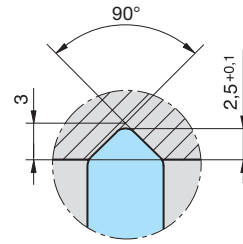
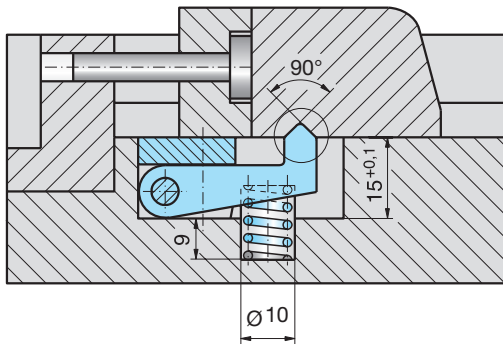
**Z 5134 max. 100 °C**

| D2 | B1   | t1 | t2  | t3  | t4   | D1   | D3   | R    | L0 | Ln   | P2   | P2 (HT) | SN 2500-  |
|----|------|----|-----|-----|------|------|------|------|----|------|------|---------|-----------|
| 7  | 6,6  | 7  | 1,0 | 1,4 | 6,3  | 8,4  | 5,3  | 0,35 | 12 | 7,5  | 34 N | 28 N    | 5-12      |
| 10 | 9,6  | 10 | 1,8 | 2,0 | 9,0  | 12,0 | 8,3  | 0,50 | 16 | 10,0 | 42 N | 35 N    | 8-16,5    |
| 15 | 14,4 | 15 | 2,8 | 3,0 | 13,5 | 18,0 | 12,4 | 0,75 | 18 | 16,0 | 92 N | 82 N    | 11,6-18,5 |





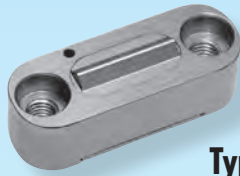
Z 5135- ... Z 5136-



**Schieberhaltevorrichtungen**

**Slide holding devices**

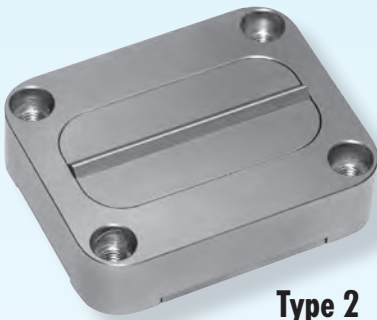
**Verrous de tiroirs**



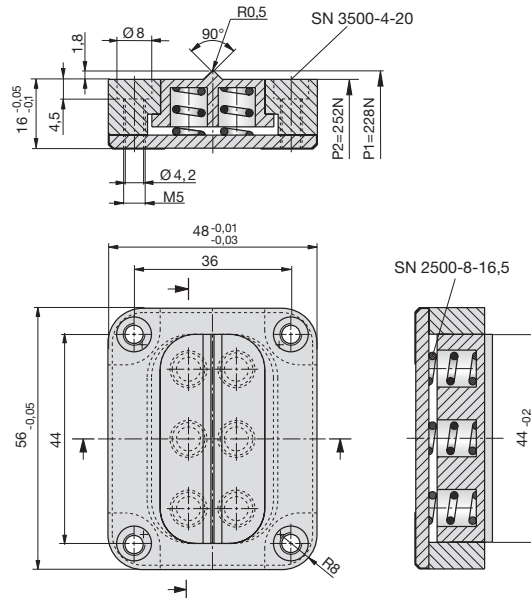
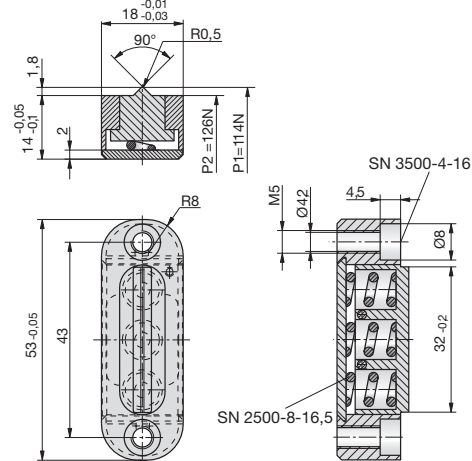
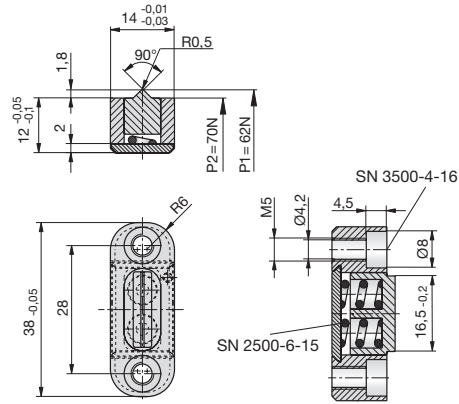
**Type 0**



**Type 1**



**Type 2**



**Z 5140-**

Mat.: 1.2343/54 -2HRC  
max. 100 °C

 Z 5140-Type



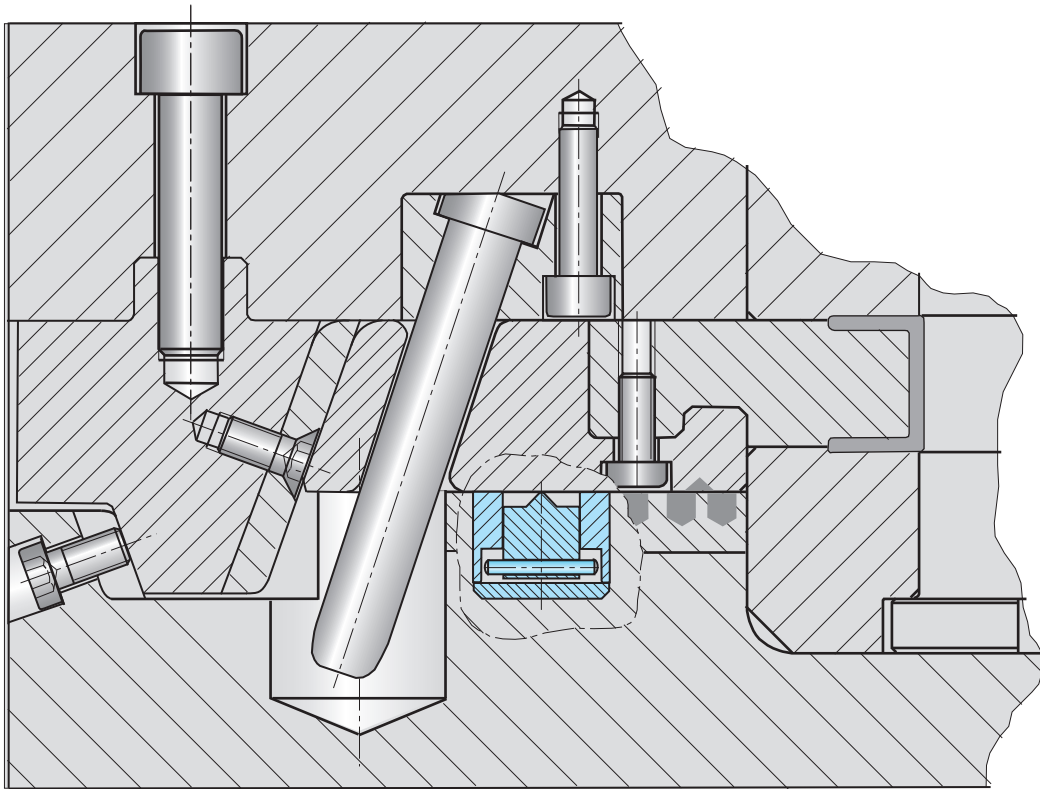
**Type**

0

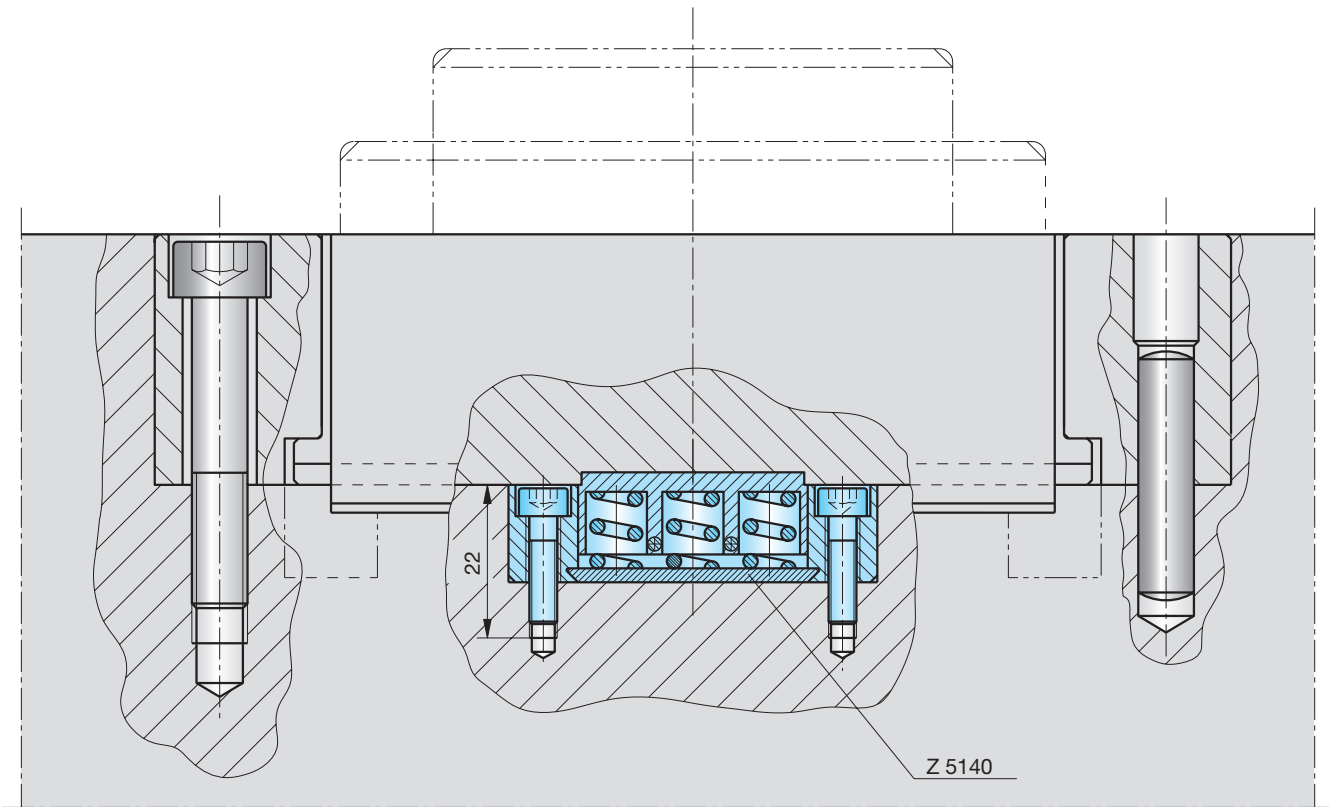
1

2

Z 5140-



5

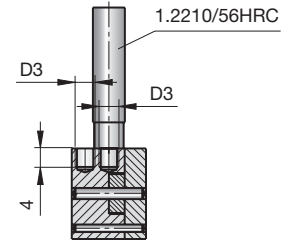
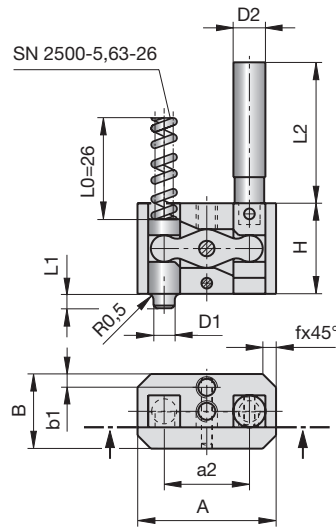




**Schieberhaltevorrichtungen**

**Slide holding devices**

**Verrous de tiroirs**




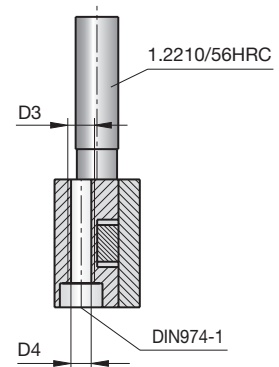
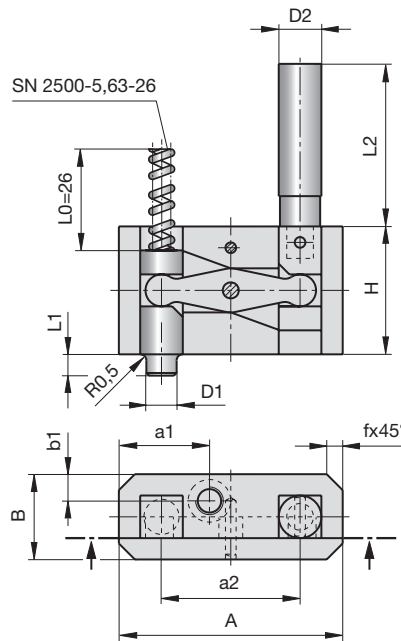
**Type 1**

5

**Z 5142-**

Mat.: 1.2767/56HRC  
max. 250 °C

 Z 5142-Type



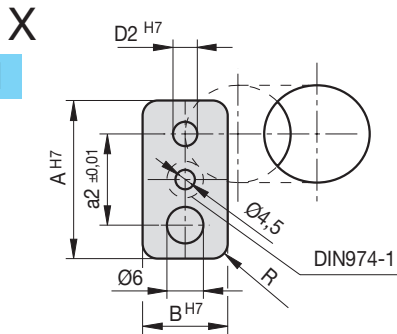
**Type 2**

**Type 3**

| Type | A  | B  | H  | a1 | a2 | b1  | D1 | D2 | D3 | D4  | D5  | f   | L1  | L2  | t1  | R   | F [kN] |
|------|----|----|----|----|----|-----|----|----|----|-----|-----|-----|-----|-----|-----|-----|--------|
| 1    | 26 | 14 | 17 | 13 | 16 | 2,5 | 4  | 6  | M4 | -   | 4,2 | 2,5 | 2,7 | 94  | 3,5 | 2,5 | 0,5    |
| 2    | 42 | 16 | 24 | 17 | 26 | 5,0 | 6  | 8  | M5 | 4,2 | 6,2 | 3,0 | 4,0 | 105 | 4,5 | 3,0 | 1,0    |
| 3    | 60 | 20 | 25 | 24 | 40 | 6,0 | 8  | 10 | M6 | 5,2 | 8,2 | 5,0 | 5,0 | 115 | 5,5 | 5,0 | 2,0    |

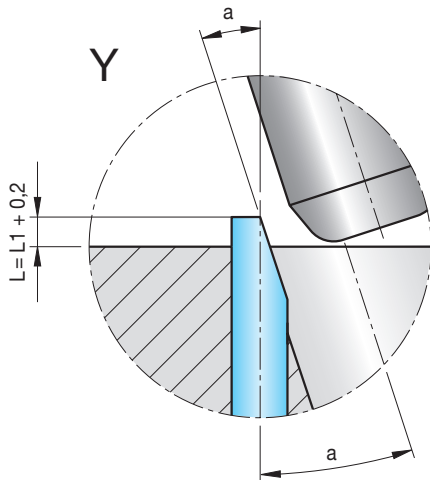
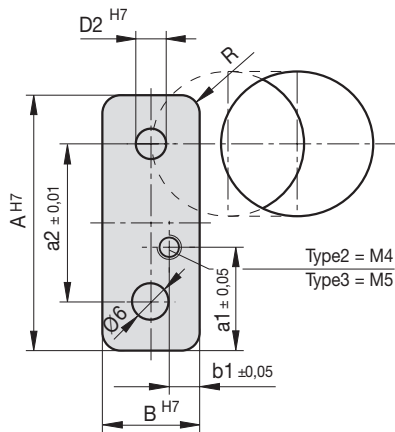
Z 5142-

**Type 1**

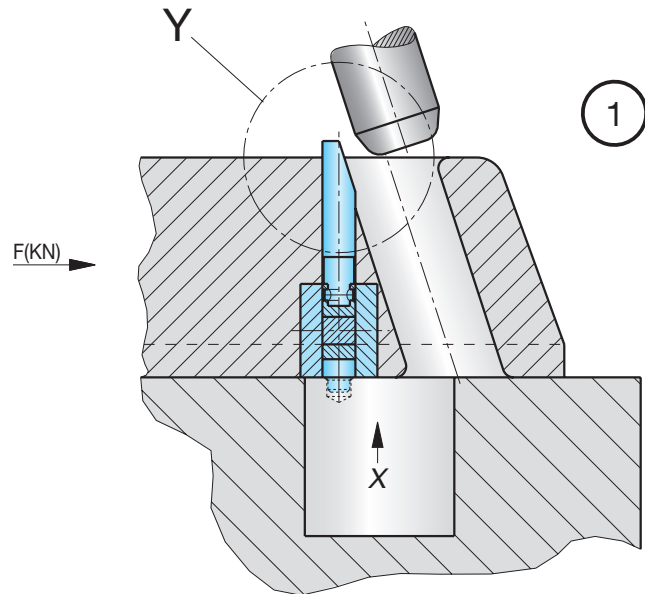
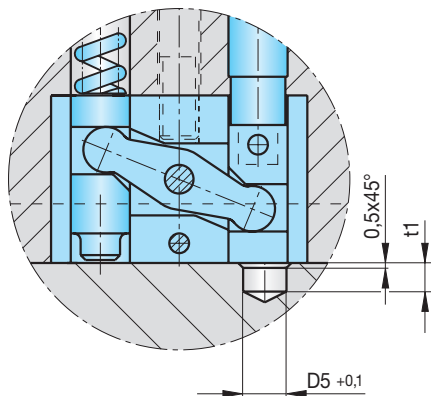


**Type 2**

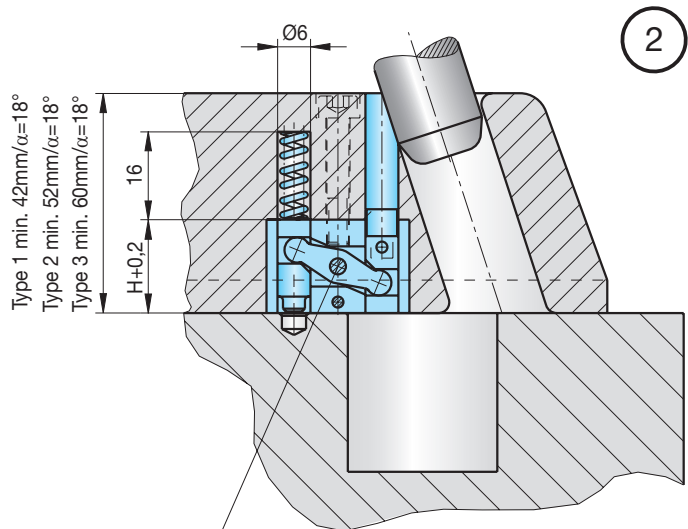
**Type 3**



**Z**



1

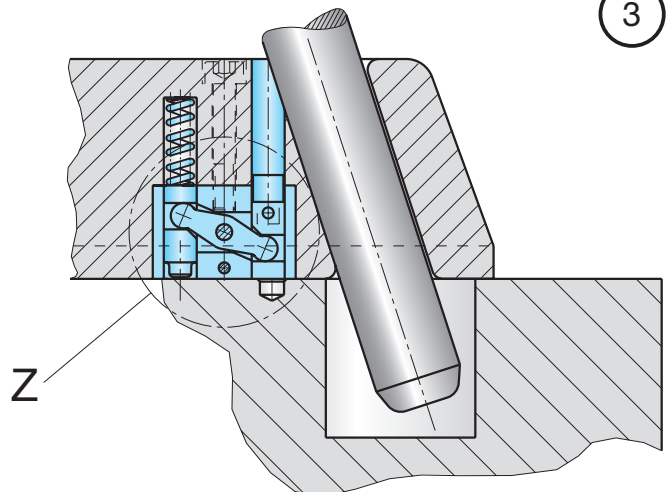


2

Type 1 min. 42mm/ $\alpha=18^\circ$   
Type 2 min. 52mm/ $\alpha=18^\circ$   
Type 3 min. 60mm/ $\alpha=18^\circ$

Ansicht um 90° verdreht gezeichnet  
View drawn rotated through 90°  
Vue tournée de 90°

3



**Z**



INGENIERIA DE MOLDES Y TROQUELES, S. A.

**STRACK**<sup>®</sup>  
NORMALIEN

Entformungselemente - direkt / Demoulding elements - direct / Eléments de démoulage - directs

[www.strack.de](http://www.strack.de)

5