

STRACK[®]
NORMALIEN



SCHIEBERELEMENTE
SLIDE ELEMENTS
ELEMENTS DE COULISSEAU



INGENIERIA DE MOLDES Y TROQUELES, S. A.

STRACK[®]
NORMALIEN

Entformungselemente - direkt / Demoulding elements - direct / Éléments de démoulage - directs

www.strack.de

Z 4200 5.6	Z 4205 5.10	Z 4210 5.11	Z 4211 5.12	Z 4220 5.13	Z 4222 5.14
Z 4230 5.15	Z 4240 5.16	Z 4070 5.18	Z 4165 5.20	Z 4166 5.21	Z 4242 5.22
Z 4244 5.24	Z 4248 5.26	Z 4278 5.28	Z 4279 5.28A	Z 4085 5.29	Z 4090 5.29
Z 4290 5.32	Z 4292 5.34	Z 4293 5.36	Z 4294 5.38	Z 4294 5.39	Z 4295 5.40
Z 4296 5.41	Z 4298 5.42	Z 4297 5.44			

5



INGENIERIA DE MOLDES Y TROQUELES, S. A.

STRACK[®]
NORMALIEN

Entformungselemente - direkt / Demoulding elements - direct / Éléments de démoulage - directs

www.strack.de

Schieberbaukästen

Slide construction kits

Bloc-éléments de tiroirs



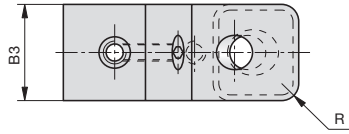
Z 4200-

Mat.: HSS (1.3343)
DIN ISO 8020 A

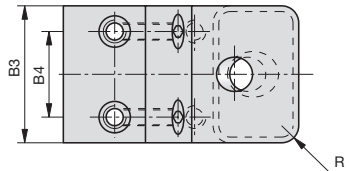
Z 4200-B1-t1-L1



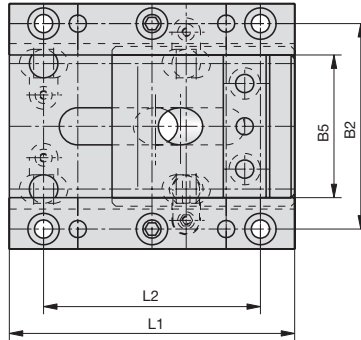
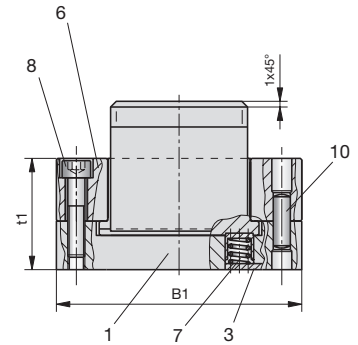
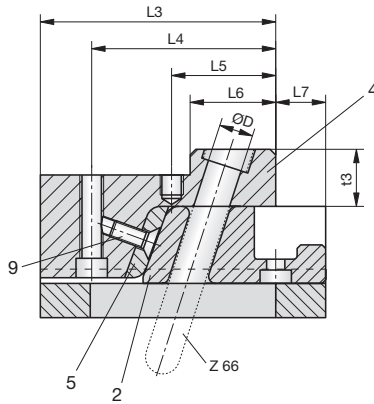
5



Type A



Type B



Pos. Item Pos.	STRACK NORM STRACK NORM NORME STRACK	Stück Qty. Nbr.	Bemerkung Remarks Observations
1	Z 4205-B1-t1-L1	1	
2	Z 4210-B2-t1-L1	1	
3	Z 4211-Type	2	
4	Z 4220-B1-t1-L1	1	
5	Z 4230-B1-t1-S1	1	
6	Z 4240-B1-t1-L1	2	
7	Z 5134-D2	1	ti ≤ 42 / Z 5134-7 ti > 42 / Z 5134-10
8	SN 3500-d-L	2	
9	SN 3550-d-L	1/2	
10	SN 1973-d-L1	4	

Toleranzen und fehlende Angaben siehe Einzelteile
See individual parts for tolerances and missing data
Tolérances et indications manquantes voir pièces détachées



Z 4200-

B1	t1	L1	Type	B2	B3	B4	B5	t2	t3	L2	L3	L4	L5	L6	L7	D	D2	D5	D6	R
50	28	75	A	38	18	-	20	11	20	60	65,0	50	26,0	20	10,0	8	M6	M5	M5	5
55	28	75	A	43	23	-	25	11	20	60	65,0	50	26,0	20	10,0	10	M6	M5	M5	5
60	28	75	B	48	28	14	30	11	20	60	70,0	57	36,0	30	5,0	12	M6	M5	M5	6
70	28	75	B	58	38	22	40	11	20	60	70,0	57	36,0	30	5,0	12	M6	M5	M5	6
80	28	75	B	68	48	32	50	11	20	60	70,0	57	36,0	30	5,0	12	M6	M5	M5	6
90	28	75	B	78	58	42	60	11	20	60	70,0	57	36,0	30	5,0	12	M6	M5	M5	6
60	28	90	B	48	28	14	30	11	20	70	70,0	57	36,0	30	5,0	12	M6	M5	M5	6
70	28	90	B	58	38	22	40	11	20	70	70,0	57	36,0	30	5,0	12	M6	M5	M5	6
80	28	90	B	68	48	32	50	11	20	70	70,0	57	36,0	30	5,0	12	M6	M5	M5	6
76	42	100	B	62	38	18	40	11	20	76	82,5	65	36,5	30	17,5	12	M8	M6	M6	6
86	42	100	B	72	48	28	50	11	20	76	82,5	65	36,5	30	17,5	12	M8	M6	M6	6
96	42	100	B	82	58	38	60	11	20	76	82,5	65	36,5	30	17,5	12	M8	M6	M6	6

Stückliste
Parts list
Liste des pièces

Z 4200-	Z 4205-(1x)	Z 4210-(1x)	Z 4220-(1x)	Z 4230-(1x)	Z 4240-(2x)	Z 5134-(1x)	Z 4211-(2x)
50 - 28 - 75	50 - 17 - 75	20 - 16 - 40	18 - 15 - 65	18 - 15 - 4	15 - 11 - 75	7	1
55 - 28 - 75	55 - 17 - 75	25 - 16 - 40	23 - 15 - 65	23 - 15 - 4	15 - 11 - 75	7	1
60 - 28 - 75	60 - 17 - 75	30 - 16 - 45	28 - 15 - 70	28 - 15 - 4	15 - 11 - 75	7	1
70 - 28 - 75	70 - 17 - 75	40 - 16 - 45	38 - 15 - 70	38 - 15 - 4	15 - 11 - 75	7	1
80 - 28 - 75	80 - 17 - 75	50 - 16 - 45	48 - 15 - 70	48 - 15 - 4	15 - 11 - 75	7	1
90 - 28 - 75	90 - 17 - 75	60 - 16 - 45	58 - 15 - 70	58 - 15 - 4	15 - 11 - 75	7	1
60 - 28 - 90	60 - 17 - 90	30 - 16 - 45	28 - 15 - 70	28 - 15 - 4	15 - 11 - 90	7	1
70 - 28 - 90	70 - 17 - 90	40 - 16 - 45	38 - 15 - 70	38 - 15 - 4	15 - 11 - 90	7	1
80 - 28 - 90	80 - 17 - 90	50 - 16 - 45	48 - 15 - 70	48 - 15 - 4	15 - 11 - 90	7	1
76 - 42 - 100	76 - 20 - 100	40 - 30 - 64	38 - 29 - 82,5	38 - 29 - 6	18 - 22 - 100	7	1
86 - 42 - 100	86 - 20 - 100	50 - 30 - 64	48 - 29 - 82,5	48 - 29 - 6	18 - 22 - 100	7	1
96 - 42 - 100	96 - 20 - 100	60 - 30 - 64	58 - 29 - 82,5	58 - 29 - 6	18 - 22 - 100	7	1

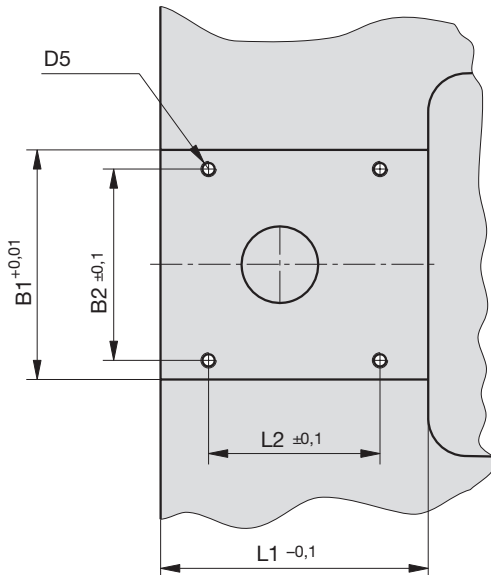
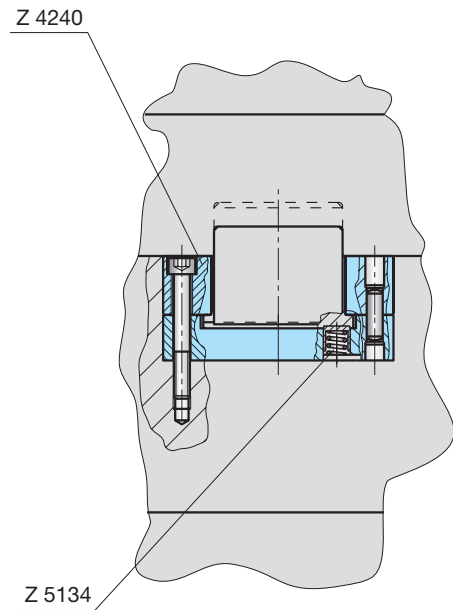
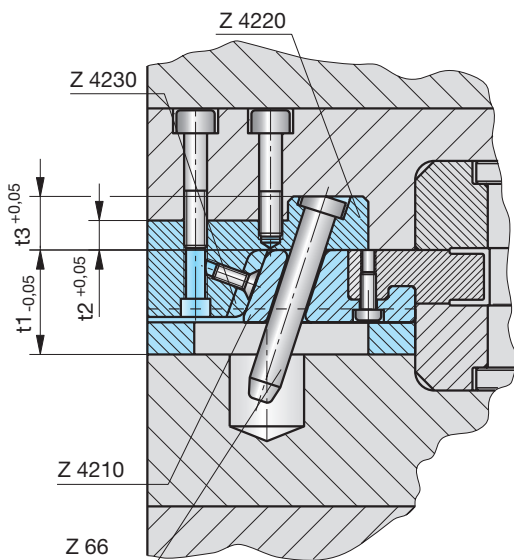
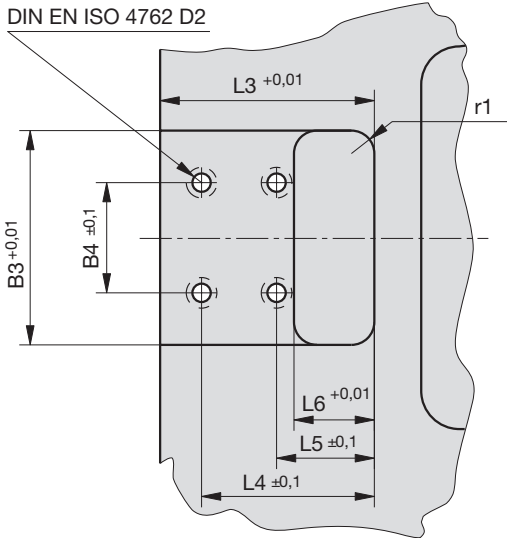


Z 4200-

Einbauvariante 1

Installation variant 1

Variante de montage 1



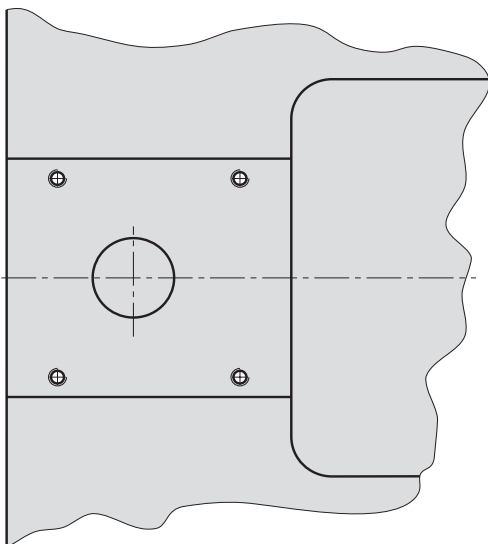
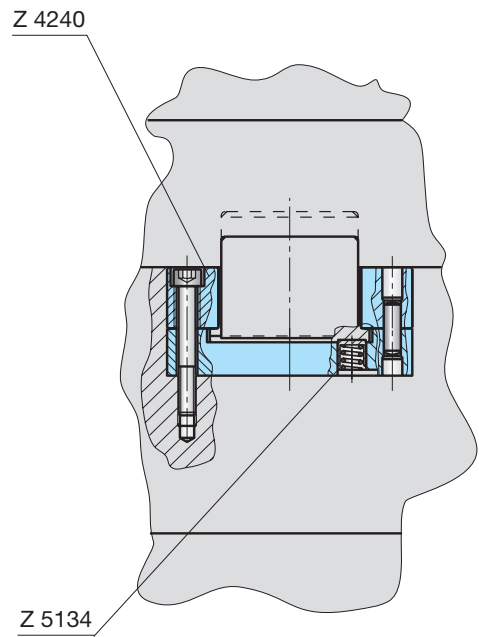
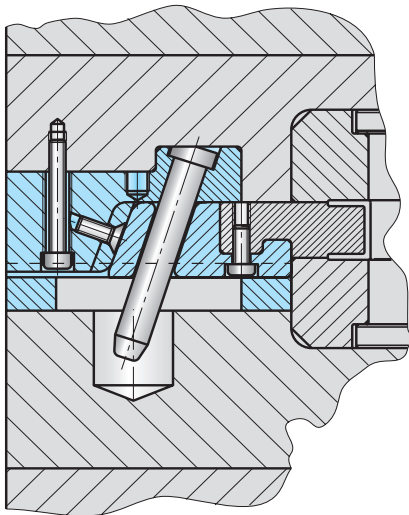
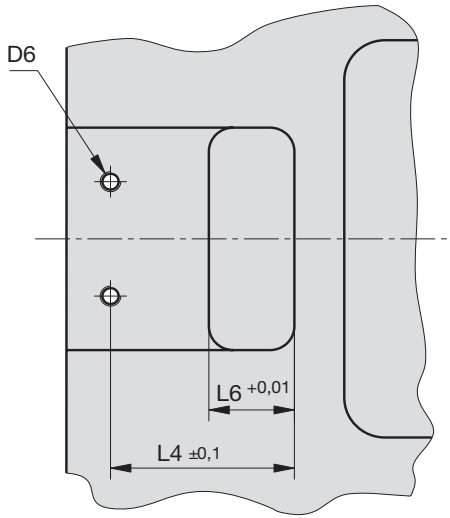


Z 4200-

Einbauvariante 2

Installation variant 2

Variante de montage 2





INGENIERIA DE MOLDES Y TROQUELES, S. A.

STRACK[®]
NORMALIEN

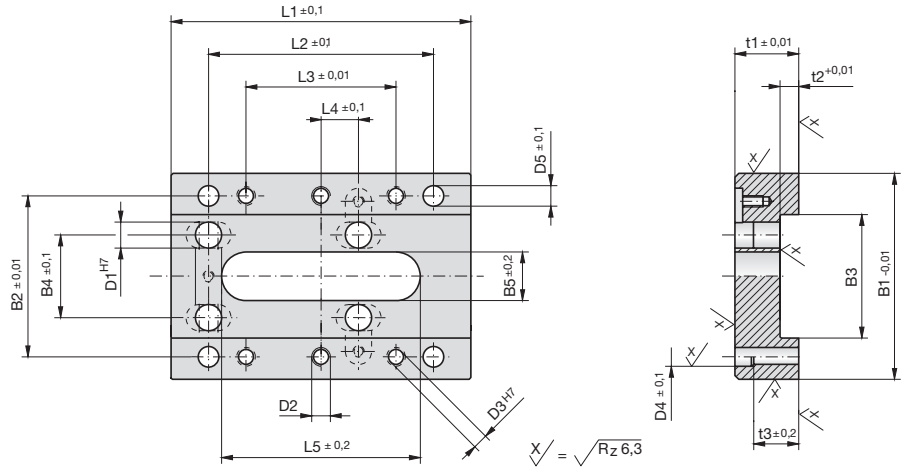
Entformungselemente - direkt / Demoulding elements - direct / Éléments de démoulage - directs

www.strack.de

Schieberkästen

Slide casings

Boîte à tiroirs



Z 4205-

Mat.: 1.2842/
58 +2HRC



Z 4205-B1-t1-L1



5

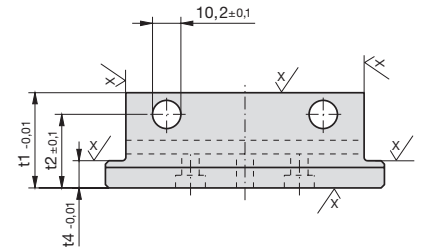
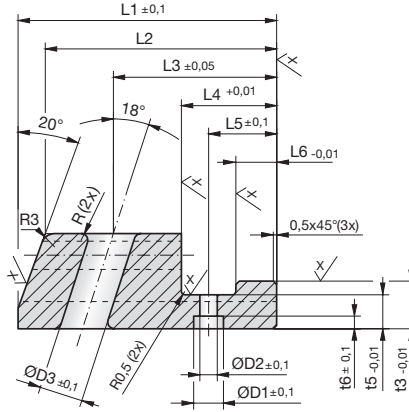
B1	t1	L1	B2	B3	B4	B5	t2	t3	L2	L3	L4	L5	D1	D2	D3	D4	D5
50	17	75	38	26	18	9	5	12	60	40	10	51	7	M5	4	5	5,5
55	17	75	43	31	21	11	5	12	60	40	10	51	7	M5	4	5	5,5
60	17	75	48	36	25	13	5	12	60	40	10	51	7	M5	4	5	5,5
70	17	75	58	46	32	13	5	12	60	40	10	51	7	M5	4	5	5,5
80	17	75	68	56	42	13	5	12	60	40	10	51	7	M5	4	5	5,5
90	17	75	78	66	52	13	5	12	60	40	10	51	7	M5	4	5	5,5
60	17	90	48	36	25	13	5	12	70	50	10	61	7	M5	4	5	5,5
70	17	90	58	46	32	13	5	12	70	50	10	61	7	M5	4	5	5,5
80	17	90	68	56	42	13	5	12	70	50	10	61	7	M5	4	5	5,5



Schieber

Slides

Tiroirs

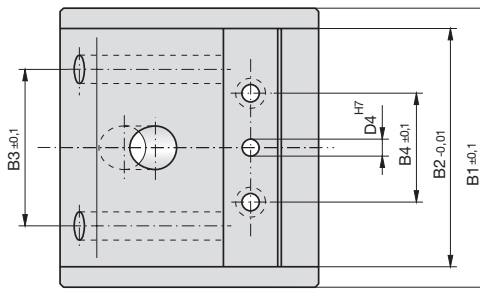


Z 4210-

Mat.: 1.2343/
52 +2HRC



Z 4210-B2-t1-L1



$$X/\sqrt{\quad} = \sqrt{Rz \ 6,3}$$

Nitriert ca. 70 HRC, max. 0,1 mm
Nitrided, approx. 70 HRC, 0.1 mm max.
Nitrué, env. 70 HRC, 0,1 mm max.

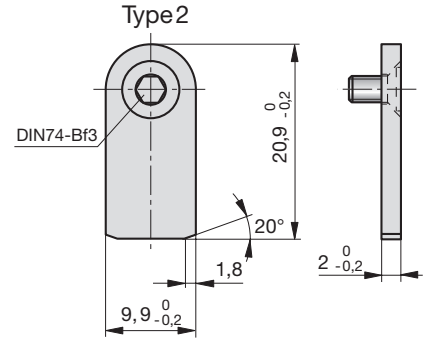
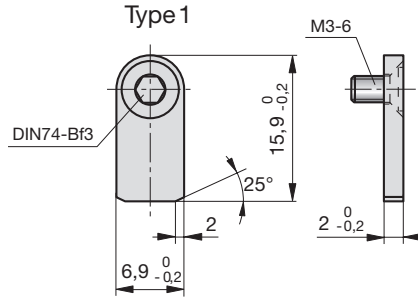
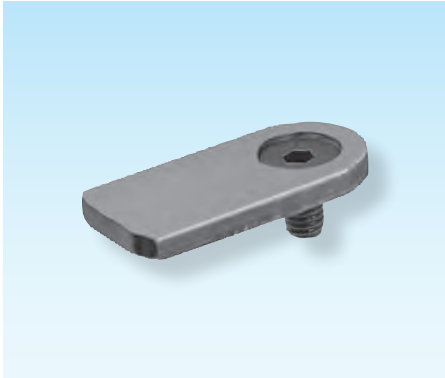
B2	t1	L1	B1	B3	B4	t2	t3	t4	t5	t6	L2	L3	L4	L5	L6	D1	D2	D3	D4	R
20	16	40	25	-	13	-	8	5	5	2,4	35	24	15	10	5	6	3,2	9	3	1,5
25	16	40	30	-	15	-	8	5	5	3,2	35	24	15	10	5	8	4,3	11	4	1,5
30	16	45	35	-	18	-	8	5	5	3,2	40	26	15	10	5	8	4,3	13	4	1,5
40	16	45	45	-	25	-	8	5	5	3,2	40	26	15	10	5	8	4,3	13	4	1,5
50	16	45	55	-	30	-	8	5	5	3,2	40	26	15	10	5	8	4,3	13	4	1,5
60	16	45	65	-	40	-	8	5	5	3,2	40	26	15	10	5	8	4,3	13	4	1,5



Halteplatten

Fixing plates

Plaquettes de fixation



Z 4211-

Z 4211-Type



Type

1

2

**Druckstücke mit
Schrägsäulenaufnahme**


Locking heels, double sided

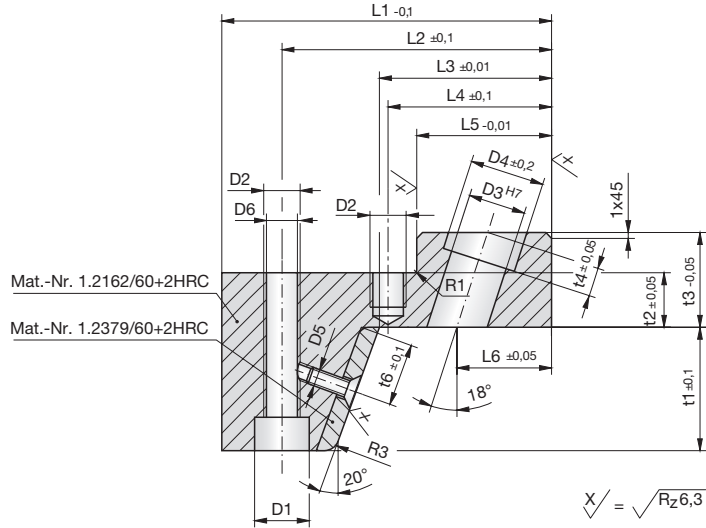
**Coins de fermeture avec
support de colonne oblique**



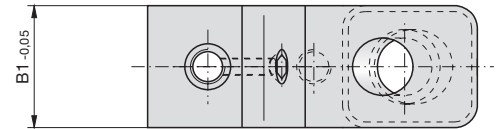
Z 4220-

Mat.: 1.2162/60 +2HRC
Mat.: 1.2379/60 +2HRC

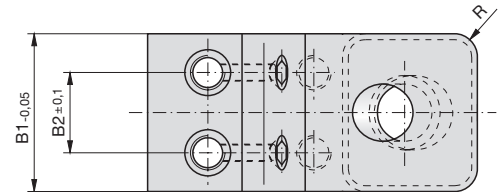
 Z 4220-B1-t1-L1



Type A



Type B



5

B1	t1	L1	Type	B2	t2	t3	t4	t6	L2	L3	L4	L5	L6	D1	D2	D3	D4	D5	D6	R
18	15	65	A	-	11	20	3	8	50	25,0	26,0	20	14,0	10	M6	8	11,5	M4	5,3	5
23	15	65	A	-	11	20	4	8	50	25,0	26,0	20	14,0	10	M6	10	14,5	M4	5,3	5
28	15	70	B	14	11	20	6	8	57	35,0	36,0	30	21,0	10	M6	12	17,0	M4	5,3	6
38	15	70	B	22	11	20	6	8	57	35,0	36,0	30	21,0	10	M6	12	17,0	M4	5,3	6
48	15	70	B	32	11	20	6	8	57	35,0	36,0	30	21,0	10	M6	12	17,0	M4	5,3	6
58	15	70	B	42	11	20	6	8	57	35,0	36,0	30	21,0	10	M6	12	17,0	M4	5,3	6
38	29	82,5	B	18	11	20	6	15	65	37,5	36,5	30	22,5	11	M8	12	17,0	M6	6,4	6
48	29	82,5	B	28	11	20	6	15	65	37,5	36,5	30	22,5	11	M8	12	17,0	M6	6,4	6
58	29	82,5	B	38	11	20	6	15	65	37,5	36,5	30	22,5	11	M8	12	17,0	M6	6,4	6
78	29	95	B	44	14	25	8	15	73	46,0	49,0	42	28,0	15	M10	16	21,0	M6	8,4	8
98	29	95	B	64	14	25	8	15	73	46,0	49,0	42	28,0	15	M10	16	21,0	M6	8,4	8
35	45	115	A	-	19	33	10	22	94	60,0	59,0	47	33,0	18	M12	20	26,0	M6	10,4	8
55	45	115	B	28	19	33	10	22	94	60,0	59,0	47	33,0	18	M12	20	26,0	M6	10,4	8



INGENIERIA DE MOLDES Y TROQUELES, S. A.

STRACK[®]
NORMALIEN

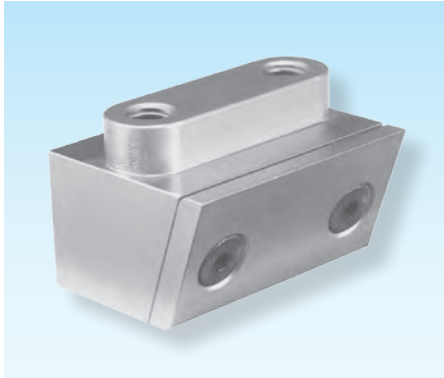
Entformungselemente - direkt / Demoulding elements - direct / Éléments de démoulage - directs

www.strack.de

Druckstücke

Locking heels

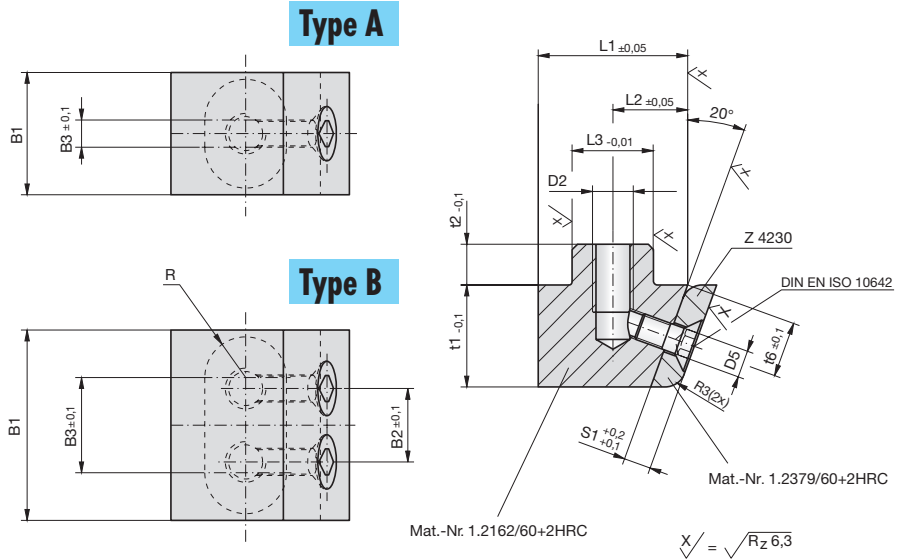
Coins de fermeture



Z 4222-

Mat.: 1.2162/60 +2HRC
Mat.: 1.2379/60 +2HRC

Z 4222-B1-t1



5

B1	t1	Type	B2	B3	t2	t6	L1	L2	L3	D2	D5	S1
18	15	A	—	4	6	8	22,0	11,0	12	M6	4,3	4
23	15	A	—	9	6	8	22,0	11,0	12	M6	4,3	4
28	15	B	14	14	6	8	22,0	11,0	12	M6	4,3	4
38	15	B	22	22	6	8	22,0	11,0	12	M6	4,3	4
48	15	B	32	32	6	8	22,0	11,0	12	M6	4,3	4
58	15	B	42	42	6	8	22,0	11,0	12	M6	4,3	4
38	29	B	18	18	10	15	38,6	18,6	18	M10	6,5	6
48	29	B	28	28	10	15	38,6	18,6	18	M10	6,5	6
58	29	B	38	38	10	15	38,6	18,6	18	M10	6,5	6
78	29	B	44	58	10	15	38,6	18,6	18	M10	6,5	6
98	29	B	64	78	10	15	38,6	18,6	18	M10	6,5	6
35	45	A	—	13	12	22	48,6	21,6	20	M10	6,5	6
55	45	B	28	28	12	22	48,6	21,6	20	M10	6,5	6
78	45	B	50	50	12	22	48,6	21,6	20	M10	6,5	6
98	45	B	70	70	12	22	48,6	21,6	20	M10	6,5	6



INGENIERIA DE MOLDES Y TROQUELES, S. A.

STRACK®
NORMALIEN

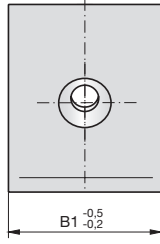
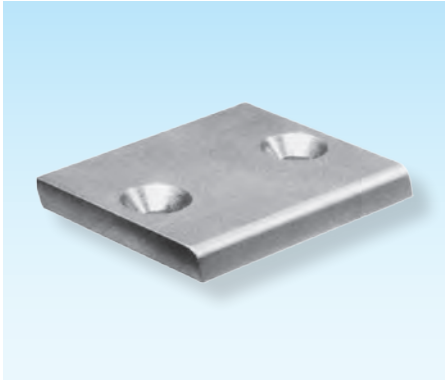
Entformungselemente - direkt / Demoulding elements - direct / Eléments de démoulage - directs

www.strack.de

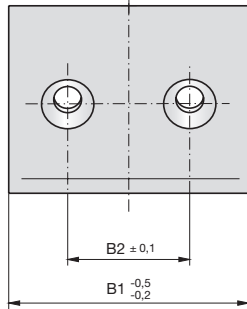
Druckplatten

Wear plates

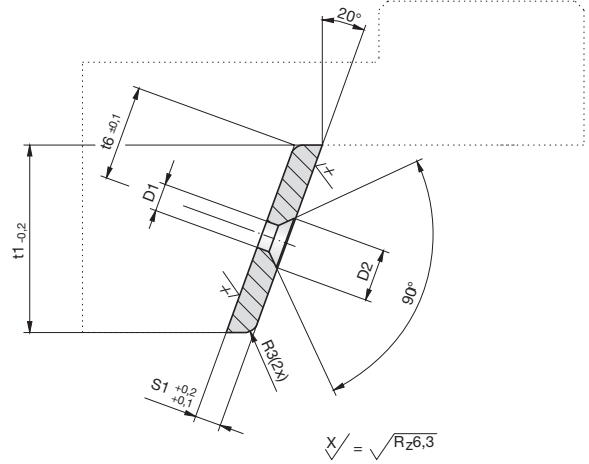
Plaques de pression



Type A



Type B



Z 4230-

Mat.: 1.2379/
60 +2HRC



Z 4230-B1-t1-S1



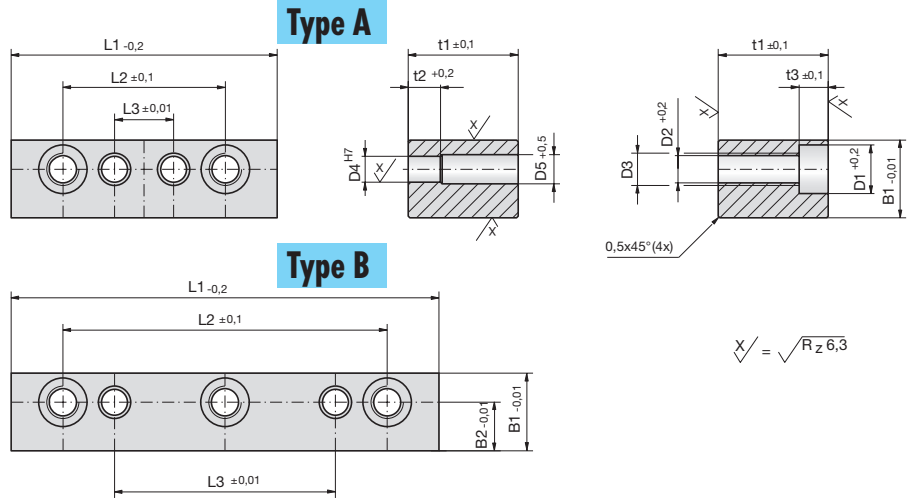
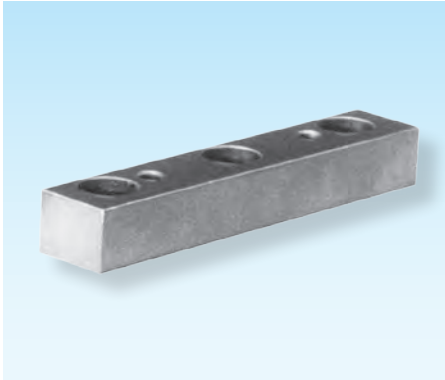
B1	t1	S1	Type	B2	t6	D1	D2
18	15	4	A	—	8	4,5	9,2
23	15	4	A	—	8	4,5	9,2
28	15	4	B	14	8	4,5	9,2
38	15	4	B	22	8	4,5	9,2
48	15	4	B	32	8	4,5	9,2
58	15	4	B	42	8	4,5	9,2
38	29	6	B	18	15	6,6	13,7
48	29	6	B	28	15	6,6	13,7
58	29	6	B	38	15	6,6	13,7
78	29	6	B	44	15	6,6	13,7
98	29	6	B	64	15	6,6	13,7
35	45	6	A	—	22	6,6	13,7
55	45	6	B	28	22	6,6	13,7
78	45	6	B	50	22	6,6	13,7
98	45	6	B	70	22	6,6	13,7



Führungsleisten

Guide strips

Barres de guidage



Z 4240-

Mat.: 1.2842/
58 +2HRC

Z 4240-B1-t1-L1



5

B1	t1	L1	Type	B2	t2	t3	L2	L3	D1	D2	D3	D4	D5
15	11	50	A	9	-	5,7	30	10	10	5,3	M6	4	-
15	11	60	A	9	-	5,7	40	20	10	5,3	M6	4	-
15	11	70	B	9	-	5,7	50	30	10	5,3	M6	4	-
15	11	75	B	9	-	5,7	60	40	10	5,3	M6	4	-
15	11	80	B	9	-	5,7	60	40	10	5,3	M6	4	-
15	11	90	B	9	-	5,7	70	50	10	5,3	M6	4	-
18	22	80	A	11	12	6,8	56	32	11	6,4	M8	6	7
18	22	100	B	11	12	6,8	76	52	11	6,4	M8	6	7
18	22	120	B	11	12	6,8	96	72	11	6,4	M8	6	7
18	22	140	B	11	12	6,8	116	92	11	6,4	M8	6	7
18	22	160	B	11	12	6,8	136	112	11	6,4	M8	6	7
24	36	100	A	15	12	9,0	68	36	15	8,5	M10	8	9
24	36	120	A	15	12	9,0	88	56	15	8,5	M10	8	9
24	36	140	B	15	12	9,0	108	76	15	8,5	M10	8	9
24	36	160	B	15	12	9,0	128	96	15	8,5	M10	8	9
24	36	180	B	15	12	9,0	148	116	15	8,5	M10	8	9
30	50	120	A	18	18	11,0	80	40	18	10,5	M12	10	11
30	50	140	A	18	18	11,0	100	60	18	10,5	M12	10	11
30	50	160	B	18	18	11,0	120	80	18	10,5	M12	10	11
30	50	180	B	18	18	11,0	140	100	18	10,5	M12	10	11
30	50	200	B	18	18	11,0	160	120	18	10,5	M12	10	11
36	63	140	A	22	18	13,0	92	44	20	12,5	M14	12	13
36	63	160	A	22	18	13,0	112	64	20	12,5	M14	12	13
36	63	180	B	22	18	13,0	132	84	20	12,5	M14	12	13
36	63	200	B	22	18	13,0	152	104	20	12,5	M14	12	13
36	63	220	B	22	18	13,0	172	124	20	12,5	M14	12	13



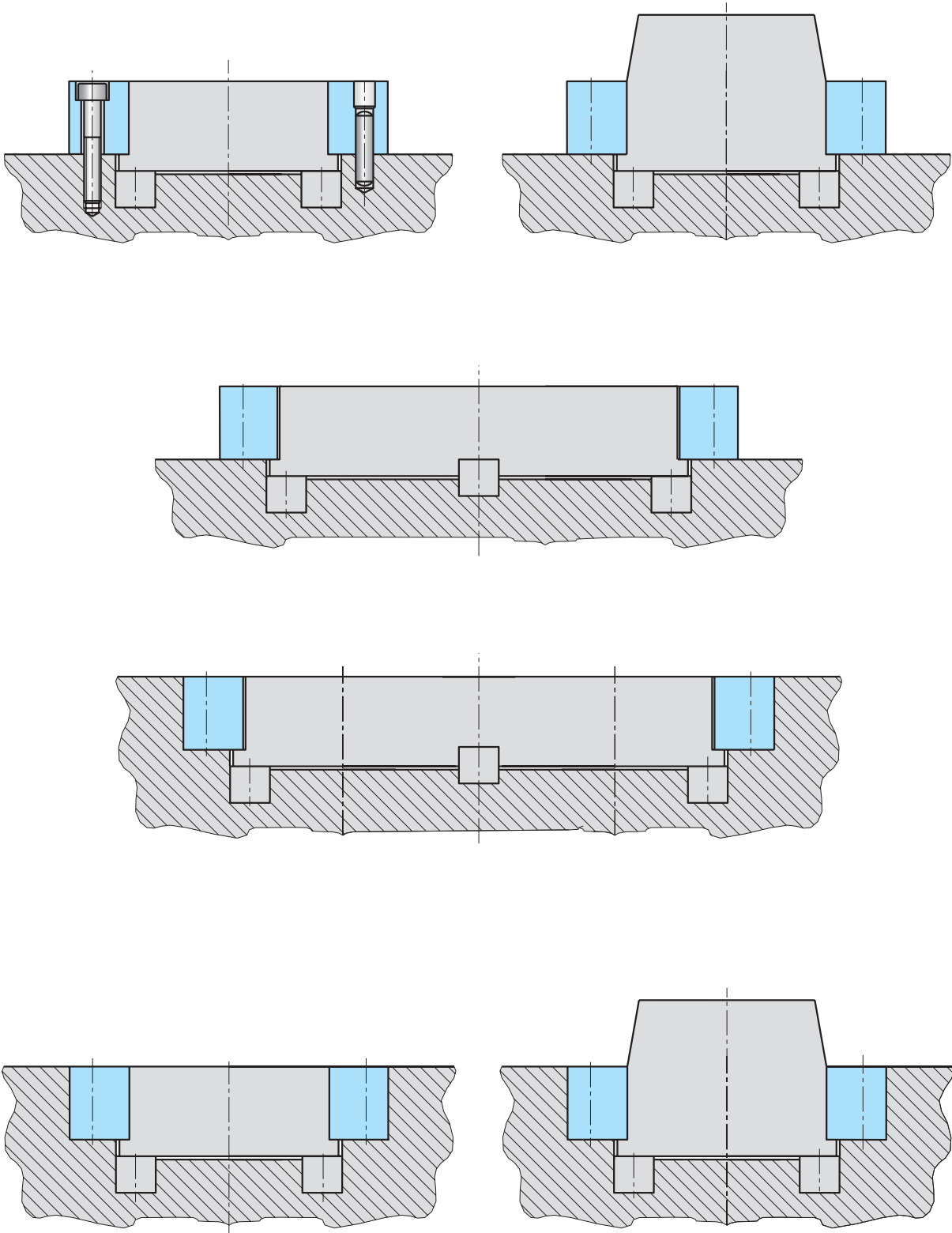
INGENIERIA DE MOLDES Y TROQUELES, S. A.

STRACK[®]
NORMALIEN

Entformungselemente - direkt / Demoulding elements - direct / Eléments de démoulage - directs

www.strack.de

Z 4240-



5



Schrägsäulenaufnahmen

Inclined column holders

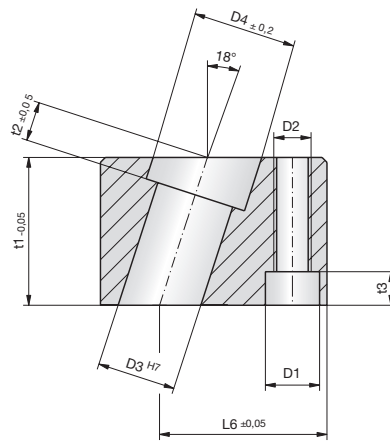
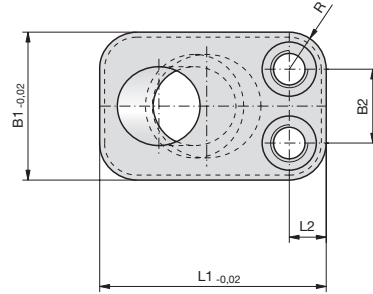
Supports pour colonnes obliques



Z 4070-

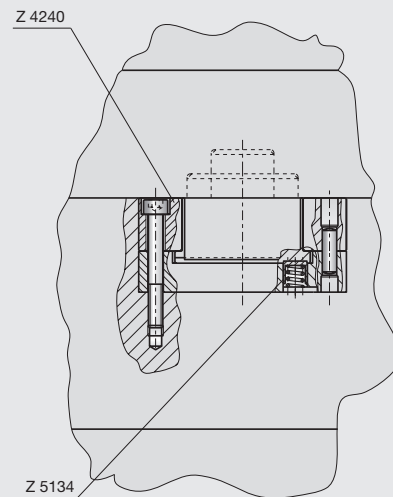
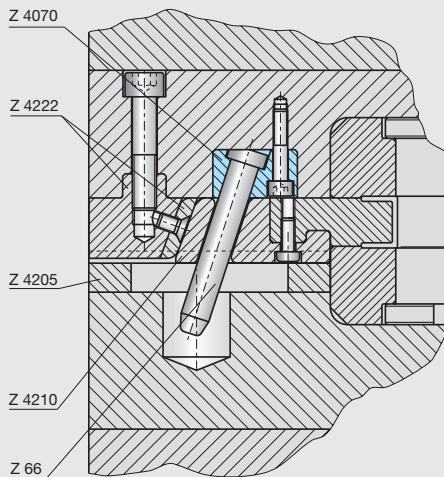
Mat.: 1.2162/
60 +2HRC

Z 4070-L1-D3



5

L1	D3	B1	B2	t1	t2	t3	L2	L6	D1	D2	D4	R
30	8	26	12	16	3,0	7	7,0	24	11	M8	11,5	7,0
30	10	26	12	20	4,0	7	7,0	24	11	M8	14,5	7,0
35	12	26	12	22	6,0	7	7,0	27	11	M8	16,5	7,0
46	16	30	15	30	8,0	7	7,5	34	11	M8	21,0	7,5
55	20	40	22	36	10,0	9	9,0	41	14	M10	26,0	9,0
70	25	46	24	46	12,5	11	11,0	52	18	M12	33,0	11,0
80	32	52	30	52	12,5	11	11,0	56	18	M12	41,0	11,0





INGENIERIA DE MOLDES Y TROQUELES, S. A.

STRACK[®]
NORMALIEN

Entformungselemente - direkt / Demoulding elements - direct / Éléments de démoulage - directs

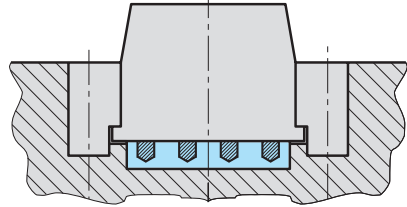
www.strack.de

Produktübersicht

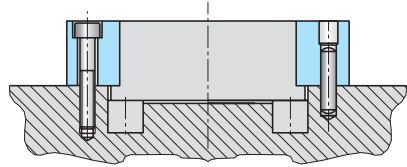
Product range

Presentation des produits

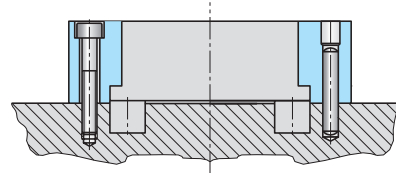
Z 4165/ Z 4166



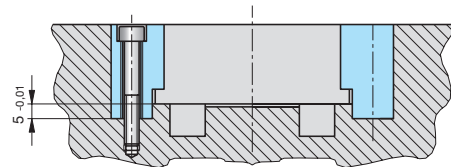
Z 4240



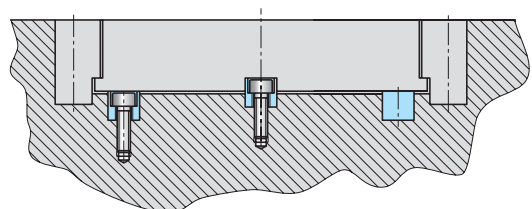
Z 4242



Z 4244



Z 4248



5



INGENIERIA DE MOLDES Y TROQUELES, S. A.

STRACK
NORMALIEN

Entformungselemente - direkt / Demoulding elements - direct / Éléments de démoulage - directs

www.strack.de

**Flachführungsleisten,
selbstschmierend**

**Flat guide strips,
self-lubricating**

**Barres de guidage plate,
autolubrifiantes**



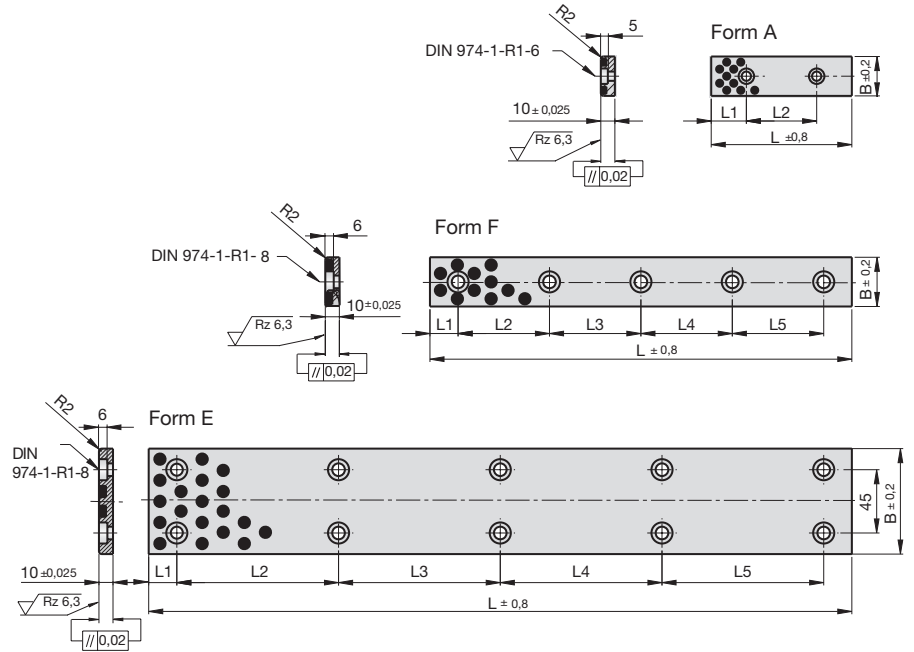
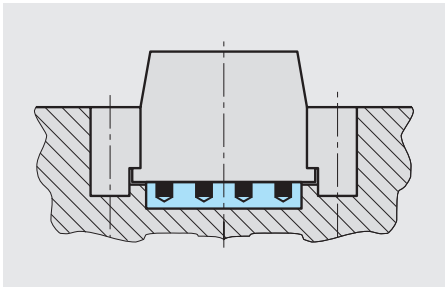
Z 4165-

Mat.: Bronze
190-220 HB S10/3000

Z 4165-B-L



5

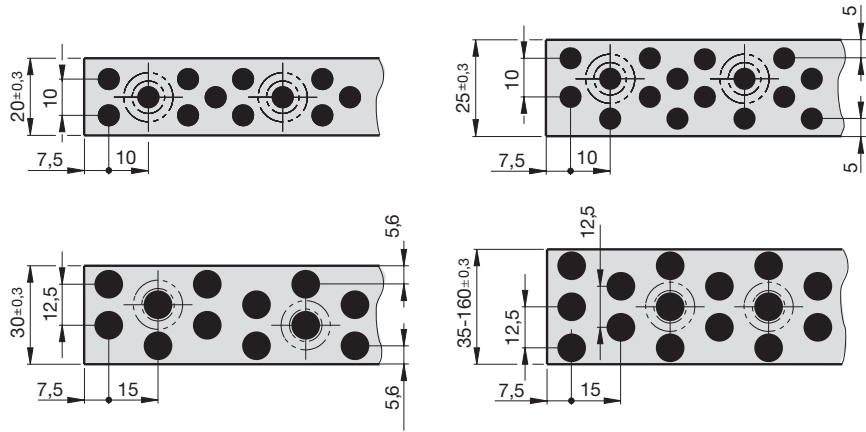
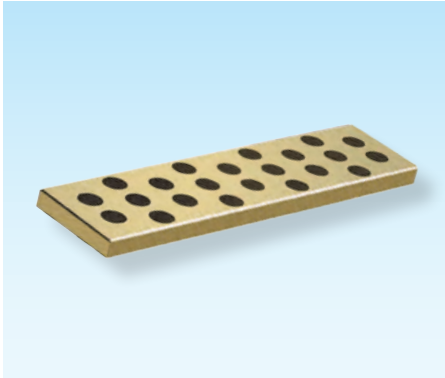


B	L	Form	L1	L2	L3	L4	L5	DIN 974 -1-R1-	Bohrungen Drillings Perçages	B	L	Form	L1	L2	L3	L4	L5	DIN 974 -1-R1-	Bohrungen Drillings Perçages
18	75	A	15	45				6	2	48	75	A	15	45				6	2
18	100	A	25	50				6	2	48	100	A	25	50				6	2
18	125	A	25	75				6	2	48	125	A	25	75				6	2
18	150	A	25	100				6	2	48	150	A	25	100				6	2
28	75	A	15	45				6	2	50	100	F	20	60				8	2
28	100	A	25	50				6	2	50	150	F	20	55	55			8	3
28	125	A	25	75				6	2	50	200	F	20	55	50	55		8	4
28	150	A	25	100				6	2	50	250	F	20	70	70	70		8	4
35	100	F	20	60				8	2	50	300	F	20	65	65	65	65	8	5
35	150	F	20	55	55			8	3	50	350	F	20	80	75	75	80	8	5
35	200	F	20	55	50	55		8	4	50	400	F	20	90	90	90	90	8	5
35	250	F	20	70	70	70		8	4	75	150	E	20	110	90	90	90	8	4
35	300	F	20	65	65	65	65	8	5	75	200	E	20	80	80	90	90	8	6
35	350	F	20	80	75	75	80	8	5	75	250	E	20	105	105	90	90	8	6
38	75	A	15	45				6	2	75	300	E	20	85	90	85	90	8	8
38	100	A	25	50				6	2	75	400	E	20	120	120	120	90	8	8
38	125	A	25	75				6	2	75	500	E	20	115	115	115	115	8	10
38	150	A	25	100				6	2										

**Flachführungsleisten,
selbstschmierend**

**Flat guide strips,
self-lubricating**

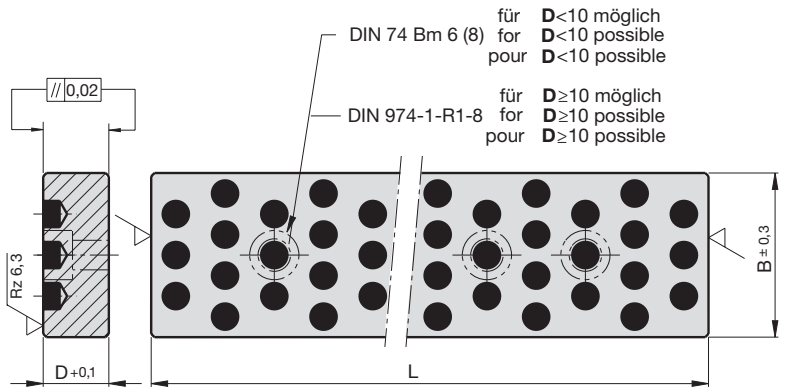
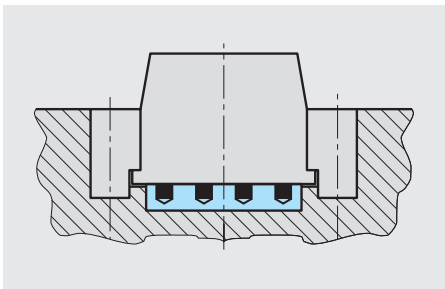
**Barres de guidage plate,
autolubrifiantes**



Z 4166-

Mat.: Bronze
190-220 HB S10/3000
>150 °C

Z 4166-B-D-L



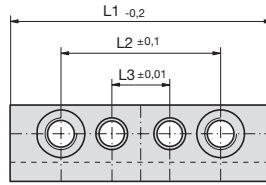
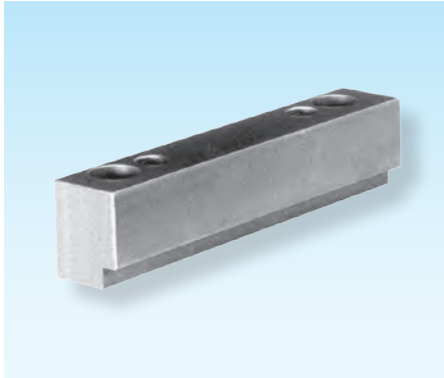
5

B	D	L	B	D	L
20	4	305 ±0,3	60	12	315 -4 375 -4 630 -4 1005 ±0,8
30	4		80	12	
25	5		40	16	
40	5	605 ±0,3	60	16	
30	6		80	16	
40	6		100	16	
30	8	315 -4	50	20	
40	8		80	20	
30	10		100	20	
35	10	375 -4	125	20	
40	10	630 -4	160	20	
50	10	1005 ±0,8	80	25	
80	10	1005 ±0,8	100	25	
30	12		125	25	
40	12		160	25	
50	12				

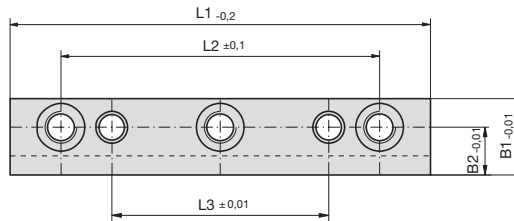
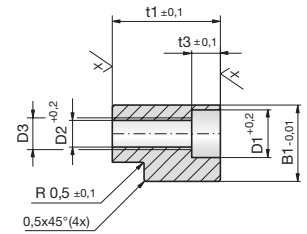
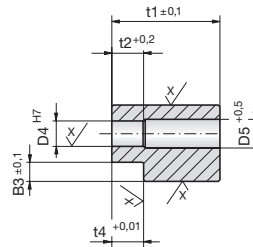
Führungsleisten

Guide strips

Barres de guidage



Type A



Type B

$$X/\sqrt{\quad} = \sqrt{Rz\ 6,3}$$

Z 4242-

Mat.: 1.2842/
58 +2HRC



Z 4242-B1-t1-L1



5

B1	t1	L1	Type	B2	B3	t2	t3	t4	L2	L3	D1	D2	D3	D4	D5
15	16	50	A	9	3	-	5,7	5	30	10	10	5,3	M6	4	-
15	16	60	A	9	3	-	5,7	5	40	20	10	5,3	M6	4	-
15	16	70	B	9	3	-	5,7	5	50	30	10	5,3	M6	4	-
15	16	75	B	9	3	-	5,7	5	60	40	10	5,3	M6	4	-
15	16	80	B	9	3	-	5,7	5	60	40	10	5,3	M6	4	-
15	16	90	B	9	3	-	5,7	5	70	50	10	5,3	M6	4	-
18	30	80	A	11	4	12	6,8	8	56	32	11	6,4	M8	6	7
18	30	100	A	11	4	12	6,8	8	76	52	11	6,4	M8	6	7
18	30	120	B	11	4	12	6,8	8	96	72	11	6,4	M8	6	7
18	30	140	B	11	4	12	6,8	8	116	92	11	6,4	M8	6	7
18	30	160	B	11	4	12	6,8	8	136	112	11	6,4	M8	6	7
24	46	100	A	15	6	12	9,0	10	68	36	15	8,5	M10	8	9
24	46	120	A	15	6	12	9,0	10	88	56	15	8,5	M10	8	9
24	46	140	B	15	6	12	9,0	10	108	76	15	8,5	M10	8	9
24	46	160	B	15	6	12	9,0	10	128	96	15	8,5	M10	8	9
24	46	180	B	15	6	12	9,0	10	148	116	15	8,5	M10	8	9



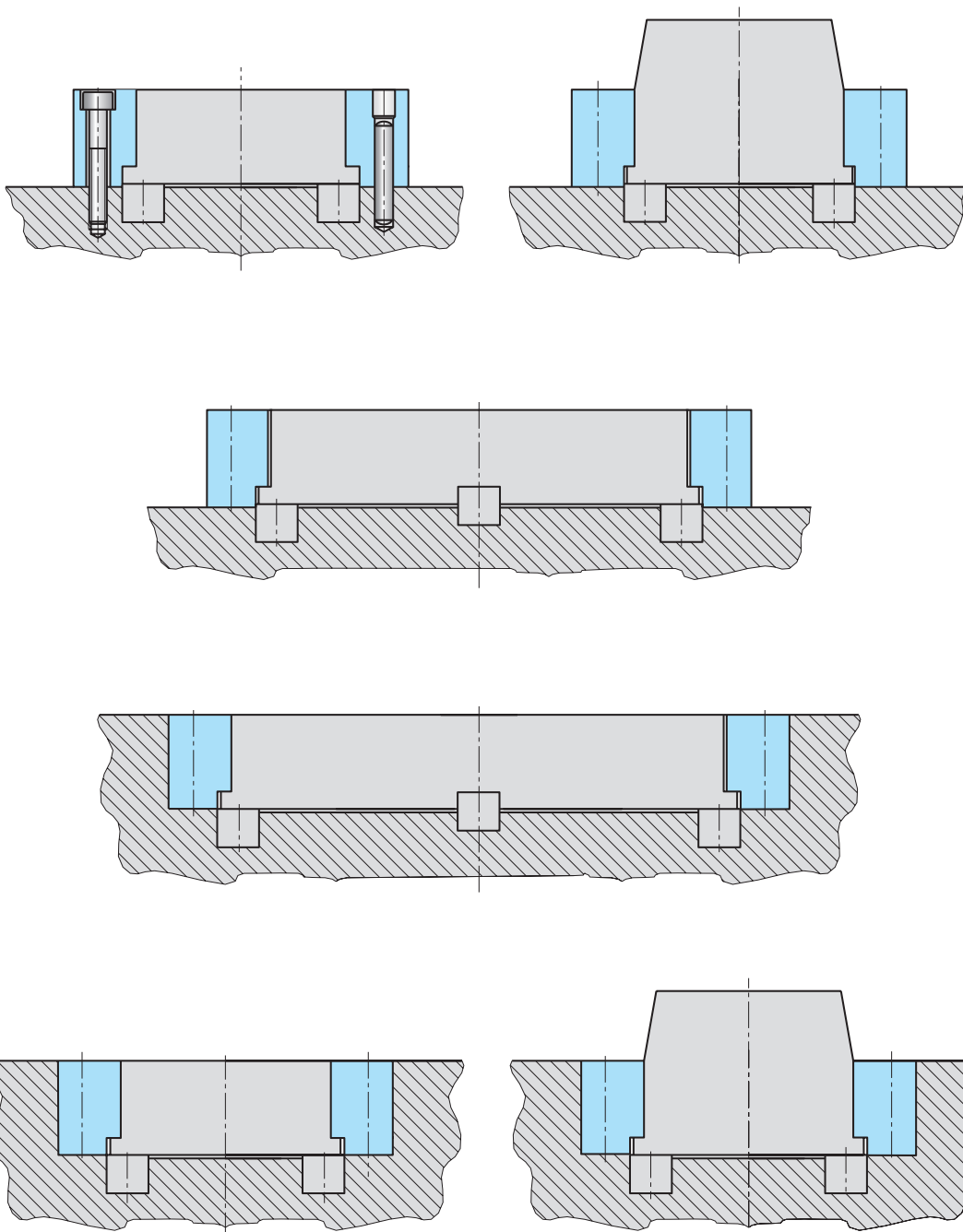
INGENIERIA DE MOLDES Y TROQUELES, S. A.

STRACK[®]
NORMALIEN

Entformungselemente - direkt / Demoulding elements - direct / Eléments de démoulage - directs

www.strack.de

Z 4242-



5



INGENIERIA DE MOLDES Y TROQUELES, S. A.

STRACK[®]
NORMALIEN

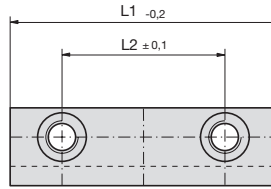
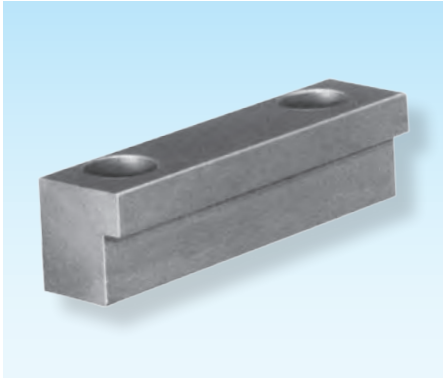
Entformungselemente - direkt / Demoulding elements - direct / Éléments de démoulage - directs

www.strack.de

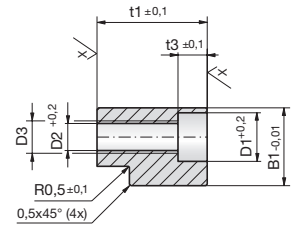
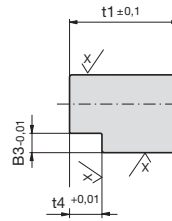
Führungsleisten

Guide strips

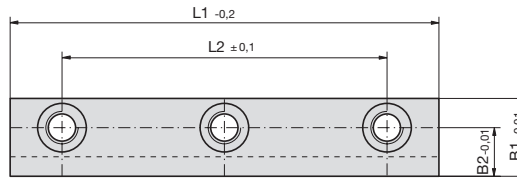
Barres de guidage



Type A



$$X/\sqrt{R} \geq 6,3$$



Type B

Z 4244-

Mat.: 1.2842/
58 +2HRC

Z 4244-B1-t1-L1



5

B1	t1	L1	Type	B2	B3	t3	t4	L2	D1	D2	D3
15	21	50	A	9	3	5,7	10	30	10	5,3	M6
15	21	60	A	9	3	5,7	10	40	10	5,3	M6
15	21	70	B	9	3	5,7	10	50	10	5,3	M6
15	21	75	B	9	3	5,7	10	60	10	5,3	M6
15	21	80	B	9	3	5,7	10	60	10	5,3	M6
15	21	90	B	9	3	5,7	10	70	10	5,3	M6
18	35	80	A	11	4	6,8	13	56	11	6,4	M8
18	35	100	A	11	4	6,8	13	76	11	6,4	M8
18	35	120	B	11	4	6,8	13	96	11	6,4	M8
18	35	140	B	11	4	6,8	13	116	11	6,4	M8
18	35	160	B	11	4	6,8	13	136	11	6,4	M8
24	51	100	A	15	6	9,0	15	68	15	8,5	M10
24	51	120	A	15	6	9,0	15	88	15	8,5	M10
24	51	140	B	15	6	9,0	15	108	15	8,5	M10
24	51	160	B	15	6	9,0	15	128	15	8,5	M10
24	51	180	B	15	6	9,0	15	148	15	8,5	M10
30	65	120	A	18	6	11,0	15	80	18	10,5	M12
30	65	140	A	18	6	11,0	15	100	18	10,5	M12
30	65	160	B	18	6	11,0	15	120	18	10,5	M12
30	65	180	B	18	6	11,0	15	140	18	10,5	M12
30	65	200	B	18	6	11,0	15	160	18	10,5	M12



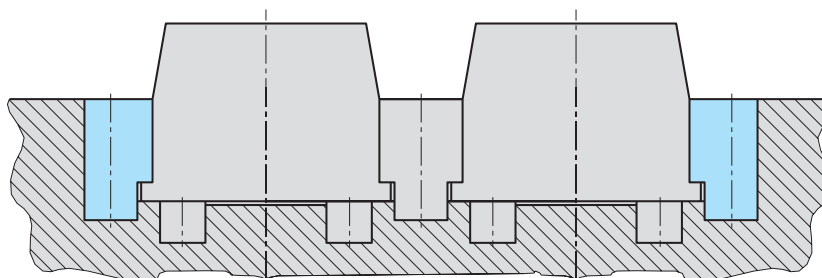
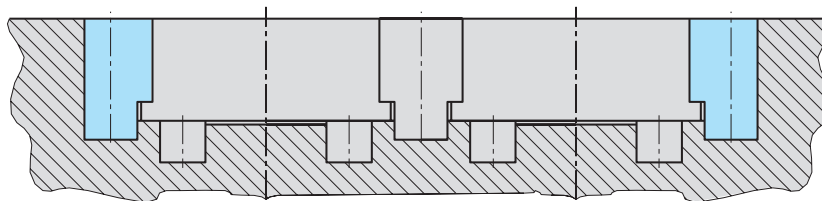
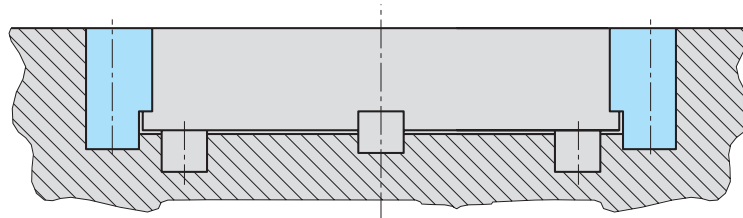
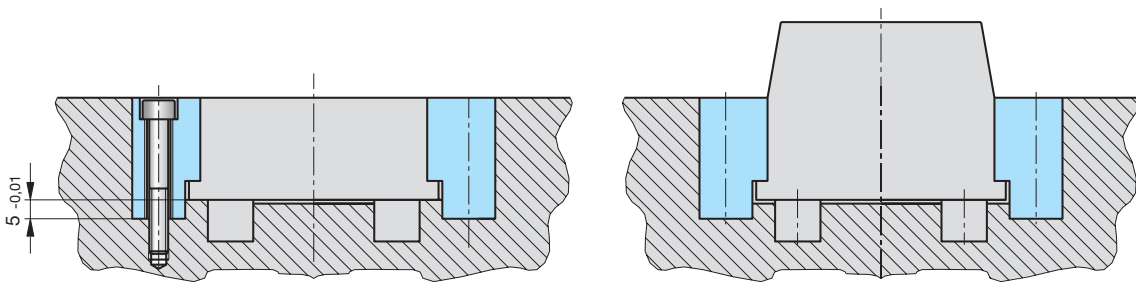
INGENIERIA DE MOLDES Y TROQUELES, S. A.

STRACK[®]
NORMALIEN

Entformungselemente - direkt / Demoulding elements - direct / Eléments de démoulage - directs

www.strack.de

Z 4244-



5



INGENIERIA DE MOLDES Y TROQUELES, S. A.

STRACK[®]
NORMALIEN

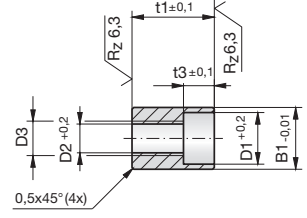
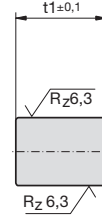
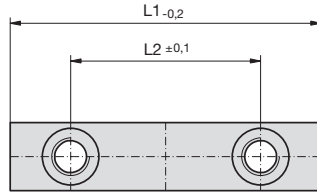
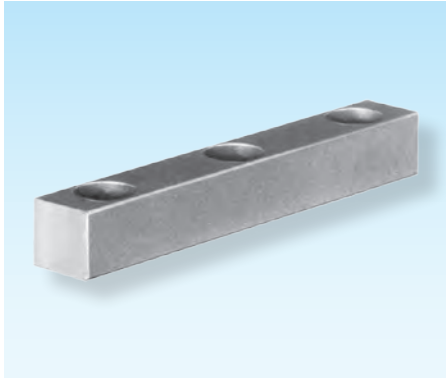
Entformungselemente - direkt / Demoulding elements - direct / Éléments de démoulage - directs

www.strack.de

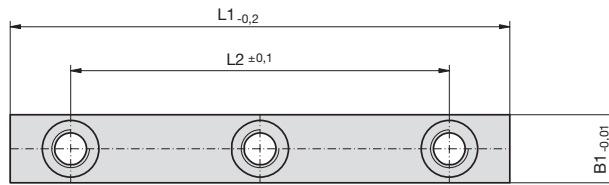
Führungsleisten

Guide strips

Barres de guidage



Type A



Type B

Z 4248-

Mat.: 1.2842/
58 +2HRC



Z 4248-B1-t1-L1



5

B1	t1	L1	Type	t3	L2	D1	D2	D3
12	11	50	A	5,7	30	10	5,3	M6
12	11	60	A	5,7	40	10	5,3	M6
12	11	70	B	5,7	50	10	5,3	M6
12	11	75	B	5,7	60	10	5,3	M6
12	11	80	B	5,7	60	10	5,3	M6
12	11	90	B	5,7	70	10	5,3	M6
12	16	100	B	5,7	80	10	5,3	M6
12	16	120	B	5,7	100	10	5,3	M6
12	16	140	B	5,7	120	10	5,3	M6
12	16	160	B	5,7	140	10	5,3	M6
12	16	180	B	5,7	160	10	5,3	M6
18	16	100	A	6,8	76	11	6,4	M8
18	16	120	A	6,8	96	11	6,4	M8
18	16	140	B	6,8	116	11	6,4	M8
18	16	160	B	6,8	136	11	6,4	M8
18	16	180	B	6,8	156	11	6,4	M8
24	21	140	B	6,8	116	11	6,4	M8
24	21	160	B	6,8	136	11	6,4	M8
24	21	180	B	6,8	156	11	6,4	M8
24	21	200	B	6,8	176	11	6,4	M8
24	21	220	B	6,8	196	11	6,4	M8



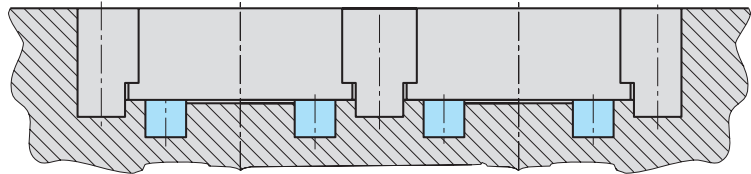
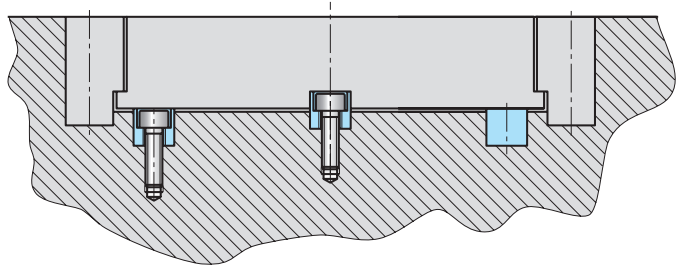
INGENIERIA DE MOLDES Y TROQUELES, S. A.

STRACK[®]
NORMALIEN

Entformungselemente - direkt / Demoulding elements - direct / Éléments de démoulage - directs

www.strack.de

Z 4248-

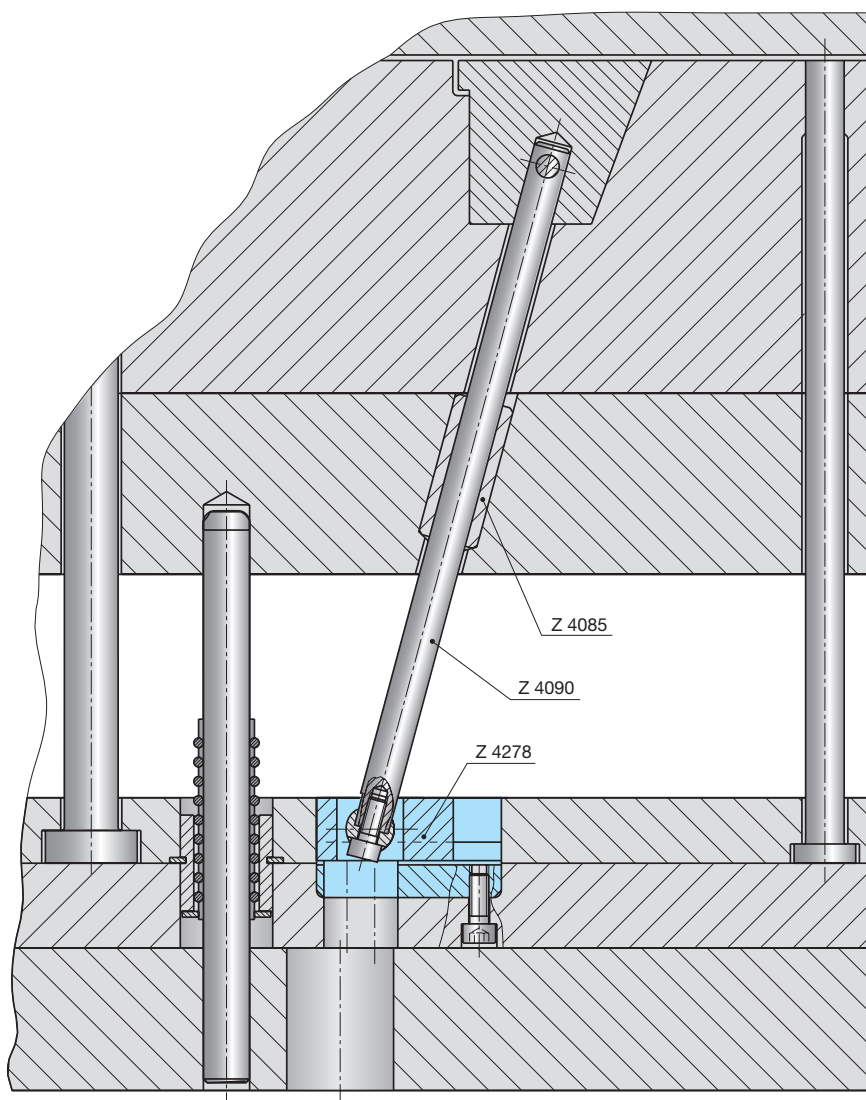


Z 4278-

Einbaubeispiel

Example of installation

Exemple de montage



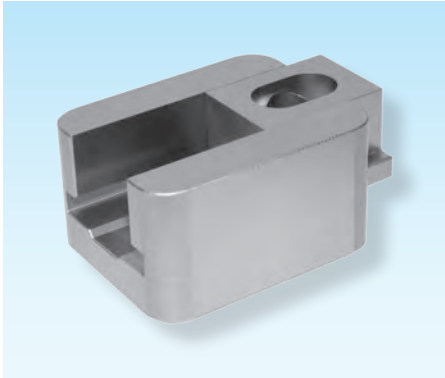
5



Schrägschieber mit Gelenk

Slanted slides with articulation

Tiroirs obliques avec articulation



Z 4278-

Mat.: 1.2842/58 +2HRC
Mat.: 1.2343/52 +2HRC

Z 4278-D1



5

NEU

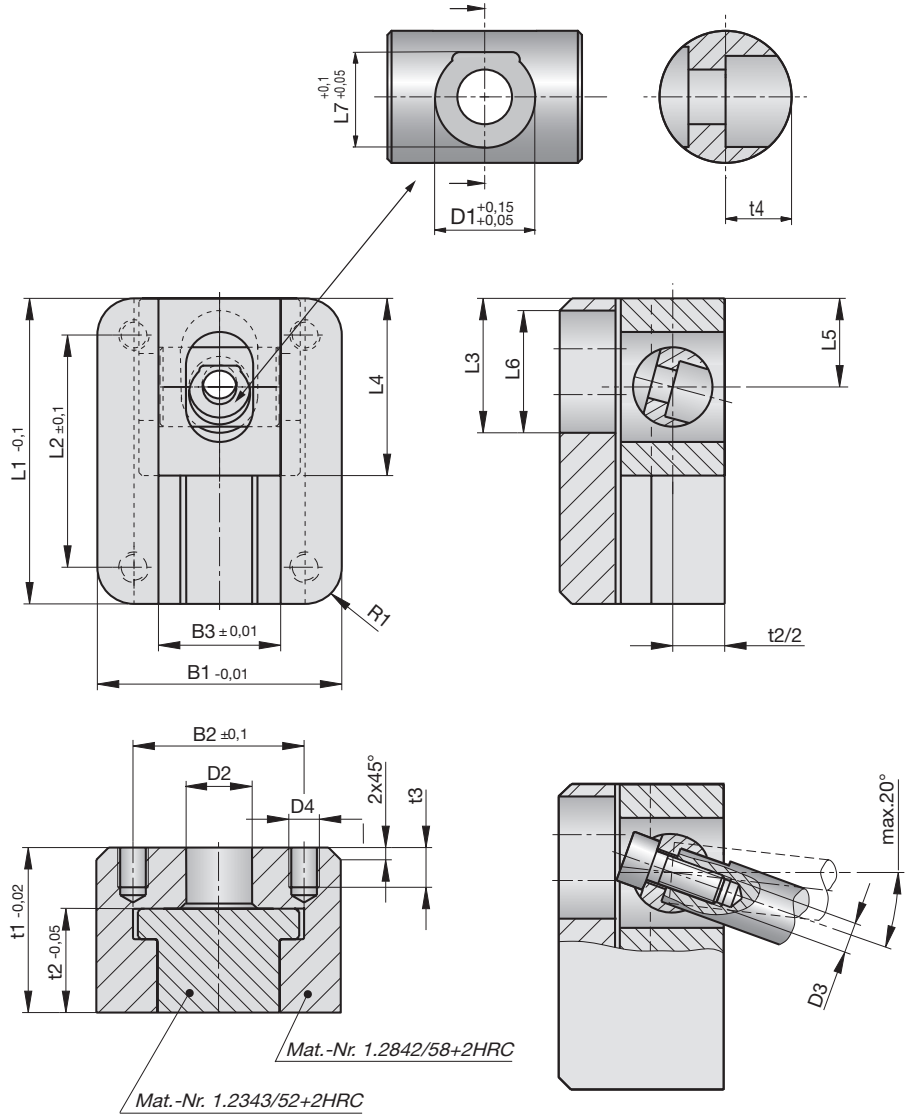
mit verbesserter Verdrehsicherung,
Ersatz für **Z 4277**

NEW

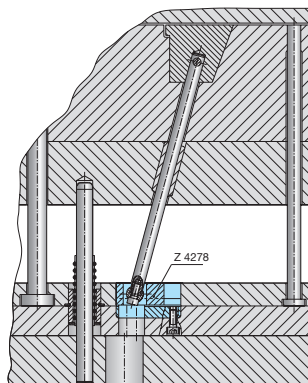
with improved anti-twist protection,
replacement for **Z 4277**

NUOVEAU

avec dispositif anti-torsion amélioré,
remplacement de **Z 4277**



D1	B1	B2	B3	f1	t2	t3	L1	L2	L3	L4	L5	L6	D2	D3	D4	R1	t4	L7
10	40	28	20	27	17	6,5	50	38	22	29	14,5	20	12,5	M5	M5	6	6,5	9
12	48	34	24	34	22	8,0	60	46	24	34	17,0	21	12,5	M6	M6	7	8	11
16	64	44	32	45	29	10,0	80	60	31	46	23,0	28	16,5	M8	M8	10	11	14,5





INGENIERIA DE MOLDES Y TROQUELES, S. A.

STRACK[®]
NORMALIEN

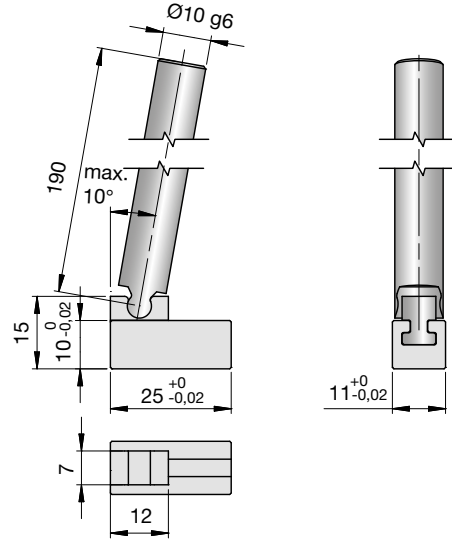
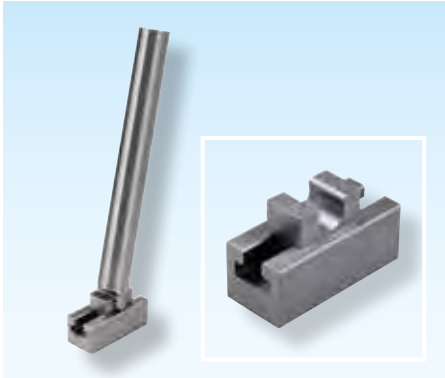
Entformungselemente - direkt / Demoulding elements - direct / Éléments de démoulage - directs

www.strack.de

Minischieber

Mini-Slide unit

Mini-Tiroir unité



Z 4279-

Mat.: 1.2162/
60 +2HRC

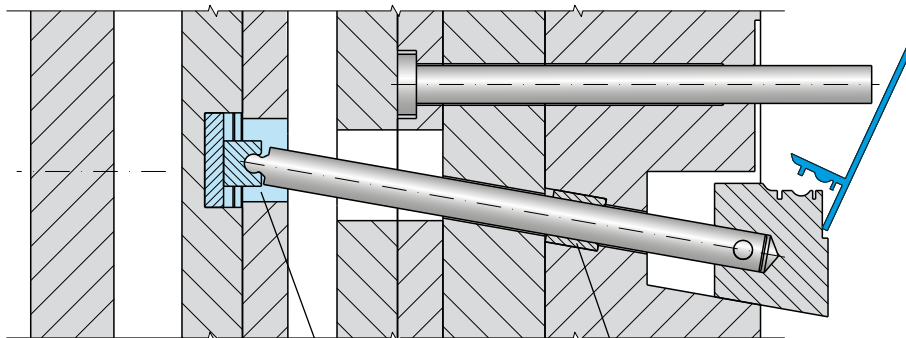
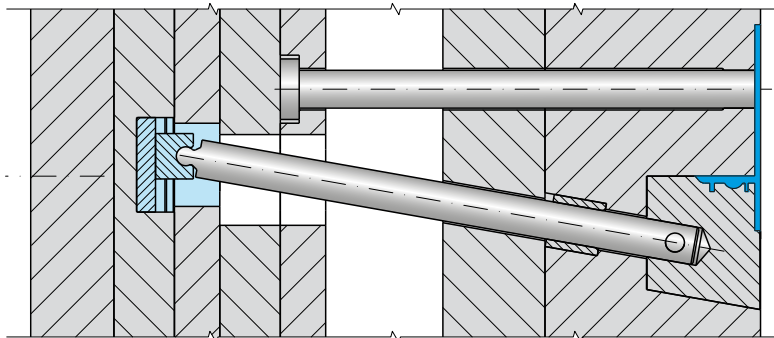
Z 4279-D



D

10

5



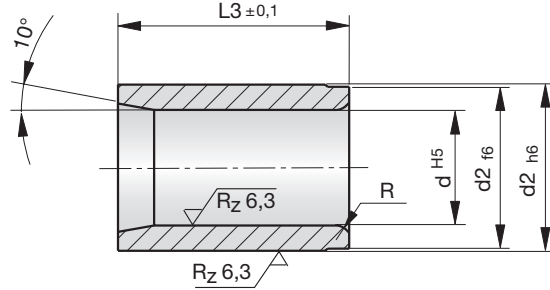
Z 4279

Z 4085

Gleitführungsbuchsen

Guide bushes

Bagues pour guidage lisse



Z 4085-

Mat.: Ampco 18/
HB30 = 193
> 300 °C

Z 4085-d-L3

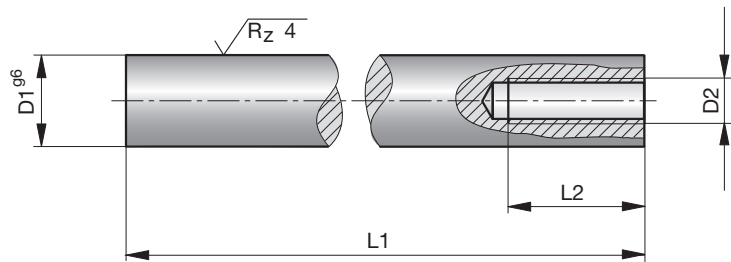
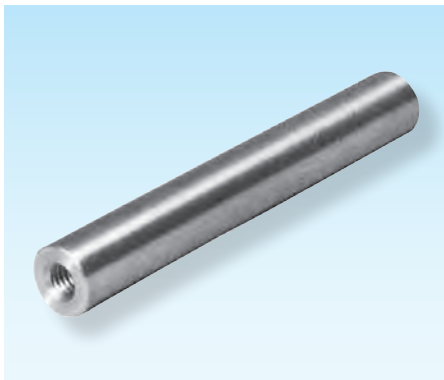


d	L3	d2	R
10	14	14	1,0
10	20	14	1,0
12	20	17	1,5
12	25	17	1,5
16	25	22	2,0
16	32	22	2,0

Schrägsäulen

Angle pins

Doigts incliné



Z 4090-

Mat.: 1.7131/
58 +4HRC

Z 4090-D1



D1	L1	L2	D2
10	180	15	M5
12	210	18	M6
16	250	22	M8



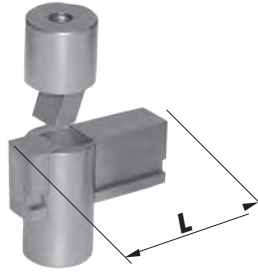
Schiebereinheiten

Slide units

Unités de tiroirs



Z 4290-0

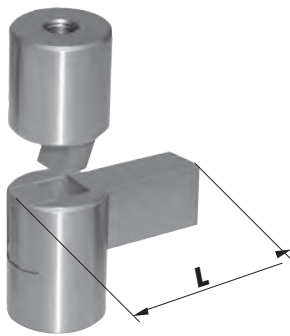


Z 4290-0-L



Z 4290-1
Z 4290-2

Seite / page 5.32



Z 4290-1-L
Z 4290-2-L

Längere Schieber

Maß L in Bestellung angeben,
z.B. Z 4290-2-60.

Lieferung ohne d2/M und t2!

Preise und Lieferzeiten auf
Anfrage.

Longer slides

Indicate dimension L in the order,
for example: Z 4290-2-60.

Delivery without d2/M and t2!

Prices and delivery times on
demand.

Tiroirs plus longs

Indiquez dimension L dans la
commande, par exemple:

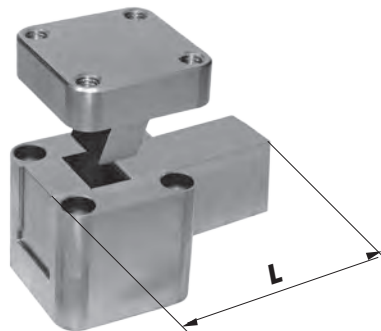
Z 4290-2-60.

Livraison sans d2/M et t2!

Prix et délais de livraison sur
demande.



Z 4294-0
Z 4294-1

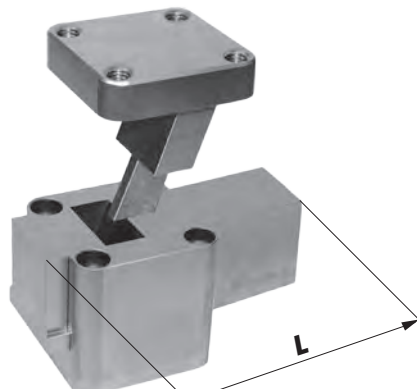


Z 4294-0-L
Z 4294-1-L



Z 4294-2

Seite / page 5.38



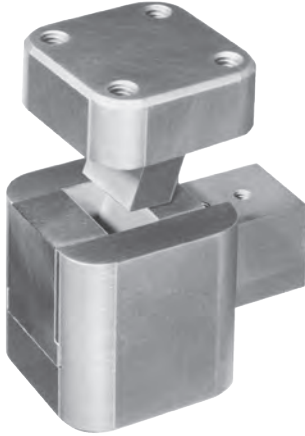
Z 4294-2-L



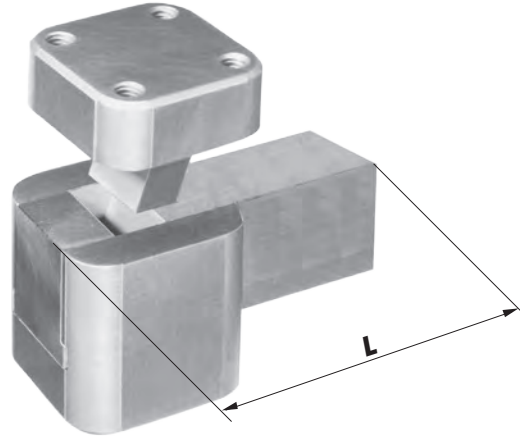
Schiebereinheiten

Slide units

Unités de tiroirs

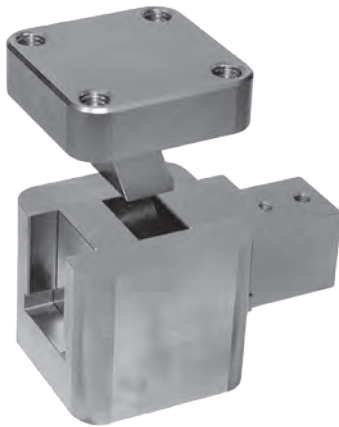


Z 4295-1
Z 4295-2

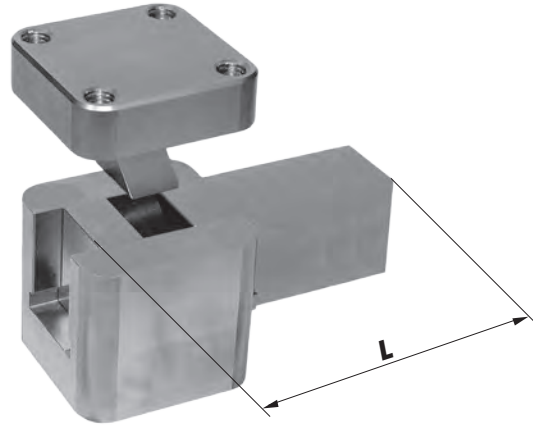


Z 4295-1-L
Z 4295-2-L

Seite / page 5.40

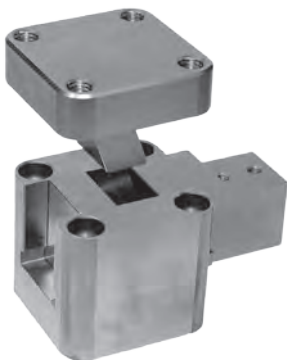


Z 4296-1
Z 4296-2

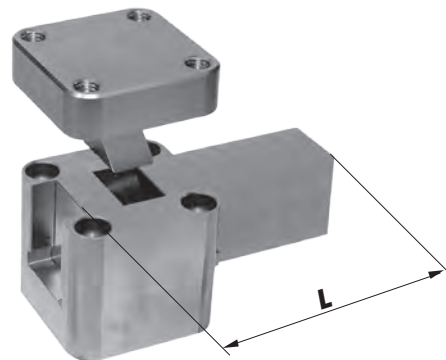


Z 4296-1-L
Z 4296-2-L

Seite / page 5.41



Z 4298-0
Z 4298-1



Z 4298-0-L
Z 4298-1-L

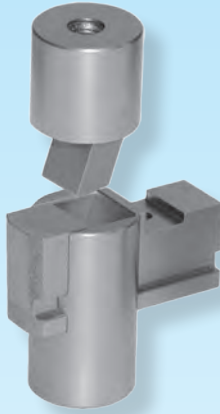
Seite / page 5.42



Schiebereinheiten

Slide units

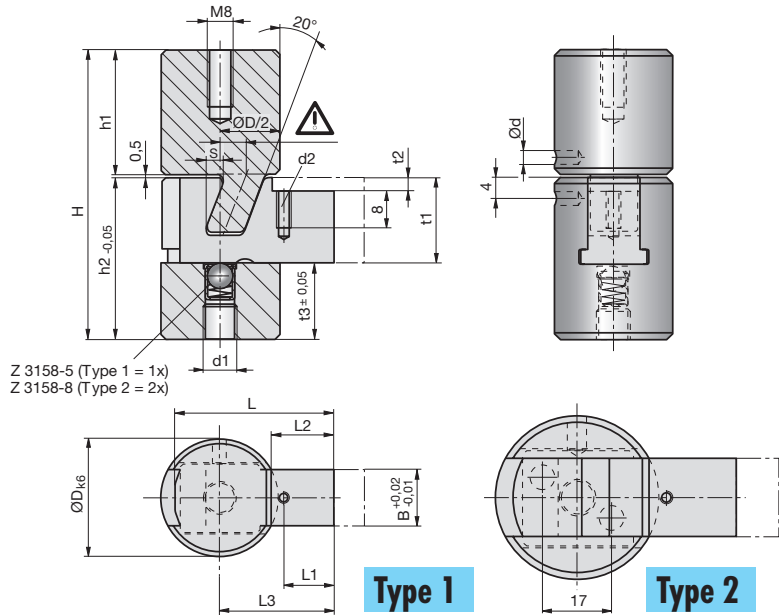
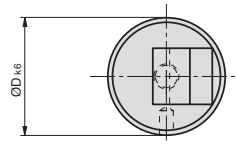
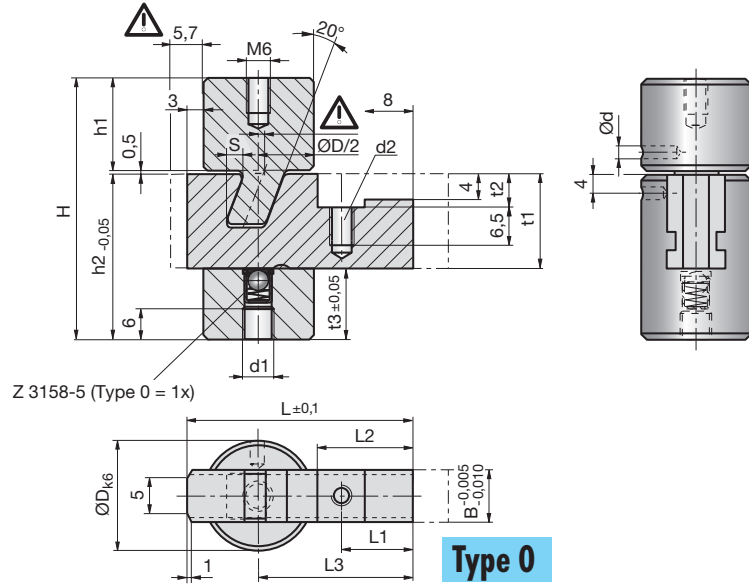
Unités de tiroirs



Type 0



Type 1
Type 2



Z 4290-

Mat.: 1.2343/
52HRC



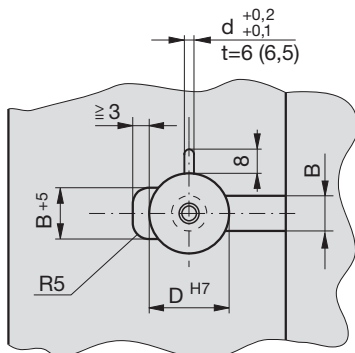
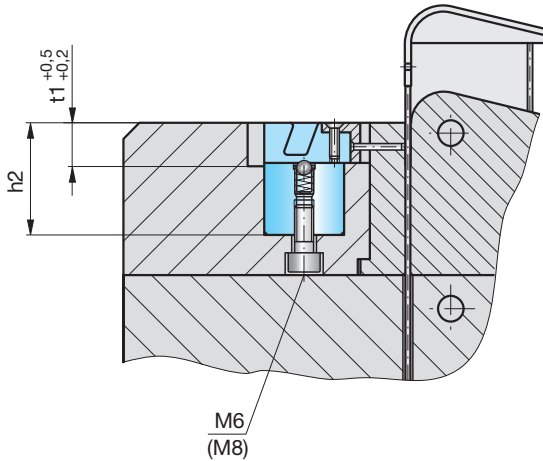
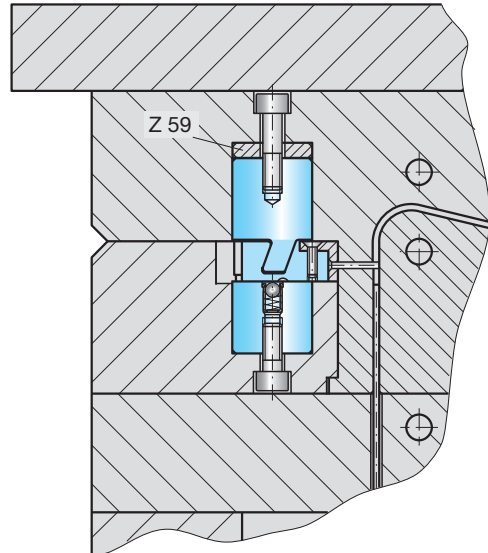
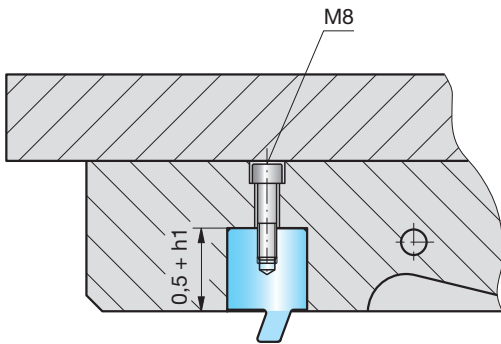
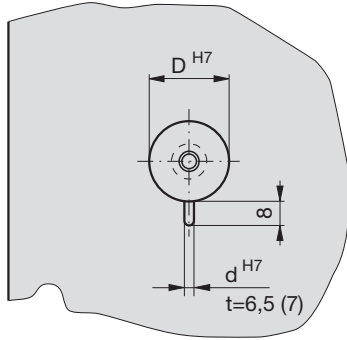
Z 4290-Type



Type	D	B	S	H	h1	h2	t1	t2	t3	L	L1	L2	L3	d	d1	d2
0	16	10	2,7	44,0	15,0	28,5	16	6,0	12,5	36,0	12,0	16,0	25,0	3	M6	M4
1	25	11	3,4	61,5	26,5	34,5	18	2,5	16,5	32,8	10,8	13,9	24,2	3	M6	M3
2	40	22	6,4	60,5	20,0	40,0	28	8,0	12,0	50,0	8,0	20,0	37,0	4	M8	M5



Z 4290-



Längere Schieber

Maß L in Bestellung angeben, z.B. Z 4290-2-60.
Lieferung ohne d2 und t2!

Longer slides

Indicate dimension L in the order, for example:
Z 4290-2-60.
Delivery without d2 and t2!

Tiroirs plus longs

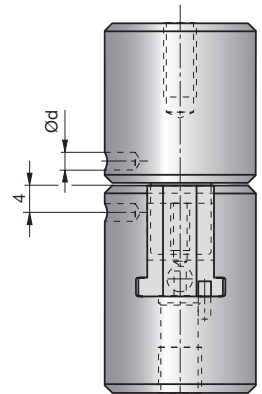
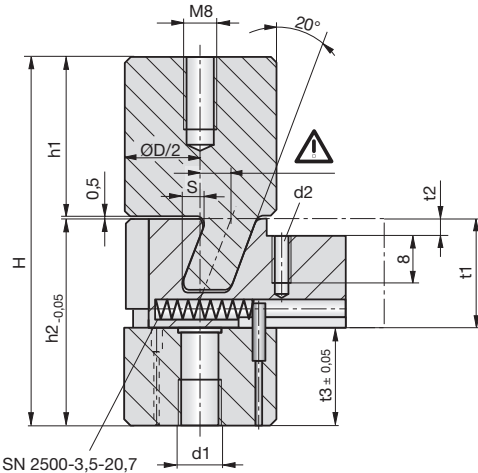
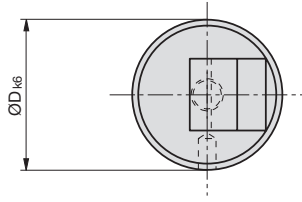
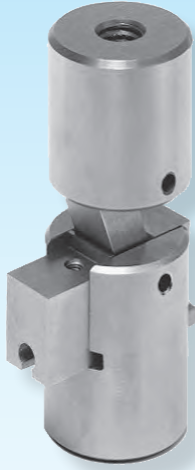
Indiquez dimension L dans la commande,
par exemple: Z 4290-2-60.
Livraison sans d2 et t2!



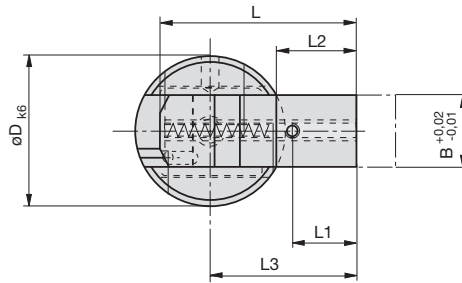
Schiebereinheiten

Slide units

Unités de tiroirs



Type 1: SN 2500-3,5-20,7
Type 2: SN 2500-4,63-29



5

Z 4292-

Mat.: 1.2343/
52HRC

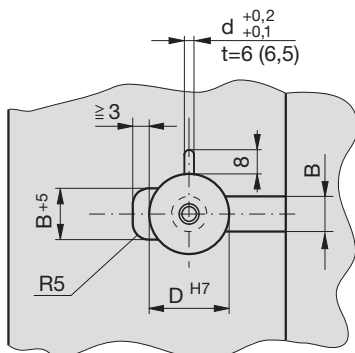
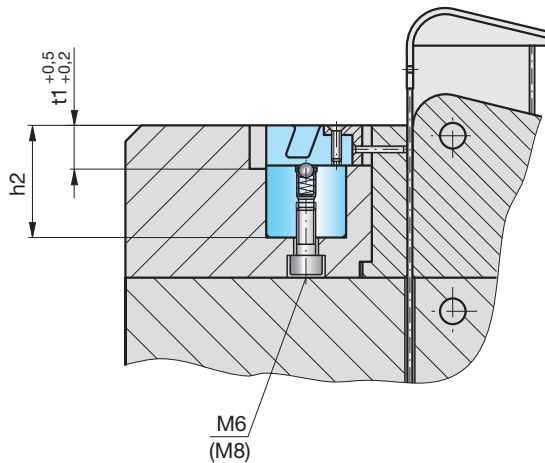
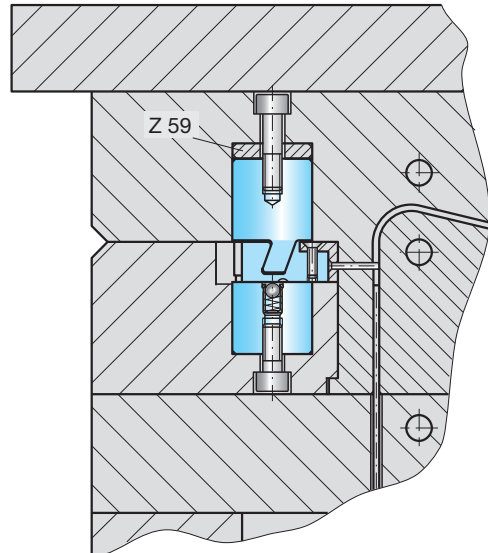
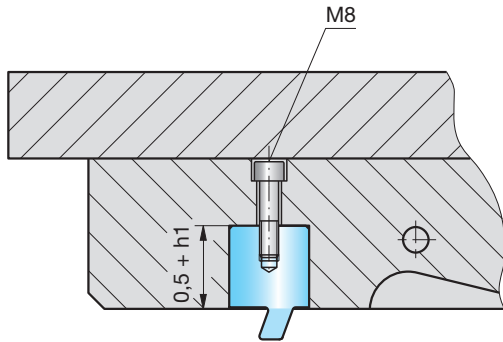
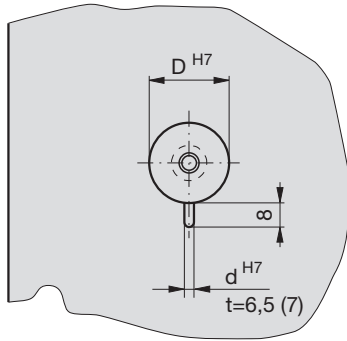
Z 4292-Type



Type	D	B	S	H	h1	h2	t1	t2	t3	L	L1	L2	L3	d	d1	d2
1	25	11	3,4	61,5	26,5	34,5	18	2,5	16,5	32,8	10,8	13,9	24,2	3	M6	M3
2	40	22	6,4	60,5	20,0	40,0	28	8,0	12,0	50,0	8,0	20,0	37,0	4	M8	M5



Z 4292-

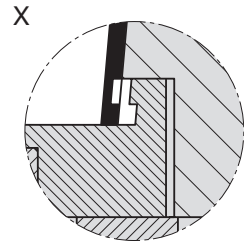
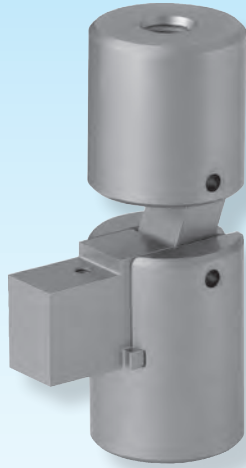




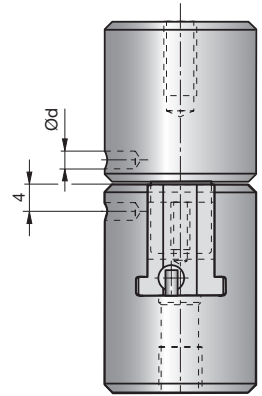
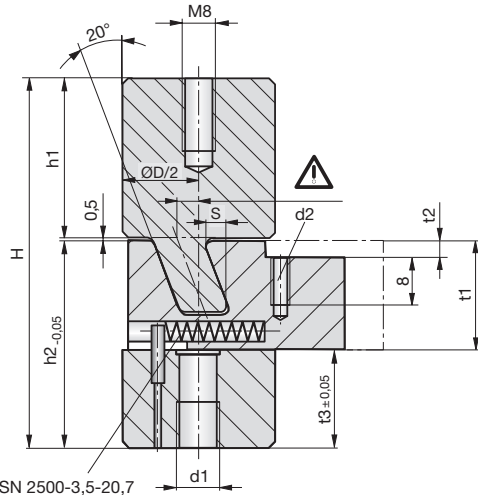
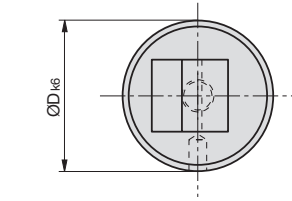
Schiebereinheiten

Slide units

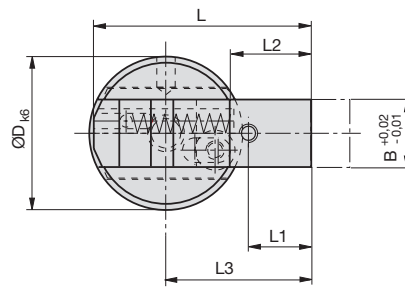
Unités de tiroirs



Schiebereinheit Z 4293 für den Einsatz bei innenliegenden Hinterschnidungen.
Slide unit Z 4293 for use with inner undercuts.
Unité de tiroir Z 4293 pour les pièces à contre-dépouilles intérieures.



Type 1: SN 2500-3,5-20,7
Type 2: SN 2500-4,63-29



5

Z 4293-

Mat.: 1.2343/
52HRC

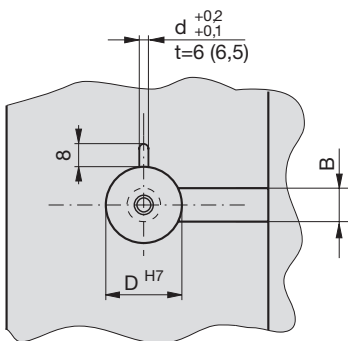
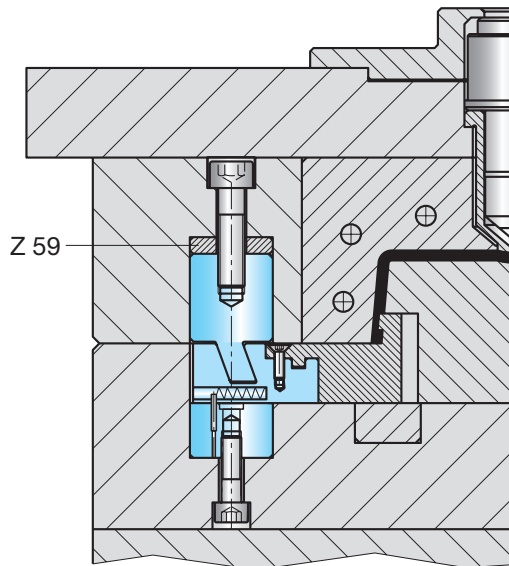
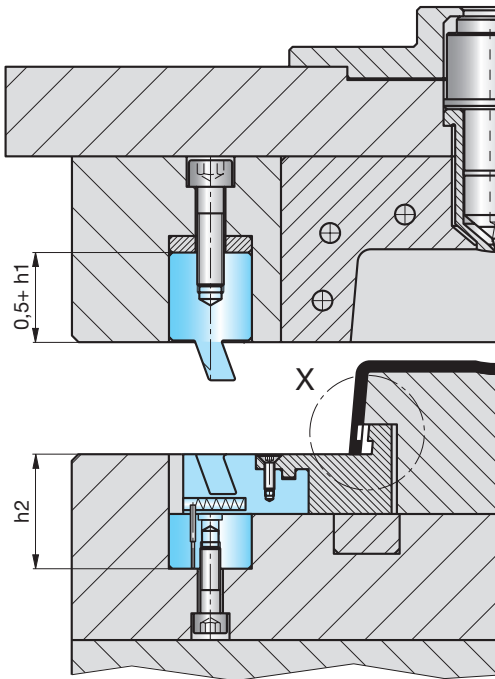
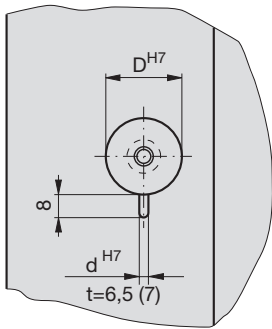
Z 4293-Type



Type	D	B	S	H	h1	h2	t1	t2	t3	L	L1	L2	L3	d	d1	d2
1	25	11	3,4	61,5	26,5	34,5	18	2,5	16,5	36,0	10,8	13,9	24,2	3	M6	M3
2	40	22	6,4	60,5	20,0	40,0	28	8,0	12,0	56,5	8,0	20,0	37,0	4	M8	M5



Z 4293-



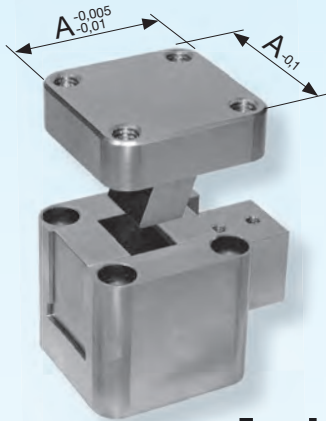
Schiebereinheiten

Slide units

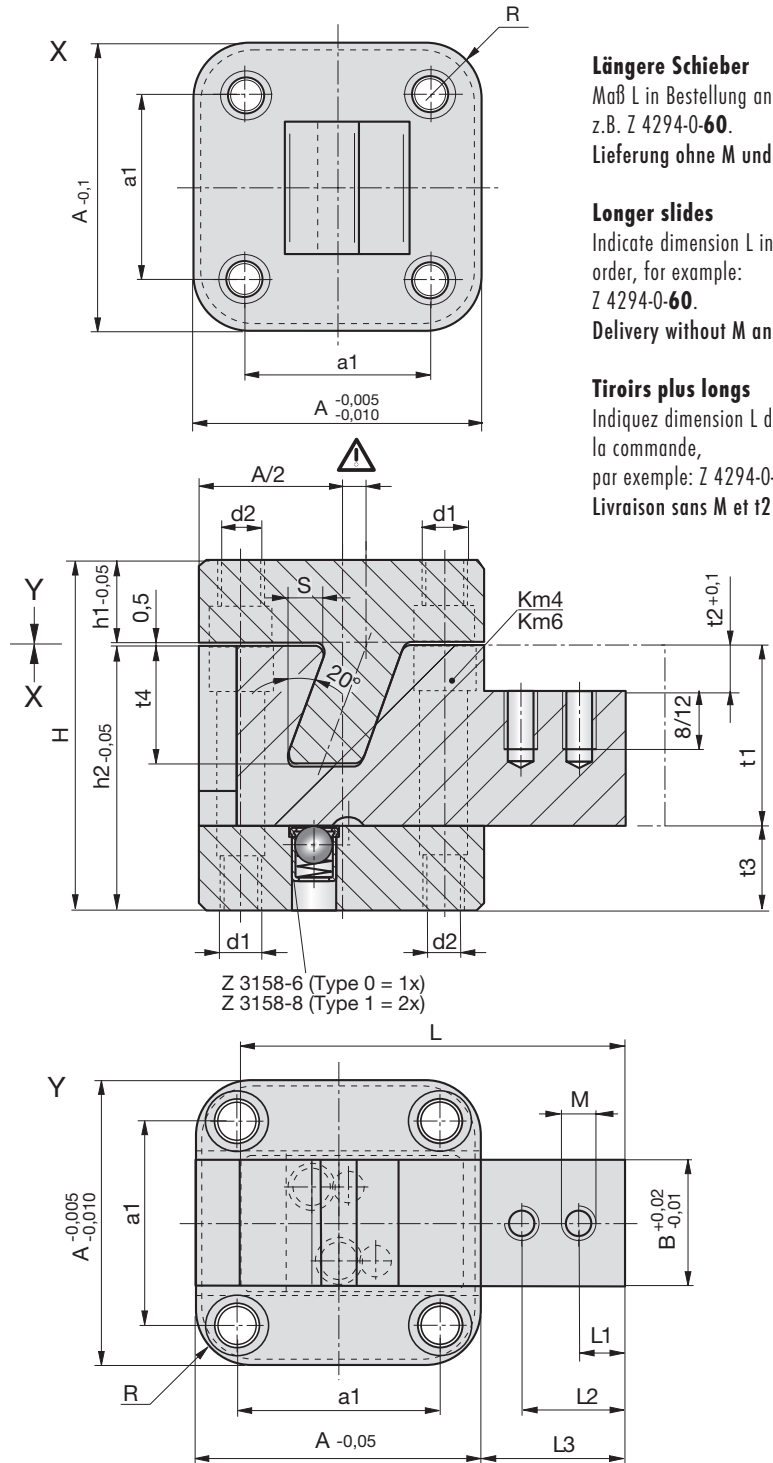
Unités de tiroirs



Type 0



Type 1



Längere Schieber

Maß L in Bestellung angeben, z.B. Z 4294-0-60.
Lieferung ohne M und t2!

Longer slides

Indicate dimension L in the order, for example: Z 4294-0-60.
Delivery without M and t2!

Tiroirs plus longs

Indiquez dimension L dans la commande, par exemple: Z 4294-0-60.
Livraison sans M et t2!

Z 4294-

Mat.: 1.2343/
52HRC

Z 4294-Type



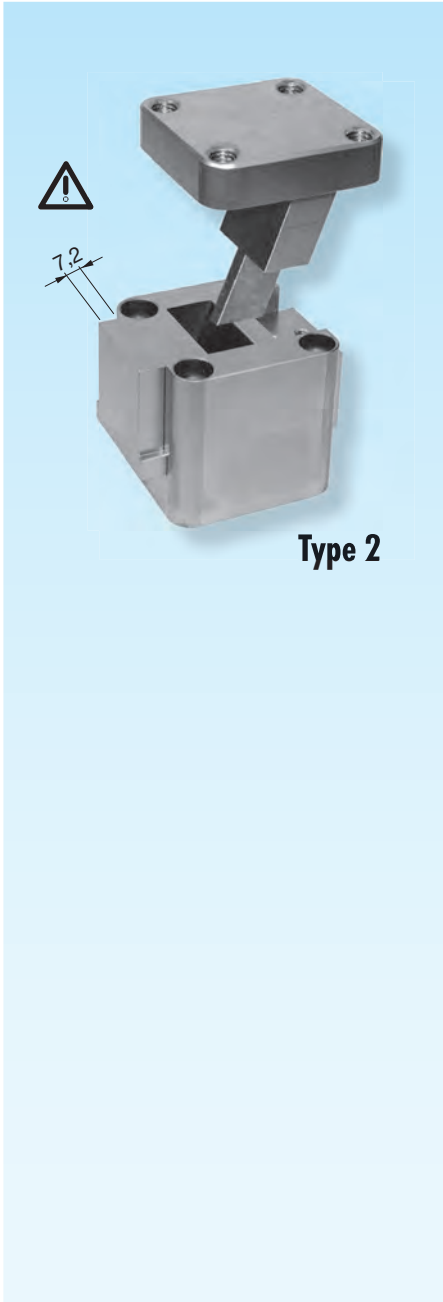
Type	A	B	a1	S	L	L1	L2	L3	H	h1	h2	t1	t2	t3	t4	M	d1	d2	R
0	32	12	22	4,9	46,8	5	15	20	50	14,5	35	23	6	12	16	M4	M5	4,1	6
1	50	22	36	6,7	66,8	6	18	25	60	14,5	45	30	6	15	21,5	M5	M8	6,5	8



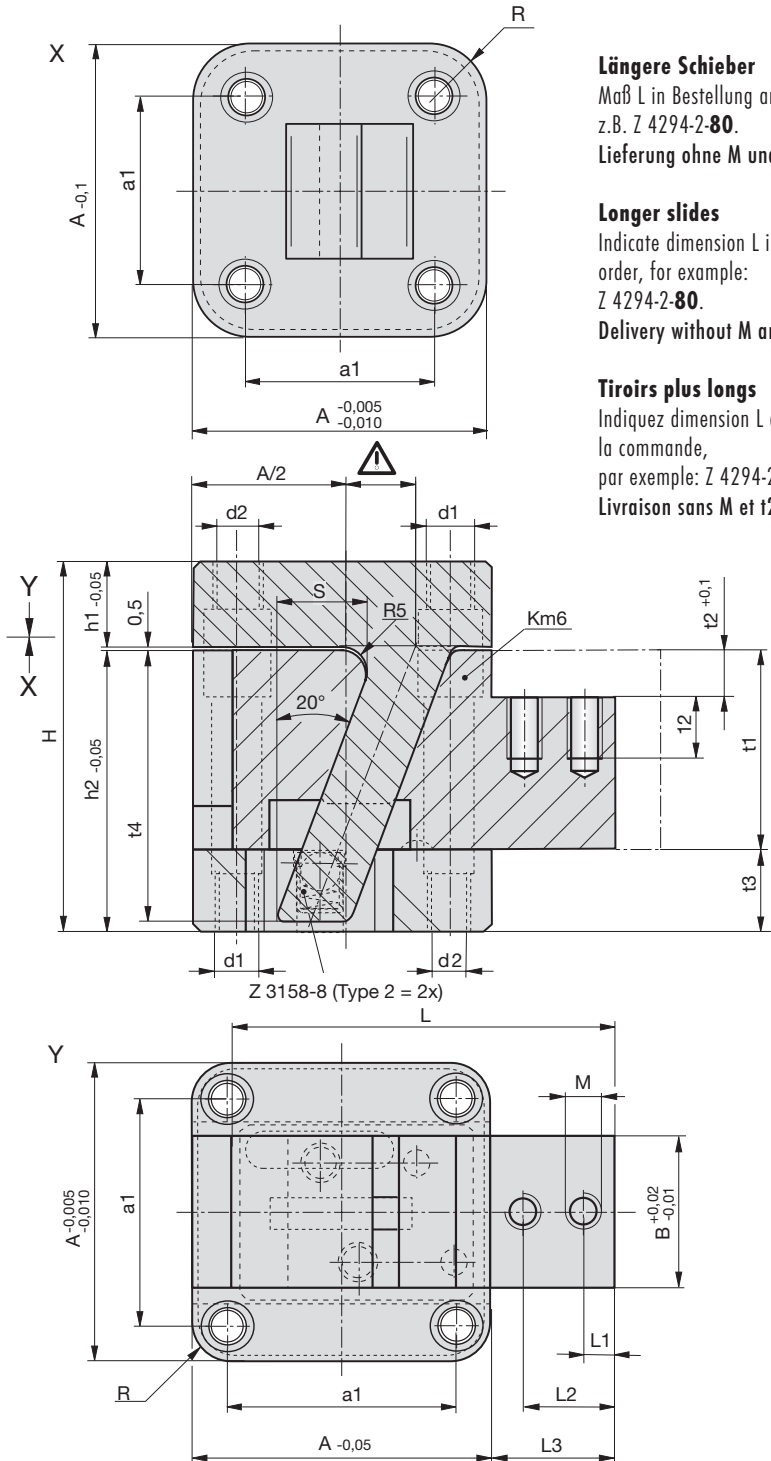
Schiebereinheiten

Slide units

Unités de tiroirs



Type 2



Längere Schieber

Maß L in Bestellung angeben,
z.B. Z 4294-2-80.
Lieferung ohne M und t2!

Longer slides

Indicate dimension L in the
order, for example:
Z 4294-2-80.
Delivery without M and t2!

Tiroirs plus longs

Indiquez dimension L dans
la commande,
par exemple: Z 4294-2-80.
Livraison sans M et t2!

Z 4294-

Mat.: 1.2343/
52HRC

Z 4294-Type

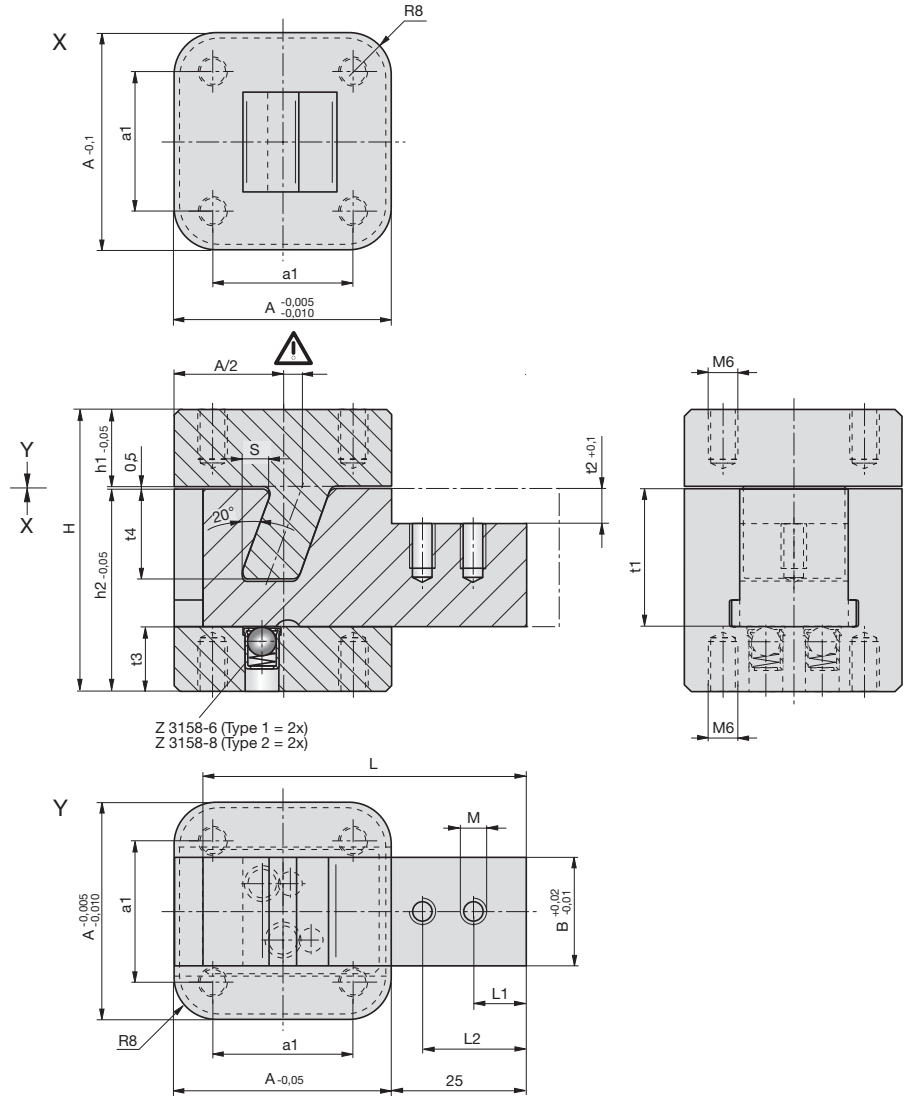
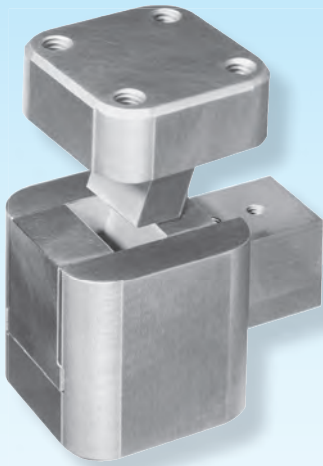


Type	A	B	a1	S	L	L1	L2	L3	H	h1	h2	t1	t2	t3	t4	M	d1	d2	R
2	60	31	46	17,3	74,8	6	18	25	72	14,5	57	40	10	17	55	M5	M8	6,5	8

Schiebereinheiten

Slide units


Unités de tiroirs



5

Z 4295-

Mat.: 1.2343/
52HRC

 Z 4295-Type



Type	A	B	a1	S	L	L1	L2	H	h1	h2	t1	t2	t3	t4	M
1	40	20	26	4,9	59,8	10	20	52	14,5	37	25	6	12	16	M4
2	60	35	46	9,9	74,8	6	18	72	14,5	57	40	10	17	30	M5

Längere Schieber

Maß L in Bestellung angeben, z.B. Z 4295-2-80.
Lieferung ohne M und t2!

Longer slides

Indicate dimension L in the order, for example:
Z 4295-2-80.
Delivery without M and t2!

Tiroirs plus longs

Indiquez dimension L dans la commande,
par exemple: Z 4295-2-80.
Livraison sans M et t2!



Schiebereinheiten

Slide units

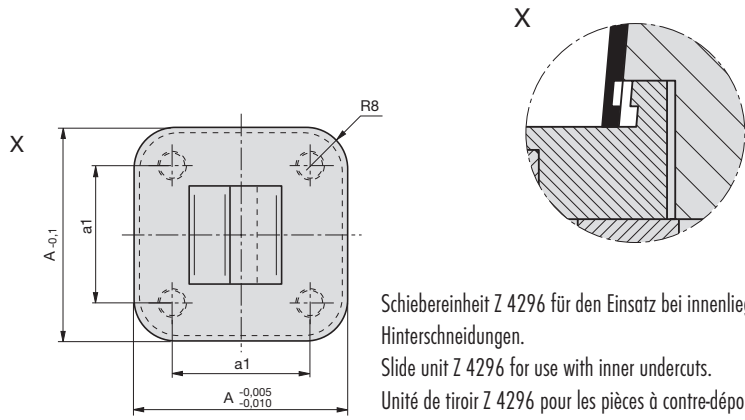
Unités de tiroirs



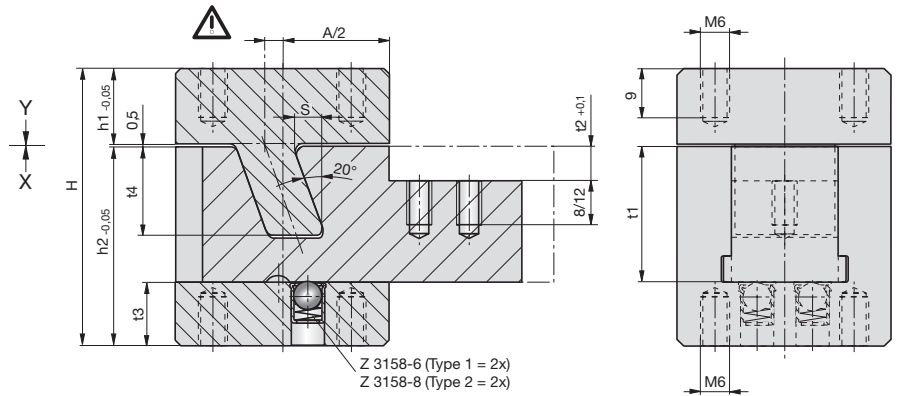
Z 4296-

Mat.: 1.2343/
52HRC

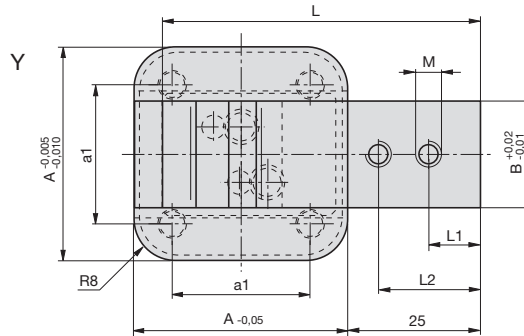
Z 4296-Type



Schiebereinheit Z 4296 für den Einsatz bei innenliegenden Hinterschnitten.
Slide unit Z 4296 for use with inner undercuts.
Unité de tiroir Z 4296 pour les pièces à contre-dépouilles intérieures.



Z 3158-6 (Type 1 = 2x)
Z 3158-8 (Type 2 = 2x)



5

Type	A	B	a1	S	L	L1	L2	H	h1	h2	t1	t2	t3	t4	M
1	40	20	26	4,9	59,8	10	20	52	14,5	37	25	6	12	16	M4
2	60	35	46	9,9	84,0	6	18	72	14,5	57	40	10	17	30	M5

Längere Schieber

Maß L in Bestellung angeben, z.B. Z 4296-2-90.
Lieferung ohne M und t2!

Longer slides

Indicate dimension L in the order, for example:
Z 4296-2-90.
Delivery without M and t2!

Tiroirs plus longs

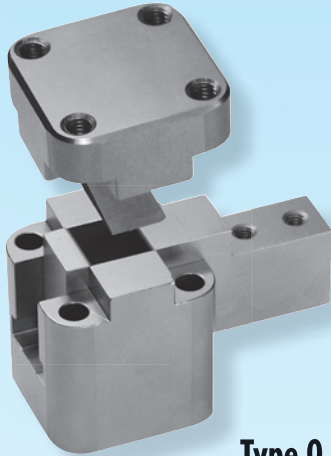
Indiquez dimension L dans la commande,
par exemple: Z 4296-2-90.
Livraison sans M et t2!



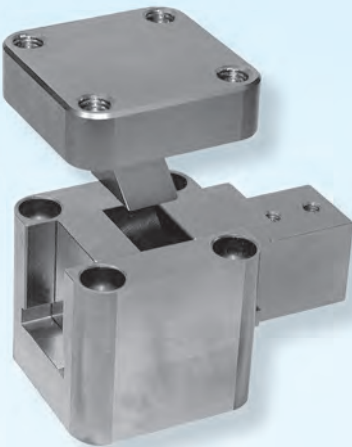
Schiebereinheiten

Slide units

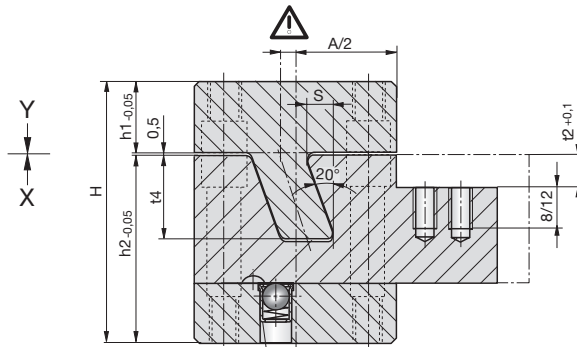
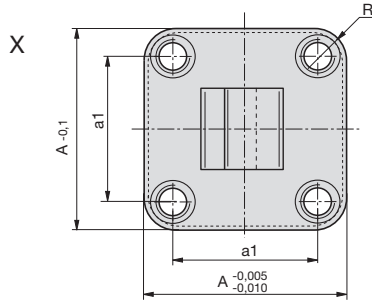
Unités de tiroirs



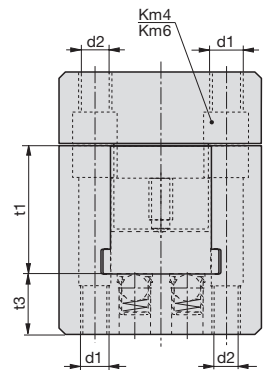
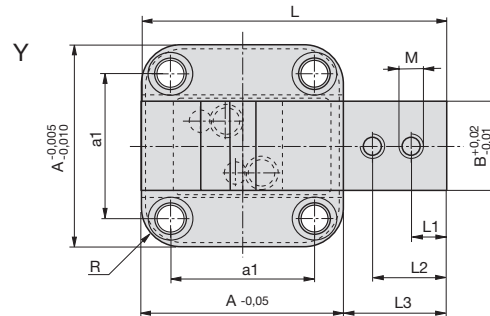
Type 0



Type 1



Z 3158-6 (Type 0 = 1x)
Z 3158-8 (Type 1 = 2x)



Längere Schieber

Maß L in Bestellung angeben, z.B. Z 4298-1-80.

Lieferung ohne M und t2!

Longer slides

Indicate dimension L in the order, for example: Z 4298-1-80.

Delivery without M and t2!

Tiroirs plus longs

Indiquez dimension L dans la commande, par exemple: Z 4298-1-80.

Livraison sans M et t2!

Z 4298-

Mat.: 1.2343/
52HRC

Z 4298-Type



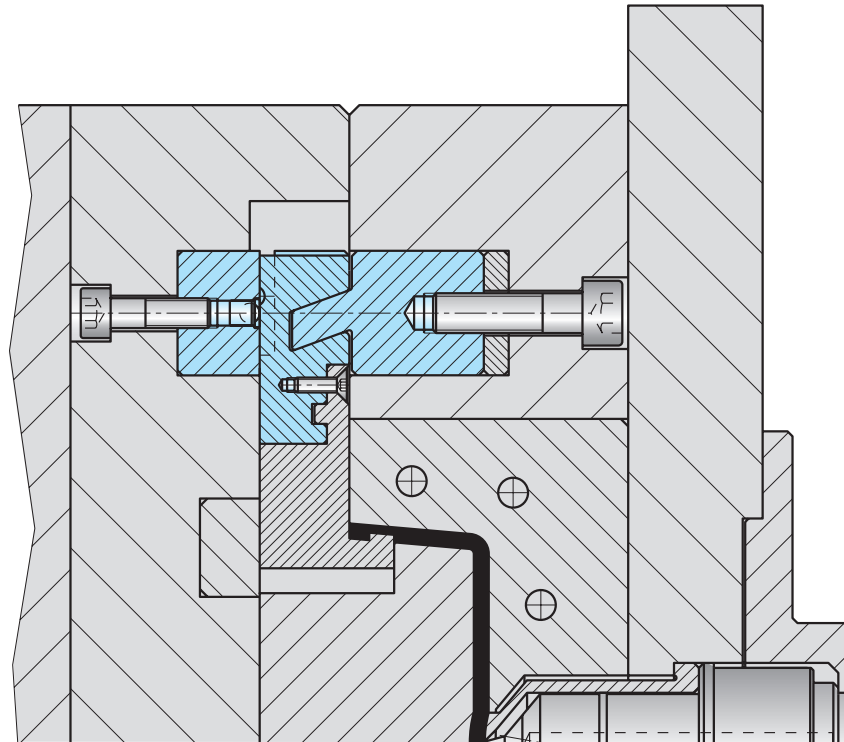
Type	A	B	a1	S	L	L1	L2	L3	H	h1	h2	t1	t2	t3	t4	M	d1	d2	R
0	32	12	22	4,9	51,5	5	15	20	50	14,5	35	23	6	12	16	M4	M5	4,1	6
1	50	22	36	6,7	74,5	6	18	25	60	14,5	45	30	6	15	21,5	M5	M8	6,5	8

Z 4293- ... Z 4298-

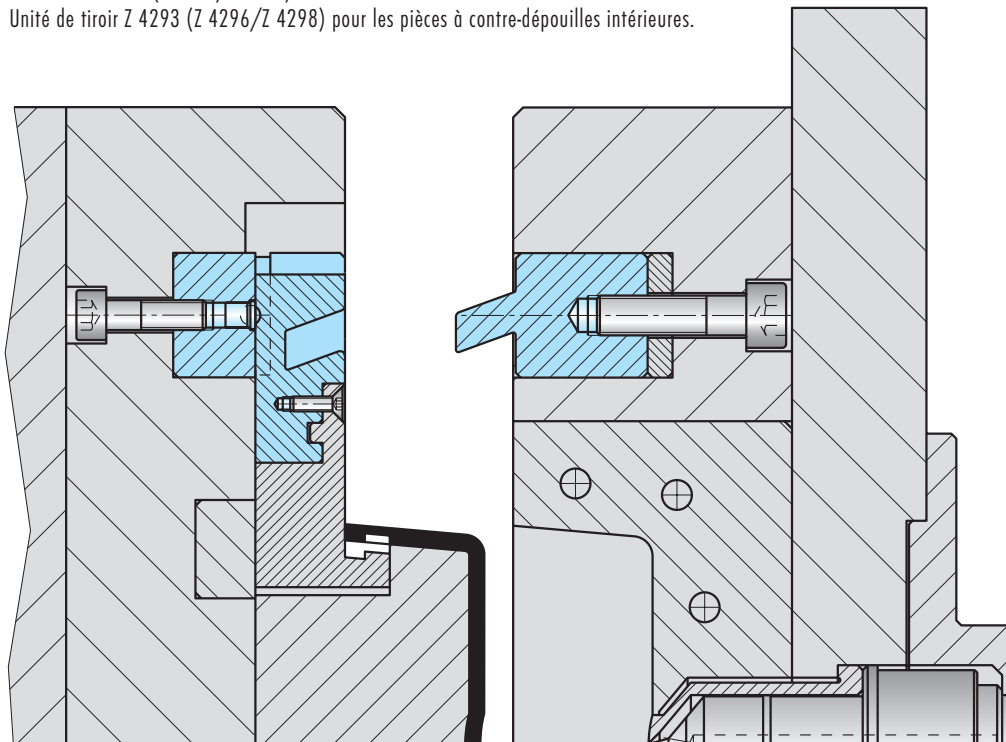
Konstruktionsbeispiele

Examples of construction

Exemples d'application



Schiebereinheit Z 4293 (Z 4296/Z 4298) für den Einsatz bei innenliegenden Hinterschnidungen.
 Slide unit Z 4293 (Z 4296/Z 4298) for use with inner undercuts.
 Unité de tiroir Z 4293 (Z 4296/Z 4298) pour les pièces à contre-dépouilles intérieures.





INGENIERIA DE MOLDES Y TROQUELES, S. A.

STRACK®
NORMALIEN

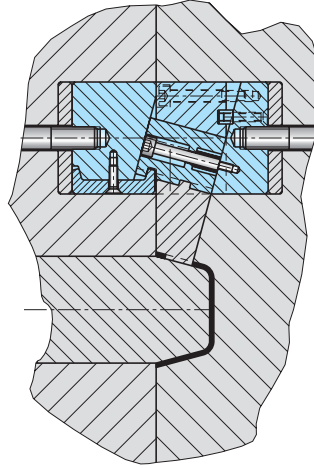
Entformungselemente - direkt / Demoulding elements - direct / Éléments de démoulage - directs

www.strack.de

Schrägschiebereinheiten in Sonderausführung

Specially designed slanted slide units

Unités de tiroirs obliques - exécution spéciale

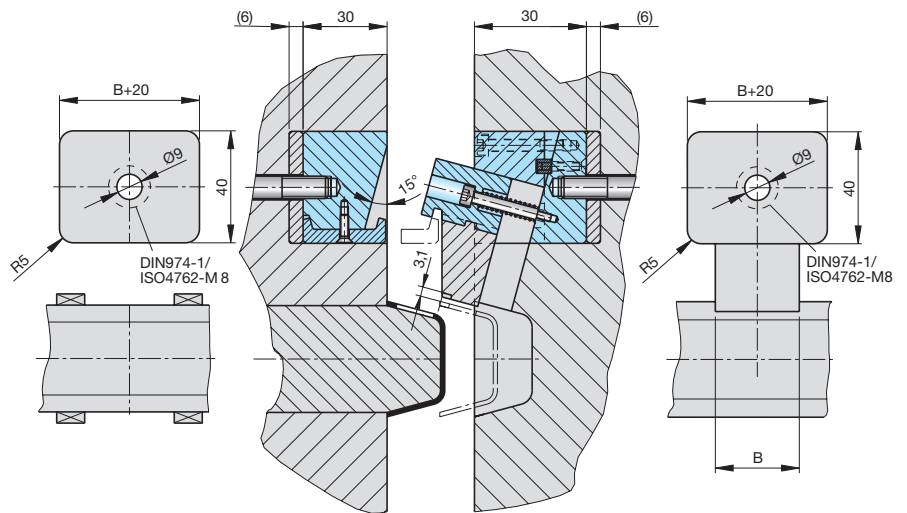


5

Z 4297-

Mat.: 1.2343/
52HRC

 **Z 4297-B**



B

30

50

70