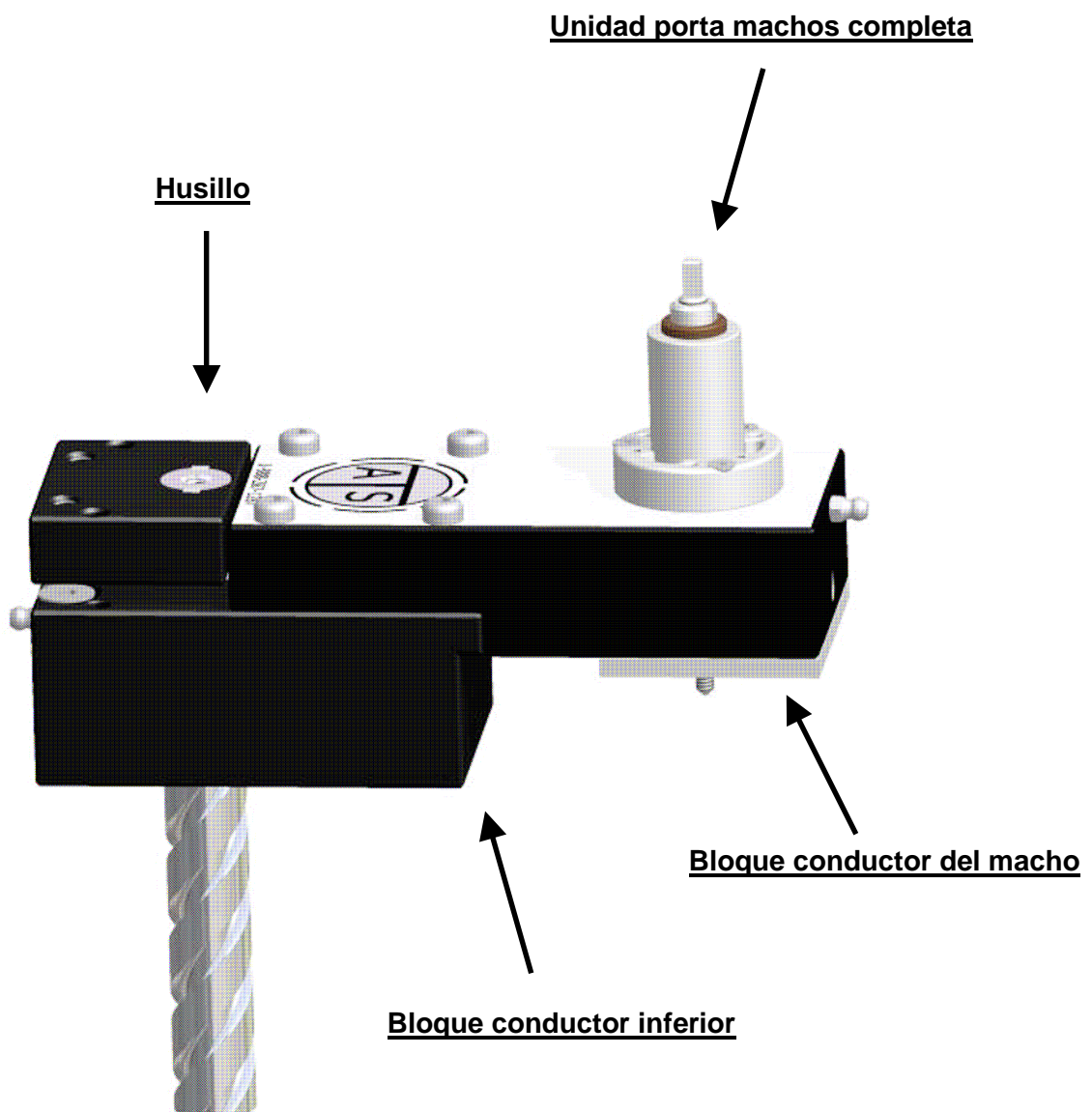


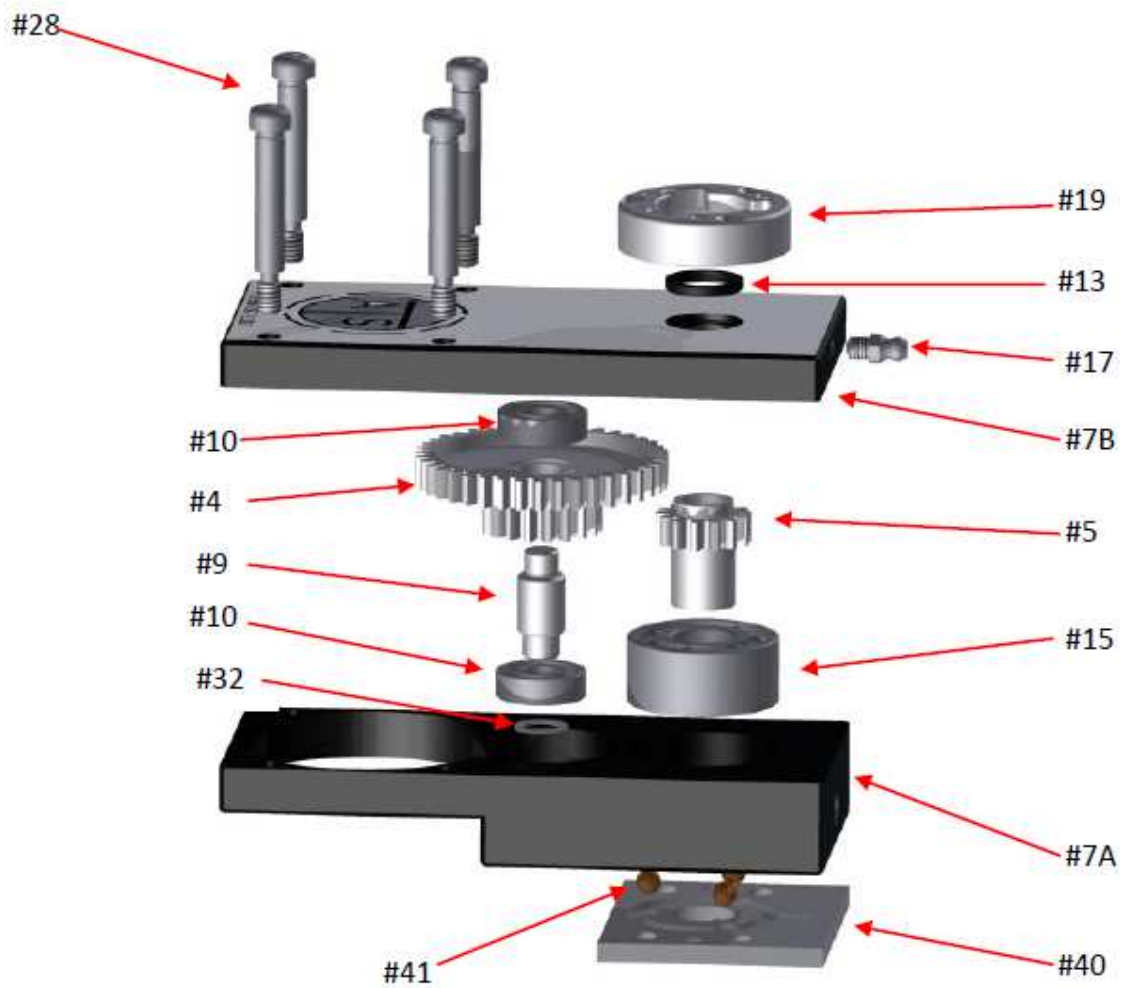


UNIDAD DESCENDENTE TH25



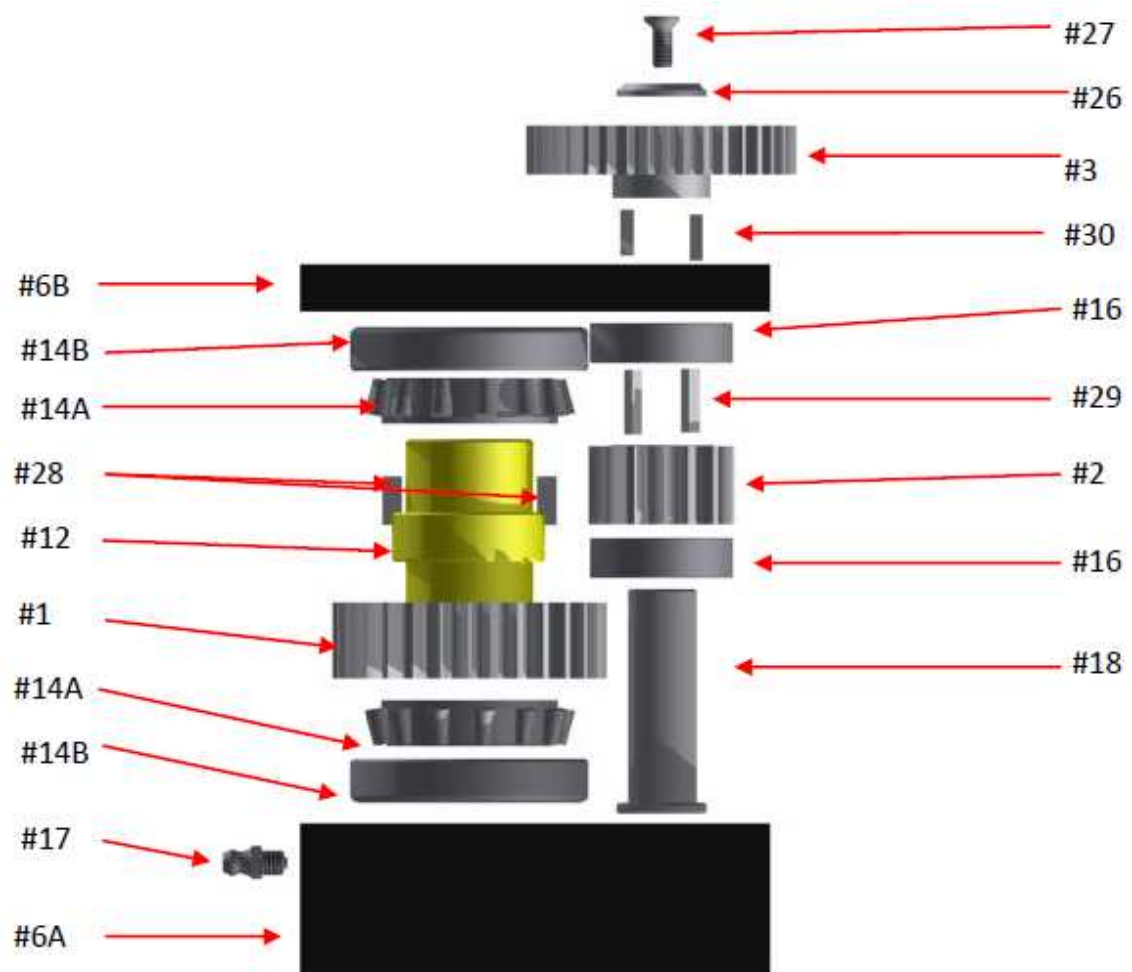


BLOQUE CONDUCTOR DEL MACHO TH25



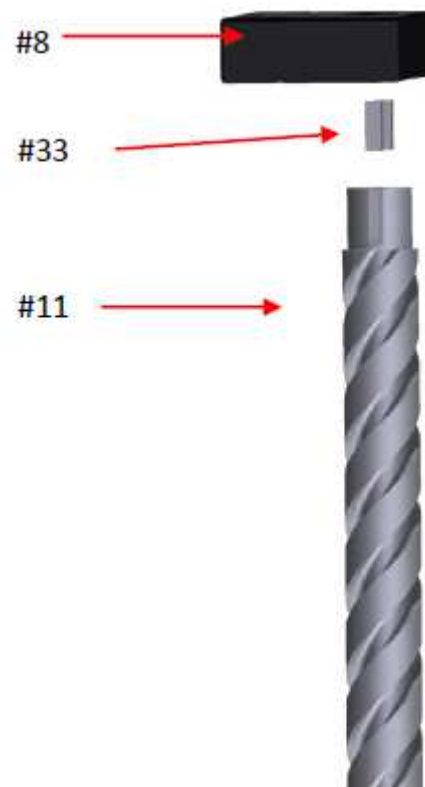


BOQUE CONDUCTOR INFERIOR TH25



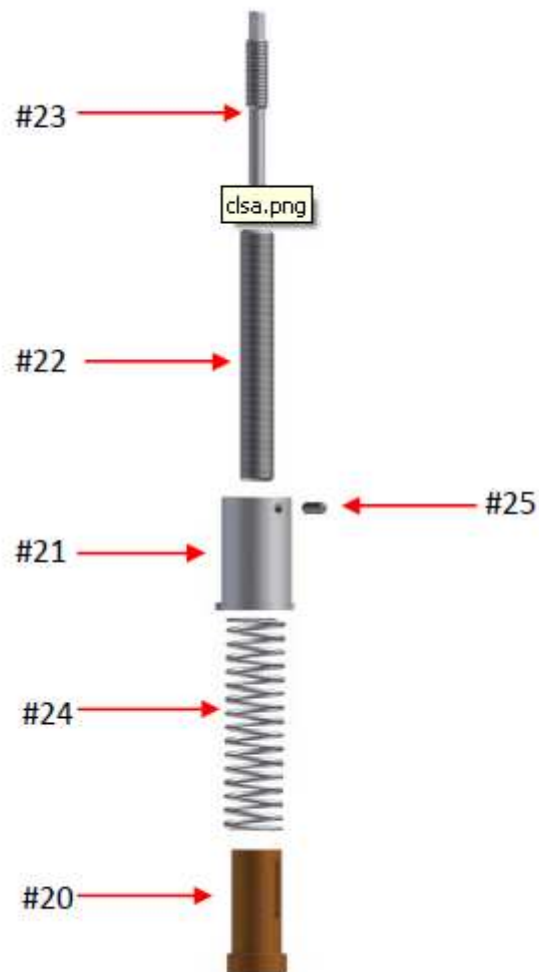


CONJUNTO DEL HUSILLO TH25





UNIDAD PORTA MACHOS TH25





INGENIERIA DE MOLDES Y TROQUELES, S. A.

Nº DE DIBUJO	CANTIDAD	DESCRIPCION	DENOMINACION ATS
1	1	GEAR	TH25.01
2	1	GEAR	TH25.02
3	1	TRANSFER SHAFT GEAR	TH25.03
4	1	GEAR COMBO	TH25.04
5	1	TAP SPINDLE DRIVE GEAR	TH25.05
6	1	BOTTOM DRIVE HOUSING	TH25.06
7A	1	TAP DRIVE HOUSE	TH25.07A
7B	1	TAP DRIVE HOUSE	TH25.07B
8	1	CAMSHAFT MOUNTING BLOCK	TH25.08
9	1	IDLER SHAFT	TH25.09
10	2	BEARING	TH25.10
11	1	CAMSHAFT	TH25.11
12	1	CAMSHAFT BUSHING	TH25.12
13	2	SEAL	TH25.13
14A	2	ROLLER BEARING	TH25.14A
14B	1	RACE BEARING	TH25.14B
15	1	BEARING	TH25.15
16	2	BEARING	TH25.16
17	1	GREASE FITTING	TH25.17
18	1	TRANSFER SHAFT	TH25.18
19	1	LEAD SCREW ASSEMBLY HOLDER	TH25.19
20	1	LEAD SCREW BUSHING	TH25.20
21	1	LEAD SCREW BUSHING GUIDE	TH25.21
22	1	LEAD SCREW	TH25.22
23	1	LEAD SCREW CHUCK	TH25.23
24	1	SPRING	TH25.24
25	1	DOG POINT SET SCREW	TH25.25
26	1	TRANSFER SHAFT WASHER	TH25.26
27	1	F.H. SOCKET CAP SCREW	TH25.27
28	4	STRIPPER BOLTS	TH25.28
29	2	1/8 KEYS	TH25.29
30	2	1/8 KEYS	TH25.30
31	2	3/16 KEYS	TH25.31
32	1	IDLER SHAFT WASHER	TH25.32
33	2	3/16 KEYS	TH25.33
34	N/A	N/A	N/A
35	N/A	N/A	N/A
36	N/A	N/A	N/A
37	N/A	N/A	N/A
38	N/A	N/A	N/A
39	N/A	N/A	N/A
40		Coolant Plate	TH25.40
41		Coolant applicator	TH25.41