

CATÁLOGO



IMT
INGENIERÍA DE MOLDES
Y TROQUELES

20
URTEAURRENA
ANIVERSARIO

WEB: www.imtsa.net EMAIL: imtsa@imtsa.net

COLUMNA / GUIDE PILLAR



C1 COLUMNA DE DOBLE DIÁMETRO
Double diameter guide pillar



C1S COLUMNA DE DOBLE DIÁMETRO CON
GUIADO
Guide pillar with shoulder



C2 COLUMNA GUÍA
Single diameter guide pillar



C3 COLUMNA DOBLE
Guide pillar with head



C4 COLUMNA LISA
Guide pillar without head



C5 COLUMNA CÓNICA
Conical guide pillar



C8 COLUMNA LISA
Smooth guide pillar



C9 COLUMNA "TIPO DIN 9833"
Guide pillar "DIN 9833 type"



C9F COLUMNA "TIPO DIN 9833"
Guide pillar "DIN 9833 type"



VW COLUMNA CON SPLIT VW
Guide pillar with split VW



CE COLUMNA EXTRAÍBLE
Demountable guide pillar

CASQUILLOS / BUSHES



B1 CASQUILLO CON VALONA
Guide bush with collar



B1S CASQUILLO CON VALONA Y
GUIADO
Guide bush with shoulder



B1B CASQUILLO CON VALONA EN
BRONCE
Bronze guide bush with collar



B2 CASQUILLO LISO
Smooth guide bush



B3 CASQUILLO CON VALONA
INTERMEDIA
Bush with shoulder



B3B CASQUILLO EN BRONCE
CON VALONA INTERMEDIA
Bronze bush with shoulder



B4 CASQUILLO LISO
Smooth bush



B4B CASQUILLO LISO DE BRONCE
Bronze smooth bush



BC CASQUILLO CENTRADOR
Centering bush

CASQUILLOS / BUSHES



B5

CASQUILLO CON VALONA Y
AGUJERO DE FIJACIÓN
Collar bush with fixing holes



**B5
CON**

CASQUILLO CÓNICO CON VALONA Y
AGUJERO DE FIJACIÓN
Collar conical bush with fixing holes



B5B

CASQUILLO CON VALONA EN
BRONCE Y AGUJERO DE FIJACIÓN
Bronze collar bush with fixing holes



BE

CASQUILLO DESMONTABLE
Demountable bush



BEB

CASQUILLO DESMONTABLE
EN BRONCE
Bronze demountable bush



BEE

CASQUILLO EXTRAÍBLE "EUROPEO"
"European" removable bush



BEEB

CASQUILLO EXTRAÍBLE "EUROPEO"
EN BRONCE
Bronze "European" removable bush



BR1

CASQUILLO GUÍA AUTOLUBRICANTE
Guide bush with graphite plugs



BR2

CASQUILLO GUÍA AUTOLUBRICANTE
Guide bush with graphite plugs

VARIOS / VARIOUS



TF

RODILLOS ROSCADOS
Threaded rods



TR

EJES RECTIFICADOS
Rectified shafts



VR

TORNILLO LIMITADOR
Cylinder head screws with rectified
body. Recessed hexagon

CC

CENTRADOR CÓNICO
Conical centering units



CCN

CENTRADOR CÓNICO
Conical centering units



AC

ANILLO DE CENTRAJE
Centering rings



C10

GUÍA INCLINADA
Inclined pin without collar

COLUMNNA / GUIDE PILLAR



ICE3 COLUMNA EXTRAÍBLE
Demountable guide pillar



ICE4 COLUMNA EXTRAÍBLE
Demountable guide pillar



IC8 COLUMNA LISA
Smooth guide pillar

CASQUILLOS / BUSHES



IBE CASQUILLO DE ACERO CON
VALONA INTERMEDIA
Demountable steel bush



IBE/B CASQUILLO DE BRONCE/ACERO
INTERIOR CON VALONA INTERMEDIA
Demountable steel/bronze bush



GSC JAULA DE BOLAS DE BRONCE
Y LATÓN
Brass and bronze ball cage



IBEG CASQUILLO DE JAULA DE BOLAS
CON VALONA INTERMEDIA
Demountable bushing for ball
cages

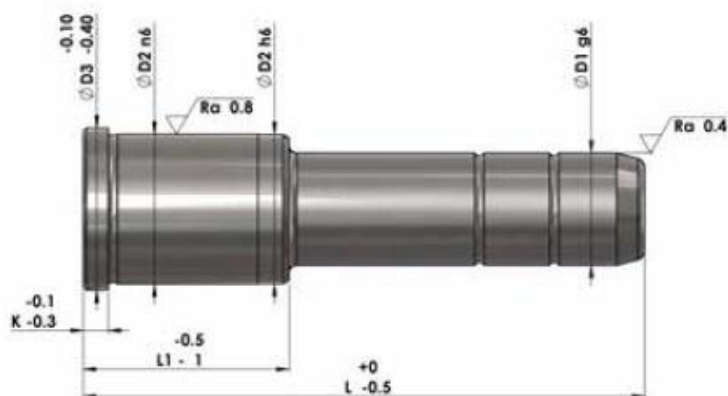
VARIOS / VARIOUS



RO ARANDELAS PARA COLUMNAS Y
CASQUILLOS EXTRAÍBLES
Washer for demountable pillars
and bushes



ST ABRAZADERAS PARA COLUMNAS
Y CASQUILLOS EXTRAÍBLES
Clamps for demountable pillars
and bushes



MATERIAL / MATERIAL
Acero 1.7131 / steel 1.7131
TRATAMIENTO TÉRMICO / HEAT TREATMENT
cementación- aceleración / carburizing and quenching
DUREZA / HARDNESS
60-62 HRC

D1	D2	D3	K	L1	L											
					50	60	70	80	90	100	120	140	160	180	200	220
12	18	22	5	22	♦	♦	♦	♦	♦	♦						
				26	♦	♦	♦	♦	♦							
				36	♦	♦	♦	♦	♦	♦						
				46			♦	♦	♦	♦						
				56					♦	♦	♦					
14	20	24	5	22	♦	♦	♦	♦	♦	♦						
				26		♦	♦	♦	♦	♦	♦					
				36			♦	♦	♦	♦	♦					
				46				♦	♦	♦	♦	♦				
				56						♦	♦	♦				
16	22	26	5	22	♦	♦	♦	♦	♦	♦	♦					
				26	♦	♦	♦	♦	♦	♦	♦	♦				
				36		♦	♦	♦	♦	♦	♦	♦	♦			
				46			♦	♦	♦	♦	♦	♦	♦	♦		
				56				♦	♦	♦	♦	♦	♦	♦	♦	
				66						♦	♦	♦	♦	♦	♦	
				76							♦	♦	♦	♦	♦	
18	26	30	5	26		♦	♦	♦	♦	♦						
				36		♦	♦	♦	♦	♦	♦					
				46			♦	♦	♦	♦	♦	♦	♦			
				56				♦	♦	♦	♦	♦	♦	♦		
				66						♦	♦	♦	♦	♦	♦	
				76							♦	♦	♦	♦	♦	
20	28	32	6	26		♦	♦	♦	♦	♦	♦	♦				
				36		♦	♦	♦	♦	♦	♦	♦				
				46			♦	♦	♦	♦	♦	♦	♦			
				56					♦	♦	♦	♦	♦	♦	♦	
	*30	*34		66						♦	♦	♦	♦	♦	♦	♦
				76							♦	♦	♦	♦	♦	
				86								♦	♦	♦	♦	♦
				96									♦	♦	♦	♦

* Bajo pedido / On request

Todas las dimensiones son en mm
All dimensions are in mm

Ejemplo de orden:
Order example:

SS-C1-D1xL1xL

Hasta que se agote
until exhaustion

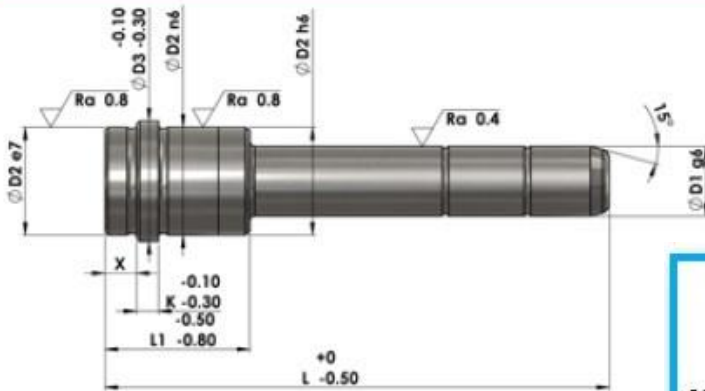
D1	D2	D3	K	L1	L																		
					80	90	100	120	140	160	180	200	220	240	260	280	300	340	350	400			
25	34 *36	38 *40	7	28	◆	◆	◆	◆	◆														
				38	◆	◆	◆	◆	◆	◆	◆												
				46		◆	◆	◆	◆	◆	◆	◆											
				56			◆	◆	◆	◆	◆	◆	◆	◆									
				66				◆	◆	◆	◆	◆	◆	◆	◆	◆	◆						
				76				◆	◆	◆	◆	◆	◆	◆	◆	◆	◆	◆					
				86					◆	◆	◆	◆	◆	◆	◆	◆	◆	◆					
				96						◆	◆	◆	◆	◆	◆	◆	◆	◆	◆				
				106								◆	◆	◆	◆	◆	◆	◆	◆	◆			
				116									◆	◆	◆	◆	◆	◆	◆	◆	◆		
32	40	45	7	38			◆	◆															
				46			◆	◆	◆	◆													
				56			◆	◆	◆	◆	◆	◆	◆	◆									
				66				◆	◆	◆	◆	◆	◆	◆	◆	◆	◆						
				76					◆	◆	◆	◆	◆	◆	◆	◆	◆	◆					
				86						◆	◆	◆	◆	◆	◆	◆	◆	◆	◆				
				96							◆	◆	◆	◆	◆	◆	◆	◆	◆	◆	◆		
				106								◆	◆	◆	◆	◆	◆	◆	◆	◆	◆	◆	◆
				116									◆	◆	◆	◆	◆	◆	◆	◆	◆	◆	◆
				126										◆	◆	◆	◆	◆	◆	◆	◆	◆	◆
146											◆	◆	◆	◆	◆	◆	◆	◆	◆				
40	48	52	8	46				◆	◆	◆	◆	◆											
				56				◆	◆	◆	◆	◆	◆										
				66					◆	◆	◆	◆	◆	◆	◆								
				76						◆	◆	◆	◆	◆	◆	◆	◆						
				86							◆	◆	◆	◆	◆	◆	◆	◆					
				96								◆	◆	◆	◆	◆	◆	◆	◆	◆	◆		
				106									◆	◆	◆	◆	◆	◆	◆	◆	◆	◆	◆
				116										◆	◆	◆	◆	◆	◆	◆	◆	◆	◆
				126											◆	◆	◆	◆	◆	◆	◆	◆	◆
				146												◆	◆	◆	◆	◆	◆	◆	◆
50	60	65	10	96									◆	◆	◆	◆	◆	◆	◆				
				116											◆	◆		◆					
				126													◆	◆	◆	◆	◆	◆	◆
				146														◆	◆	◆	◆	◆	◆
				176															◆	◆	◆	◆	◆

* Bajo pedido / On request

Todas las dimensiones son en mm
All dimensions are in mm

Ejemplo de orden:
Order example:

SS-C1-D1xL1xL



MATERIAL / MATERIAL
Acero 1.7131 / steel 1.7131
TRATAMIENTO TÉRMICO / HEAT TREATMENT
cementación-aceleración / carburizing and quenching
DUREZA / HARDNESS
60-62 HRC

D1	D2	D3	K	X	L1	L = LUNGHEZZA TOTALE								
						80	90	110	130	150	170	190	210	230
16	22	26	5	10	36	◆	◆	◆	◆	◆				
					46	◆	◆	◆	◆					
					56		◆	◆	◆	◆				
					66			◆	◆	◆	◆	◆	◆	
					76				◆	◆	◆	◆	◆	
					86					◆	◆	◆	◆	
20	28 (*30)	32 (*34)	6	10	46	◆	◆	◆	◆	◆				
					56		◆	◆	◆	◆				
					66			◆	◆	◆	◆	◆	◆	
					76				◆	◆	◆	◆	◆	
					86					◆	◆	◆	◆	
					106						◆	◆	◆	
25	34 (*36)	38 (*40)	7	10	46		◆	◆	◆	◆	◆			
					56		◆	◆	◆	◆	◆	◆		
					66			◆	◆	◆	◆	◆	◆	
					76				◆	◆	◆	◆	◆	
					86					◆	◆	◆	◆	
					106						◆	◆	◆	
32	40	45	7	10	46			◆	◆	◆				
					56			◆	◆	◆				
					66			◆	◆	◆	◆	◆	◆	
					76				◆	◆	◆	◆	◆	
					86					◆	◆	◆	◆	
					106						◆	◆	◆	
					116							◆	◆	
					126								◆	◆
					136									◆
40	48	52	8	10	56				◆	◆				
					66					◆	◆			
					76						◆	◆	◆	
					86							◆	◆	
					106								◆	

* Bajo pedido / On request

Todas las dimensiones son en mm
All dimensions are in mm

Ejemplo de orden:
Order example:

SS-C1S-D1xL1xL



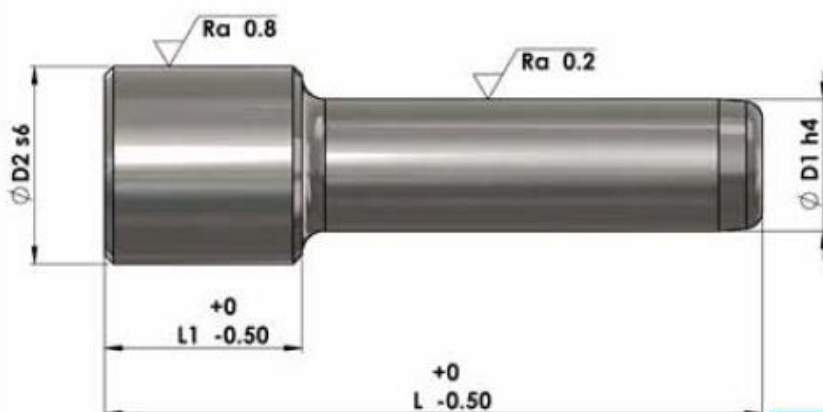
MATERIAL / MATERIAL
Acero 1.7131 / steel 1.7131
TRATAMIENTO TÉRMICO / HEAT TREATMENT
cementación-aceleración / carburizing and quenching
DUREZA / HARDNESS
60-62 HRC

D1	10	12	14	16	18	20	25	32	40	50	60
D2	14	16	18	20	22	24	30	37	45	55	68
K	4	5	5	5	5	6	7	7	8	10	12
L	L1										
50	13	◆	◆	◆	◆	◆					
60	15	◆	◆	◆	◆	◆	◆				
70		◆	◆	◆	◆	◆	◆				
80	20	◆	◆	◆	◆	◆	◆	◆			
90		◆	◆	◆	◆	◆	◆	◆			
100	25	◆	◆	◆	◆	◆	◆	◆			
110				◆	◆	◆	◆				
120		◆	◆	◆	◆	◆	◆	◆	◆	◆	
130				◆	◆	◆	◆				
140		◆	◆	◆	◆	◆	◆	◆	◆	◆	
150			◆	◆	◆	◆					
160	30	◆	◆	◆	◆	◆	◆	◆	◆		
180	35			◆	◆	◆	◆	◆	◆		
200					◆	◆	◆	◆	◆		
220					◆	◆	◆	◆	◆		
240	40					◆	◆	◆	◆	◆	
260							◆	◆	◆	◆	◆
280								◆	◆	◆	◆
300		50						◆	◆	◆	◆
350		60							◆	◆	◆
400	65							◆	◆	◆	◆
450	75							◆	◆	◆	◆
500									◆	◆	◆
600	85									◆	◆
800	90										◆

Todas las dimensiones son en mm
All dimensions are in mm

Ejemplo de orden:
Order example:

SS-C2-D1xL



MATERIAL / MATERIAL
Acero 1.7131 / steel 1.7131
TRATAMIENTO TÉRMICO / HEAT TREATMENT
cementación-aceleración / carburizing and quenching
DUREZA / HARDNESS
60-62 HRC

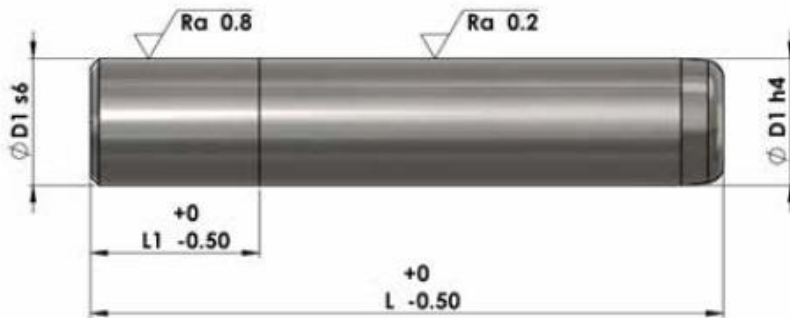
D1	D2	L1	L																	
			85	95	105	115	125	135	145	155	170	185	200	225	250	275	300	325	350	400
15-16	26	30	◆	◆	◆	◆	◆	◆	◆	◆										
17-18	28	30	◆	◆	◆	◆														
		35				◆	◆	◆	◆											
19-20	30	40								◆	◆	◆								
		30	◆	◆	◆															
* 21-22	35	35				◆	◆	◆	◆											
		40								◆	◆	◆	◆							
24-25	36	35				◆	◆	◆												
		40							◆	◆	◆	◆	◆	◆	◆					
30-31	45	40				◆	◆	◆	◆	◆										
		45									◆	◆	◆	◆	◆	◆	◆			
* 34-35	50	40							◆	◆										
		50									◆	◆	◆	◆						
		60												◆	◆	◆	◆	◆		
40-41	55	60							◆	◆										
		70									◆	◆	◆	◆	◆	◆	◆	◆	◆	◆
* 45-46	65	60								◆	◆									
		65										◆	◆	◆	◆					
		70													◆	◆	◆	◆	◆	◆
50-51	70	70									◆	◆	◆	◆	◆	◆	◆	◆	◆	

*Hasta que se agote / until exhaustion

Todas las dimensiones son en mm
All dimensions are in mm

Ejemplo de orden:
Order example:

SS-C3-D1xL



MATERIAL / MATERIAL

Acero 1.7131 / steel 1.7131

TRATAMIENTO TÉRMICO / HEAT TREATMENT
cementación-aceleración / carburizing and quenching

DUREZA / HARDNESS
60÷62 HRC

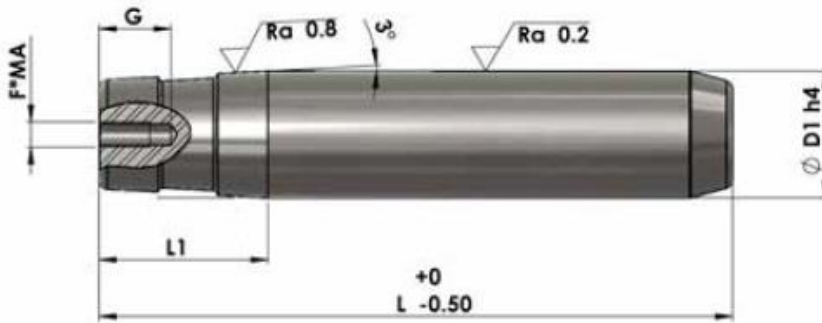
D1	L1	L																	
		85	95	105	115	125	135	145	155	170	185	200	225	250	275	300	325	350	400
15-16	18	◆	◆	◆	◆	◆	◆	◆	◆										
17-18	18	◆	◆	◆	◆	◆	◆	◆	◆	◆	◆								
19-20	20	◆	◆	◆	◆	◆	◆	◆	◆	◆	◆								
*	20				◆	◆	◆	◆											
21-22	25								◆	◆	◆	◆							
24-25	25				◆	◆	◆	◆	◆	◆									
	30										◆	◆	◆	◆					
30-31	25				◆	◆	◆	◆	◆	◆									
	30										◆	◆	◆	◆	◆	◆			
*	30								◆	◆	◆	◆							
34-35	35											◆	◆	◆	◆	◆	◆	◆	◆
	35																		
40-41	35								◆	◆	◆	◆	◆						
	40												◆	◆	◆	◆	◆	◆	◆
*	35								◆	◆	◆	◆							
45-46	45												◆	◆	◆	◆	◆	◆	◆
	45																		
50-51	40									◆	◆	◆							
	50												◆	◆	◆	◆	◆	◆	◆
63	60												◆	◆	◆	◆	◆	◆	◆

* Hasta que se agote / until exhaustion

Todas las dimensiones son en mm
All dimensions are in mm

Ejemplo de orden:
Order example:

SS-C4-D1xL



MATERIAL / MATERIAL

Acero 1.7131 / steel 1.7131

TRATAMIENTO TÉRMICO / HEAT TREATMENT

cementación-aceleración / carburizing and quenching

DUREZA / HARDNESS

60-62 HRC

D1	L1	G	F,MA	L									
				115	135	155	170	185	200	225	250	300	400
24 25	48	20	8	◆	◆	◆	◆	◆	◆				
30 31	57	20	8		◆	◆	◆	◆	◆	◆	◆	◆	
40 41	63	25	10				◆	◆	◆	◆	◆	◆	◆
50 51	80	25	10					◆	◆	◆	◆	◆	◆

Todas las dimensiones son en mm
All dimensions are in mm

Ejemplo de orden:
Order example:

SS-C5-D1xL



MATERIAL / MATERIAL

Acero 1.7131 / steel 1.7131

TRATAMIENTO TÉRMICO / HEAT TREATMENT

cementación-aceleración / carburizing and quenching

DUREZA / HARDNESS

60÷62 HRC

D	L														
	125	140	160	180	200	220	240	260	280	300	320	350	400	450	500
24-25	◆	◆	◆	◆	◆	◆	◆	◆							
30-32		◆	◆	◆	◆	◆	◆	◆	◆	◆					
40-42			◆	◆	◆	◆	◆	◆	◆	◆	◆	◆	◆		
50-52				◆	◆	◆	◆	◆	◆	◆	◆	◆	◆		
63					◆	◆	◆	◆	◆	◆	◆	◆	◆	◆	
80								◆	◆	◆	◆	◆	◆	◆	◆

Todas las dimensiones son en mm
All dimensions are in mm

Ejemplo de orden:
Order example:

SS-C8-DxL



MATERIAL / MATERIAL
Acero 1.7131 / steel 1.7131
TRATAMIENTO TÉRMICO / HEAT TREATMENT
cementación-aceleración / carburizing and quenching
DUREZA / HARDNESS
60-62 HRC

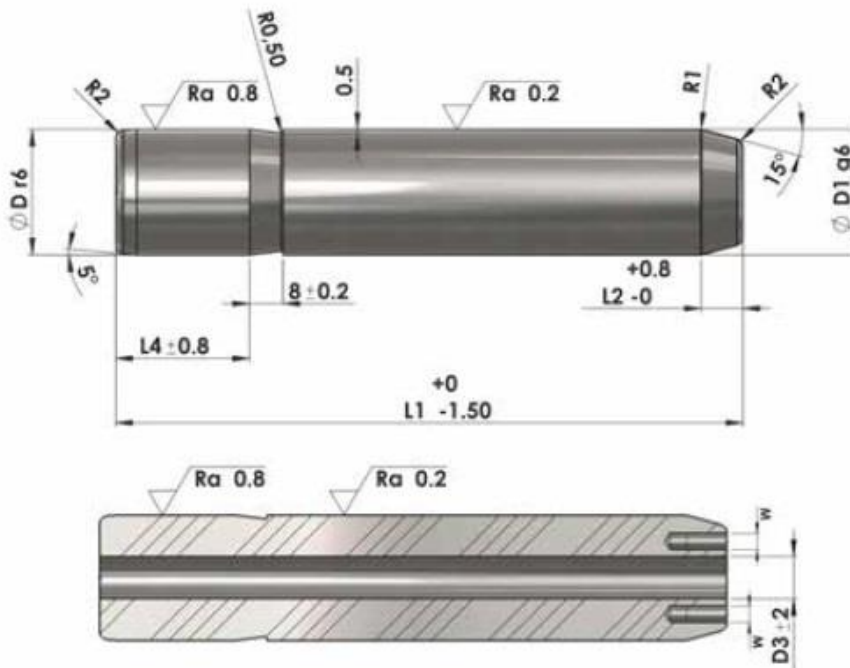
D	L2	L4	L											
			140	160	180	200	224	250	280	315	355	400	450	500
32	8	45	◆	◆	◆	◆	◆	◆						
40	8	56	◆	◆	◆	◆	◆	◆	◆					
50	10	70			◆	◆	◆	◆	◆	◆	◆			
63	10	80				◆	◆	◆	◆	◆	◆	◆		
80 M12	10	100					◆	◆	◆	◆	◆	◆		
100 M12	10	125								◆	◆	◆		
125 M12	12	140									◆	◆	◆	◆

Nota: Del diámetro 80 se realiza la rosca M12 para el transporte
Note: From diameter 80 is performed thread M12 for transport.

Todas las dimensiones son en mm
All dimensions are in mm

Ejemplo de orden:
Order example:

SS-C9-DxL



MATERIAL / MATERIAL

Acero 1.7131 / steel 1.7131

TRATAMIENTO TÉRMICO / HEAT TREATMENT

cementación-aceleración / carburizing and quenching

DUREZA / HARDNESS

60÷62 HRC

D	L2	L4	M	D3±2	L											
					140	160	180	200	224	250	280	315	355	400	450	500
80	10	100	2x M12	40							◆	◆	◆	◆		
100	10	125	2x M12	50								◆	◆	◆		
125	12	140	2x M12	65									◆	◆	◆	◆

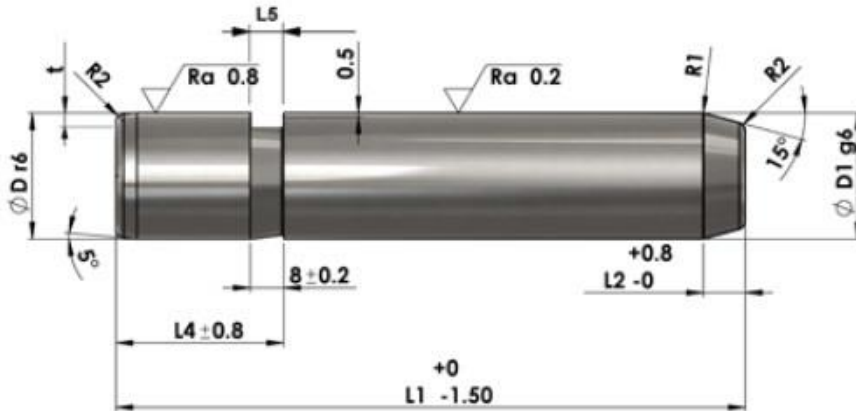
Nota: Desde el diametro 80 se realiza la rozca M12 para el transporte: o (sólo bajo pedido) puede ser hecho un agujero pasante para aclarar.

Note: From diameter 80 is performed thread M12 for transport: or (oly on request) can be done a through hole for lightening.

Todas las dimensiones son en mm
All dimensions are in mm

Ejemplo de orden:
Order example:

SS-C9F-DxL



MATERIAL / MATERIAL

Acero 1.7131 / steel 1.7131

TRATAMIENTO TÉRMICO / HEAT TREATMENT

cementación-aceleración / carburizing and quenching

DUREZA / HARDNESS

60÷62 HRC

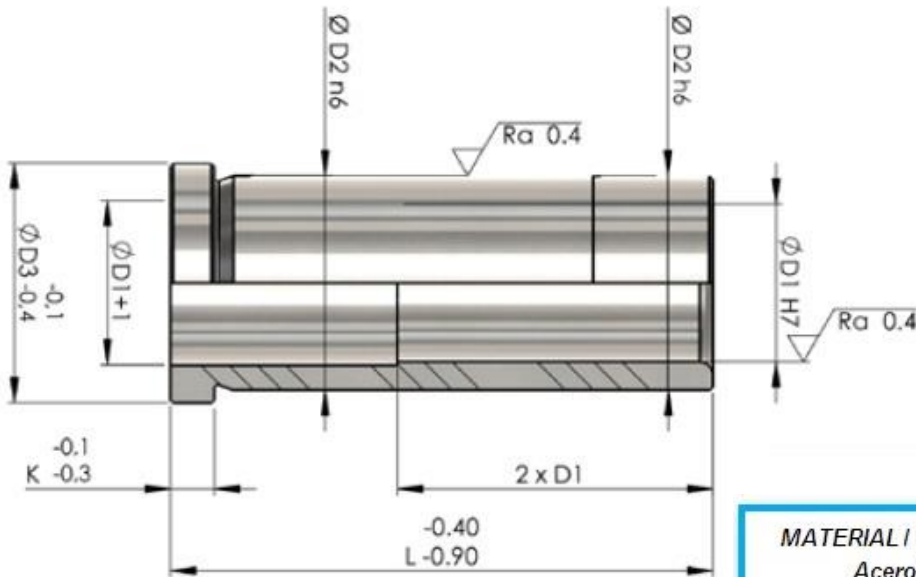
D	t	L2	L4	L5	L											PVW	
					140	160	180	200	224	240	280	315	355	400	450		500
32	3	8	45	7	◆	◆	◆	◆	◆	◆							02
40	4	8	56	10	◆	◆	◆	◆	◆	◆	◆						04
50	4	10	70	10			◆	◆	◆	◆	◆	◆	◆				04
63	6,5	10	80	12				◆	◆	◆	◆	◆	◆	◆			06
80 M12	8	10	100	12					◆	◆	◆	◆	◆	◆			06

Nota: Desde el diámetro 80 se realiza la rosca M12 para el transporte: o (sólo bajo petición) se puede realizar un agujero para la iluminación
Note: From diameter 80 is performed thread M12 for transport: or (oly on request) can be done a through hole for lightening.

Todas las dimensiones son en mm
All dimensions are in mm

Ejemplo de orden:
Order example:

SS-VW-DxL



MATERIAL / MATERIAL
Acero 1.7131 / steel 1.7131
TRATAMIENTO TÉRMICO / HEAT TREATMENT
cementación-aceleración / carburizing and quenching
DUREZA / HARDNESS
60÷62 HRC

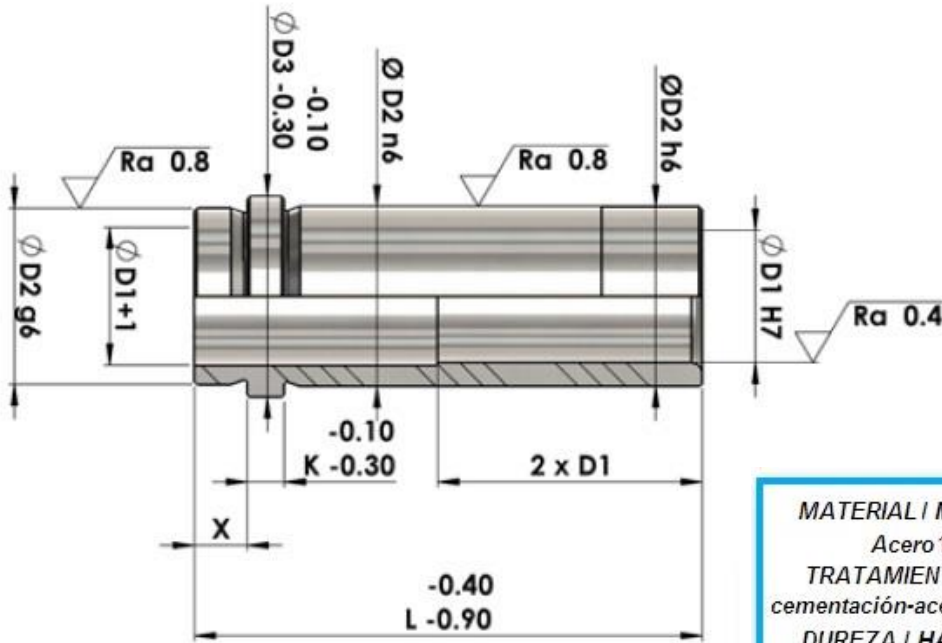
D1	12	14	16	18	20	25	32	40	50	60	
D2	18	20	22	26	28 (*30)	34 (*36)	40	48	60	74	
D3	22	24	26	30	32 (*34)	38 (*40)	45	52	65	80	
K	5	5	5	5	6	7	7	8	10	12	
L	22	◆	◆	◆	◆	◆					
	26	◆	◆	◆	◆	◆	◆				
	36	◆	◆	◆	◆	◆	◆	◆			
	46	◆	◆	◆	◆	◆	◆	◆	◆		
	56	◆	◆	◆	◆	◆	◆	◆	◆		
	66		◆	◆	◆	◆	◆	◆	◆		
	76			◆	◆	◆	◆	◆	◆	◆	
	86			◆	◆	◆	◆	◆	◆	◆	
	96			◆	◆	◆	◆	◆	◆	◆	◆
	106					◆	◆	◆	◆	◆	◆
	116					◆	◆	◆	◆	◆	◆
	126					◆	◆	◆	◆	◆	◆
	136						◆	◆	◆	◆	◆
	146						◆	◆	◆	◆	◆
	156							◆	◆	◆	◆
176									◆	◆	
196										◆	

* Bajo pedido / On request

Todas las dimensiones son en mm
All dimensions are in mm

Ejemplo de orden:
Order example:

SS-B1-D1xL



MATERIAL / MATERIAL
Acero 1.7131 / steel 1.7131
TRATAMIENTO TÉRMICO / HEAT TREATMENT
cementación-aceleración / carburizing and quenching
DUREZA / HARDNESS
60-62 HRC

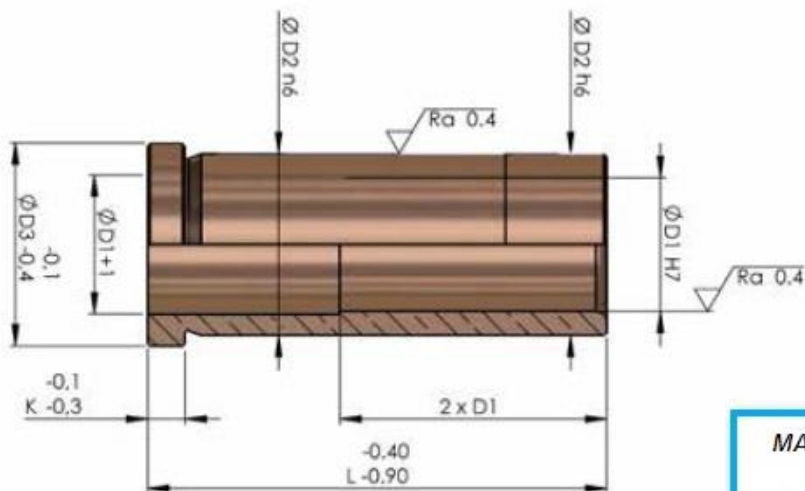
D1	D2	D3	K	X	L											
					26	36	46	56	66	76	86	96	106	116	126	136
16	22	26	5	10	◆	◆	◆	◆	◆	◆	◆	◆				
20	28 30*	32 34*	6		◆	◆	◆	◆	◆	◆	◆	◆				
25	34 36*	38 40*	7			◆	◆	◆	◆	◆	◆	◆				
32	40	45	7				◆	◆	◆	◆	◆	◆	◆	◆	◆	◆
40	48	52	8					◆	◆	◆	◆	◆	◆	◆	◆	◆

* Bajo pedido / On request

Todas las dimensiones son en mm
All dimensions are in mm

Ejemplo de orden:
Order example:

SS-B1S-D1xL



MATERIAL / MATERIAL

Acero 1.7131 / steel 1.7131

TRATAMIENTO TÉRMICO / HEAT TREATMENT
cementación-aceleración / carburizing and quenching

DUREZA / HARDNESS

60÷62 HRC

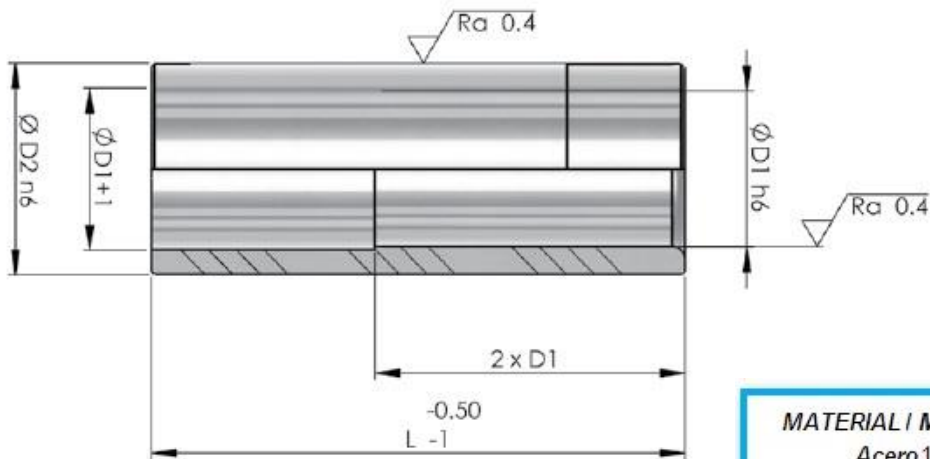
D1	16	20	25	32	40	50	
D2	22	28 (*30)	34 (*36)	40	48	60	
D3	26	32 (*34)	38 (*40)	45	52	65	
K	5	6	7	7	8	10	
L	22	◆	◆				
	26	◆	◆	◆	◆		
	36	◆	◆	◆	◆	◆	
	46	◆	◆	◆	◆	◆	
	56	◆	◆	◆	◆	◆	
	66	◆	◆	◆	◆	◆	
	76	◆	◆	◆	◆	◆	◆
	86	◆	◆	◆	◆	◆	◆
	96	◆	◆	◆	◆	◆	◆
	106		◆	◆	◆	◆	◆
	116		◆	◆	◆	◆	◆
	126		◆	◆	◆	◆	◆
	136				◆	◆	◆
	146				◆	◆	◆
156						◆	

* Bajo pedido / On request

Todas las dimensiones son en mm
All dimensions are in mm

Ejemplo de orden:
Order example:

SS-B/1B-D1xL



MATERIAL / MATERIAL
Acero 1.7131 / steel 1.7131
TRATAMIENTO TÉRMICO / HEAT TREATMENT
cementación-aceleración / carburizing and quenching
DUREZA / HARDNESS
60÷62 HRC

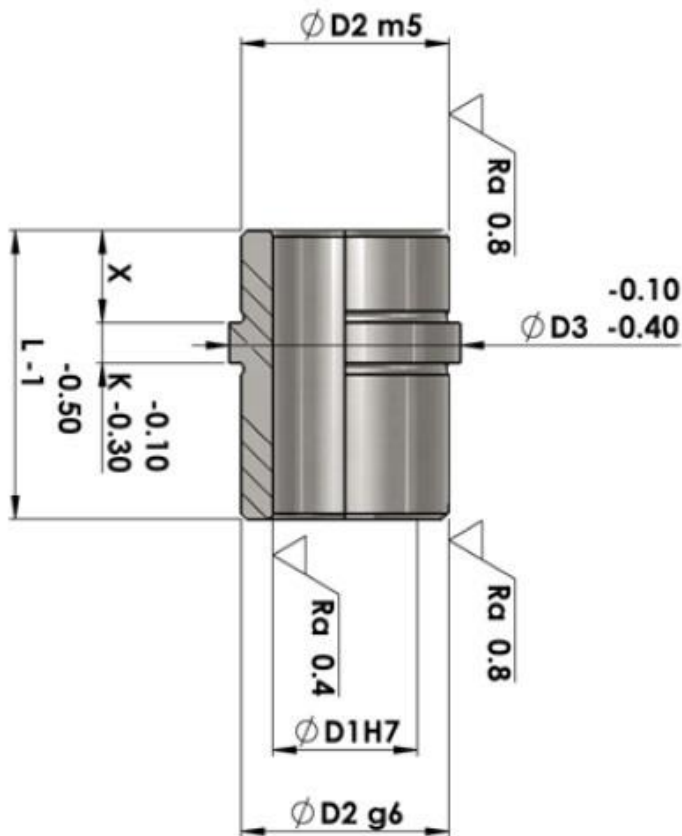
D1	12	14	16	18	20	25	32	40
D2	18	20	22	26	28 (*30)	34 (*36)	40	48
L	22	◆	◆	◆	◆			
	26	◆	◆	◆	◆	◆	◆	
	36	◆	◆	◆	◆	◆	◆	
	46	◆	◆	◆	◆	◆	◆	◆
	56	◆	◆	◆	◆	◆	◆	◆
	66		◆	◆	◆	◆	◆	◆
	76			◆	◆	◆	◆	◆
	86			◆	◆	◆	◆	◆
	96			◆	◆	◆	◆	◆
	106					◆	◆	◆
116						◆	◆	

* Bajo pedido / On request

Todas las dimensiones son en mm
All dimensions are in mm

Ejemplo de orden:
Order example:

SS-B2-D1xL



MATERIAL / MATERIAL
Acero 1.7131 / steel 1.7131
TRATAMIENTO TÉRMICO / HEAT TREATMENT
cementación-aceleración / carburizing and quenching
DUREZA / HARDNESS
60÷62 HRC

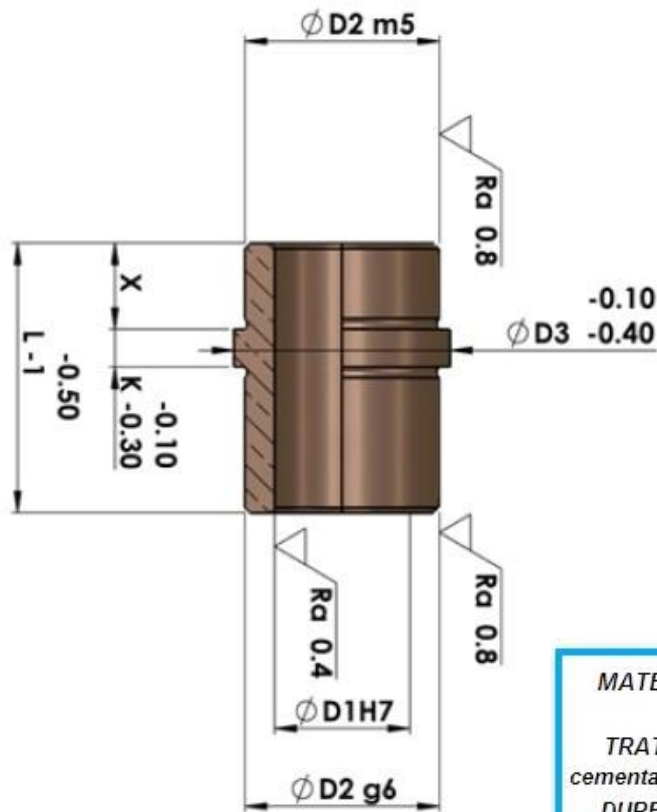
D1	12	14	16	18	20	25	32	40	50
D2	18	20	22	26	28 (*30)	34 (*36)	40	48	60
D3	22	24	26	30	32 (*34)	38 (*40)	45	52	65
X	16	16	16	16	16	16	25	32	32
K	5	5	5	5	6	7	7	8	10
L	32-40	◆	◆	◆	◆	◆			
	50-65						◆		
	65-80							◆	
	70-90								◆

* Bajo pedido / On request

Todas las dimensiones son en mm
All dimensions are in mm

Ejemplo de orden:
Order example:

SS-B3-D1xL



MATERIAL / MATERIAL
Acero 1.7131 / steel 1.7131
TRATAMIENTO TÉRMICO / HEAT TREATMENT
cementación-aceleración / carburizing and quenching
DUREZA / HARDNESS
60÷62 HRC

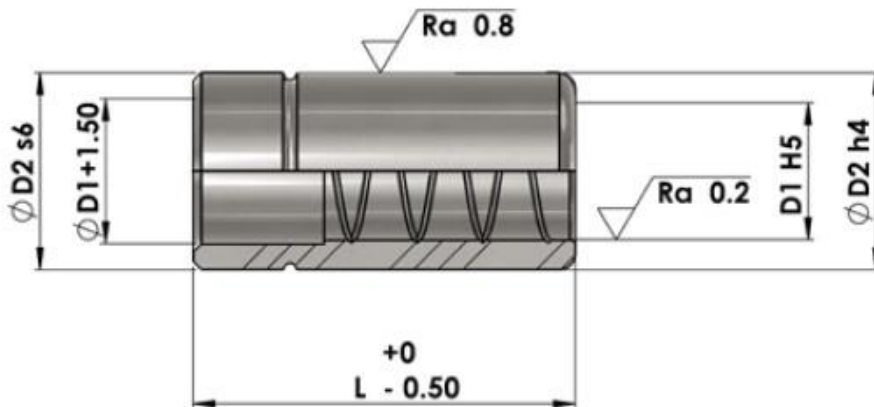
D1	14	16	18	20	25	32	40
D2	20	22	26	28 (*30)	34 (*36)	40	48
D3	24	26	30	32 (*34)	38 (*40)	45	52
X	16	16	16	16	16	25	32
K	5	5	5	6	7	7	8
L	32-40	◆	◆	◆	◆		
	50-65					◆	
	65-80						◆

* Bajo pedido / On request

Todas las dimensiones son en mm
All dimensions are in mm

Ejemplo de orden:
Order example:

SS-B3/B-D1xL



MATERIAL / MATERIAL

Acero 1.7131 / steel 1.7131

TRATAMIENTO TÉRMICO / HEAT TREATMENT
cementación-aceleración / carburizing and quenching

DUREZA / HARDNESS

60÷62 HRC

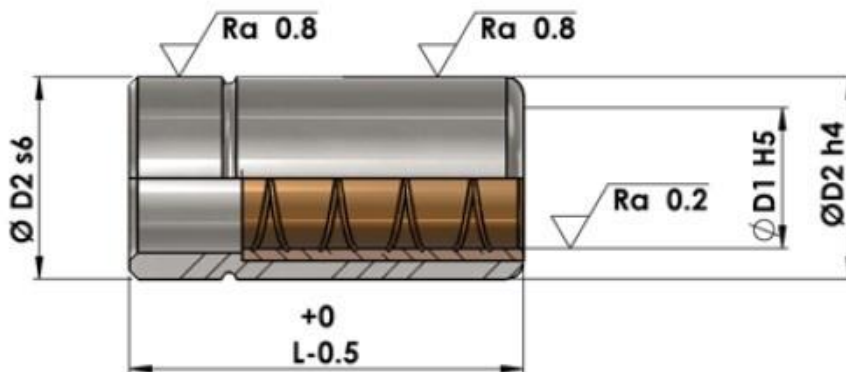
D1	D2	L	
		normale	corta
15-16	26	50	35
17-18	28	55	45
19-20	30	60	45
*21-22	35	65	50
24-25	36	70	50
30-31	45	80	55
*34-35	50	80	55
40-41	55	100	60
*45-46	65	100	60
50-51	70	100	60
63	85	100	-
80	100	130	-

* Hasta que se agote / until exhaustion

Todas las dimensiones son en mm
All dimensions are in mm

Ejemplo de orden:
Order example:

SS-B4-D1xL



MATERIAL / MATERIAL
Acero 1.7131 / steel 1.7131
TRATAMIENTO TÉRMICO / HEAT TREATMENT
cementación-aceleración / carburizing and quenching
DUREZA / HARDNESS
60-62 HRC

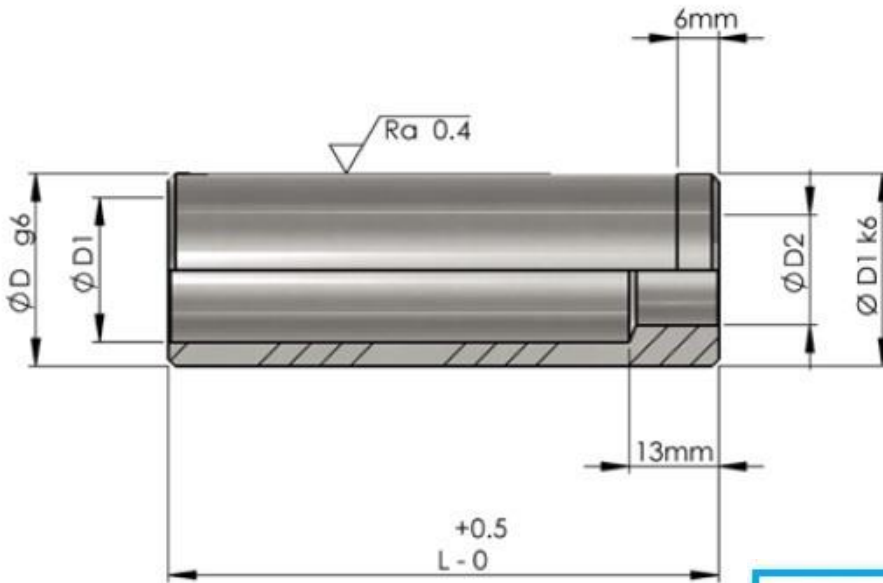
D1	D2	L	
		normale	corta
16	26	50	35
18	28	55	45
19-20	30	60	45
*21-22	35	65	50
24-25	36	70	50
30-31	45	80	55
*34-35	50	80	55
40-41	55	100	60
*45-46	65	100	60
50-51	70	100	60
63	85	100	-

*Hasta que se agote / until exhaustion

Todas las dimensiones son en mm
All dimensions are in mm

Ejemplo de orden:
Order example:

SS-B4/B-D1xL



MATERIAL / MATERIAL

Acero 1.7131 / steel 1.7131

TRATAMIENTO TÉRMICO / HEAT TREATMENT
cementación-aceleración / carburizing and quenching

DUREZA / HARDNESS
60-62 HRC

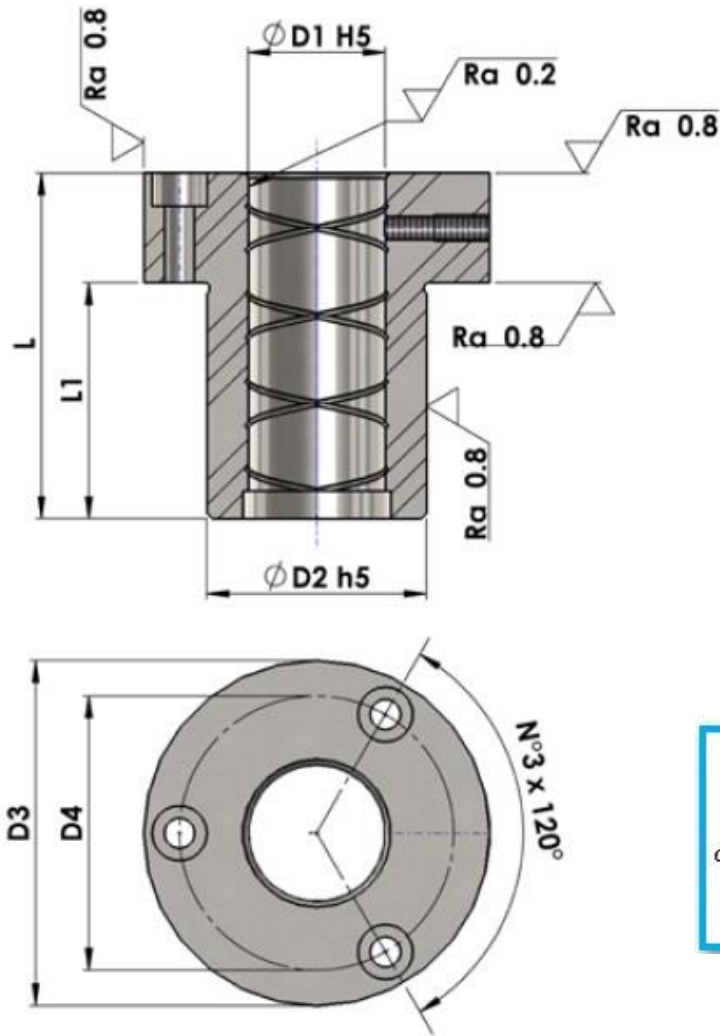
D	22	28	34	40	
D1	17	21	26	33	
D2	M12				
L	30	◆	◆	◆	
	60	◆	◆	◆	◆
	80	◆	◆	◆	◆
	100	◆	◆	◆	◆
	120	◆	◆	◆	◆
	140	◆	◆	◆	◆
	160			◆	◆

* *Bajo pedido / On request*

Todas las dimensiones son en mm
All dimensions are in mm

Ejemplo de orden:
Order example:

SS-BC-DxL



MATERIAL / MATERIAL
Acero 1.7131 / steel 1.7131
TRATAMIENTO TÉRMICO / HEAT TREATMENT
cementación-aceleración / carburizing and quenching
DUREZA / HARDNESS
60-62 HRC

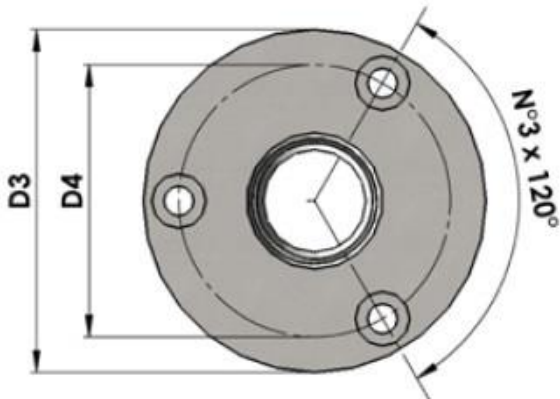
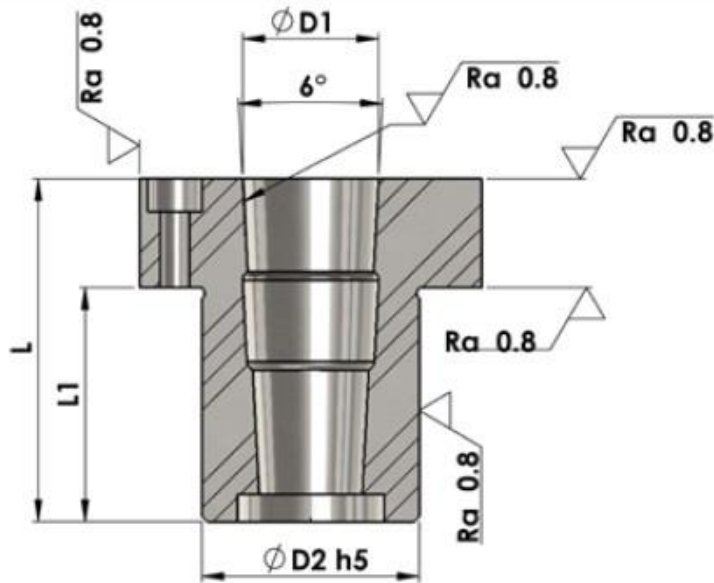
D1	D2	D3	D4	L1	L	VITI screws
24 25	40	63	50	43	63	5 MA
30 31	48	72	58	47	72	5 MA
40 41	58	83	70	52	80	6 MA
50 51	70	103	86	58	100	8 MA
* 63	85	120	100	57	100	8 MA

* Sólo cilíndrico / only cylindrical

Todas las dimensiones son en mm
All dimensions are in mm

Ejemplo de orden:
Order example:

SS-B5-D1



MATERIAL / MATERIAL
Acero 1.7131 / steel 1.7131
TRATAMIENTO TÉRMICO / HEAT TREATMENT
cementación-aceleración / carburizing and quenching
DUREZA / HARDNESS
60-62 HRC

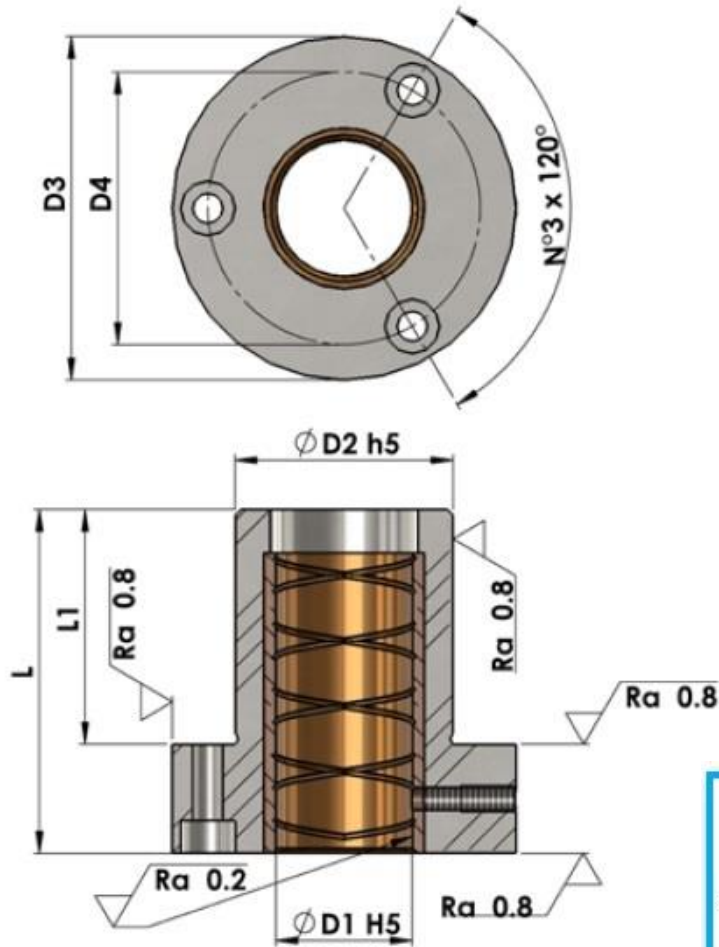
p

D1	D2	D3	D4	L1	L	VITI screws
24 25	40	63	50	43	63	5 MA
30 31	48	72	58	47	72	5 MA
40 41	58	83	70	52	80	6 MA
50 51	70	103	86	58	100	8 MA

Todas las dimensiones son en mm
All dimensions are in mm

Ejemplo de orden:
Order example:

SS-B5 CON-D1



MATERIAL / MATERIAL

Acero 1.7131 / steel 1.7131

TRATAMIENTO TÉRMICO / HEAT TREATMENT
cementación-aceleración / carburizing and quenching

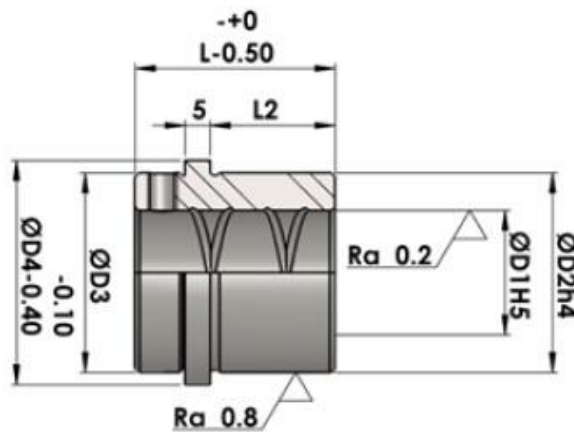
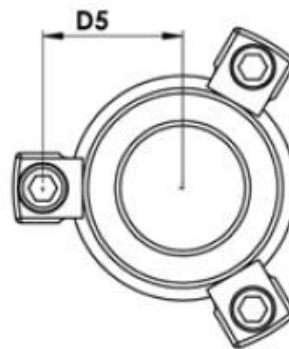
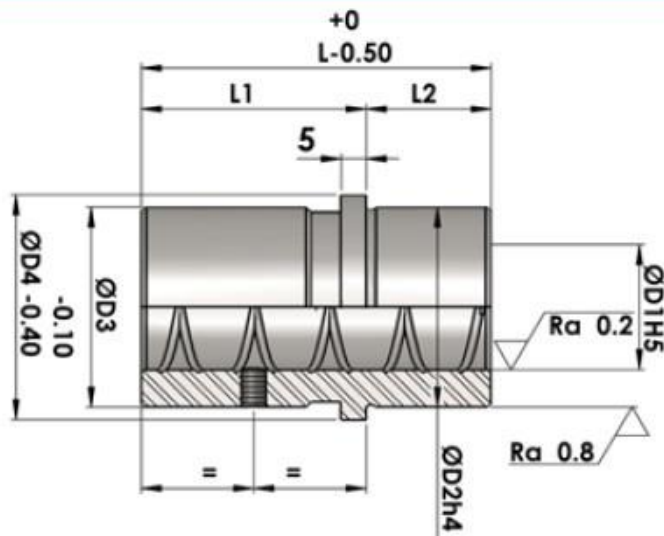
DUREZA / HARDNESS
60-62 HRC

D1	D2	D3	D4	L1	L	VITI screws
24 25	40	63	50	43	63	5 MA
30 31	48	72	58	47	72	5 MA
40 41	58	83	70	52	80	6 MA
50 51	70	103	86	58	100	8 MA
63	85	120	100	57	100	8 MA

Todas las dimensiones son en mm
All dimensions are in mm

Ejemplo de orden:
Order example:

SS-B5/B-D1



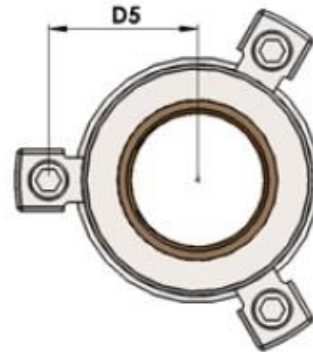
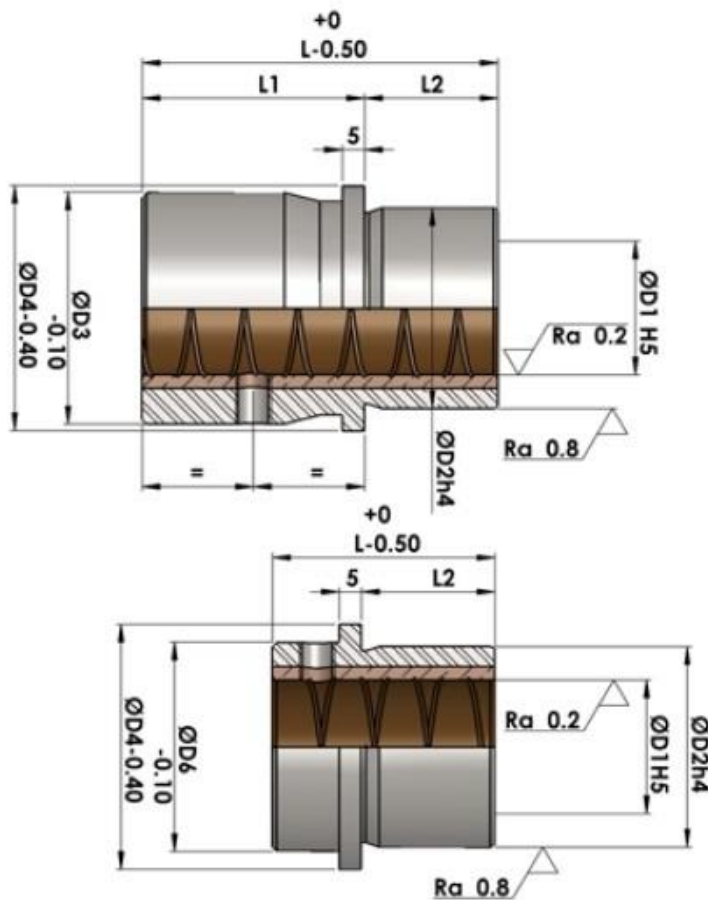
MATERIAL / MATERIAL
Acero 1.7131 / steel 1.7131
TRATAMIENTO TÉRMICO / HEAT TREATMENT
cementación-aceleración / carburizing and quenching
DUREZA / HARDNESS
60-62 HRC

D1	L		D2	D3	D4	D5	D6	L1	L2
24 25	40	70	40	42	45	26	37	45	25
30 32	50	80	45	52	55	32,5	47	50	30
40 42	55	90	55	62	65	37,5	57	55	35
50 52	65	100	70	77	79	44,5	72	55	45
63	68	110	81	90	92	51	84	62	48

Todas las dimensiones son en mm
All dimensions are in mm

Ejemplo de orden:
Order example:

SS-BE-D1xL



MATERIAL / MATERIAL

Acero 1.7131 / steel 1.7131

TRATAMIENTO TÉRMICO / HEAT TREATMENT

cementación-aceleración / carburizing and quenching

DUREZA / HARDNESS

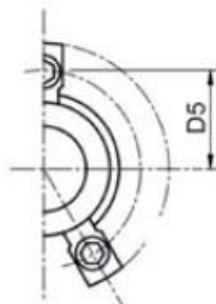
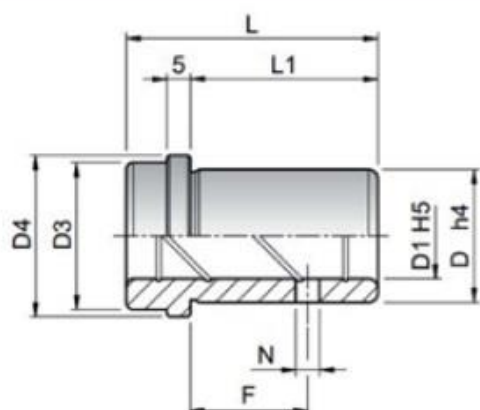
60-62 HRC

D1	L		D2	D3	D4	D5	D6	L1	L2
24 25	40	70	40	42	45	26	37	45	25
30 32	50	80	45	52	55	32,5	47	50	30
40 42	55	90	55	62	65	37,5	57	55	35
50 52	65	100	70	77	79	44,5	72	55	45
63	68	110	81	90	92	51	84	62	48

Todas las dimensiones son en mm
All dimensions are in mm

Ejemplo de orden:
Order example:

SS-BE/B-D1xL



MATERIAL / MATERIAL

Acero 1.7131 / steel 1.7131

TRATAMIENTO TÉRMICO / HEAT TREATMENT
cementación-aceleración / carburizing and quenching

DUREZA / HARDNESS
60÷62 HRC

D1	L	L1	D	D3	D4	D5	N	F
18-19	31	18	28	29	34	20,5	5	8
24-25	36	23	38	38	44	25,5	5	9
30-32	43	30	45	47	53	31,5	5	11
40-42	51	38	54	57	63	36,5	8	11
50-52	61	48	65	73	79	44,5	8	14
63	74	61	81	86	92	51	8	19

SSBEE-C

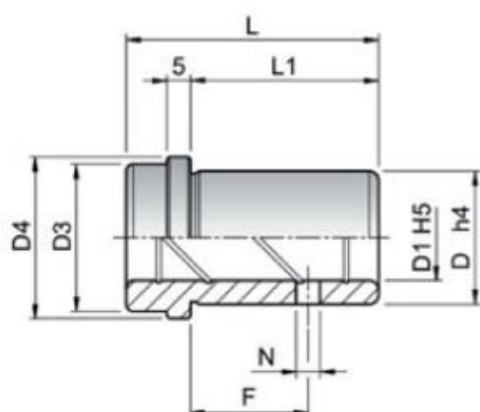
D1	L	L1	D	D3	D4	D5	N	F
18-19	50	37	28	29	34	20,5	5	8
24-25	55	42	38	38	44	25,5	5	12
30-32	60	47	45	47	53	31,5	5	16
40-42	67	54	54	57	63	36,5	8	19
50-52	75	62	65	73	79	44,5	8	19
63	90	77	81	86	92	51	8	19

SSBEE-MC

Todas las dimensiones son en mm
All dimensions are in mm

Ejemplo de orden:
Order example:

SS-BEE-D1xL



D1	L	L1	D	D3	D4	D5
18-19	50	18	28	31	34	20,5
24-25	55	23	38	40	44	25,5
30-32	60	26	45	49	53	31,5
40-42	67	30	54	59	63	36,5
50-52	75	35	65	75	79	44,5
63	90	48	81	87	92	51

SSBEE-M

D1	L	L1	D	D3	D4	D5
18-19	70	18	28	31	34	20,5
24-25	80	23	38	40	44	25,5
30-32	90	26	45	49	53	31,5
40-42	100	30	54	59	63	36,5
50-52	110	35	65	75	79	44,5
63	130	48	81	87	92	51

SSBEE-LC

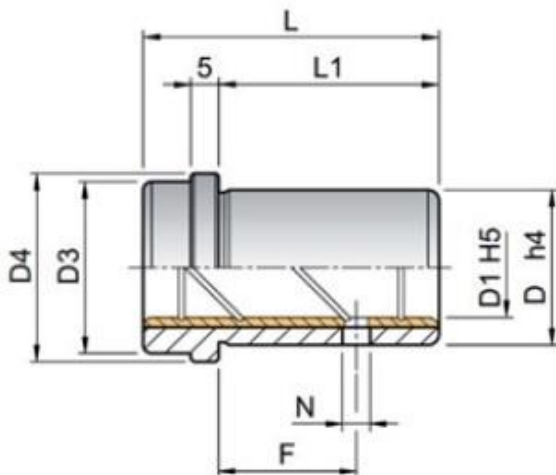
D1	L	L1	D	D3	D4	D5
18-19	70	27	28	31	34	20,5
24-25	80	32	38	40	44	25,5
30-32	90	37	45	49	53	31,5
40-42	100	47	54	59	63	36,5
50-52	110	57	65	75	79	44,5
63	130	67	81	87	92	51

SSBEE-L

Todas las dimensiones son en mm
All dimensions are in mm

Ejemplo de orden:
Order example:

SS-BEE-D1xL



MATERIAL / MATERIAL

Acero 1.7131 / steel 1.7131

TRATAMIENTO TÉRMICO / HEAT TREATMENT
cementación-aceleración / carburizing and quenching

DUREZA / HARDNESS
60÷62 HRC

D1	L	L1	D	D3	D4	D5	N	F
18-19	31	18	28	29	34	20,5	5	8
24-25	36	23	38	38	44	25,5	5	9
30-32	43	30	45	47	53	31,5	5	11
40-42	51	38	54	57	63	36,5	8	11
50-52	61	48	65	73	79	44,5	8	14
63	74	61	81	86	92	51	8	19
80	91	78	100	104	111	60,5	8	19

SSBEE/B-C

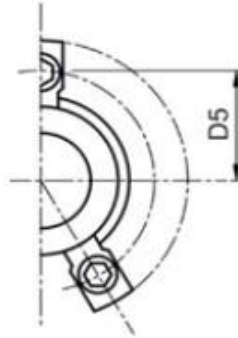
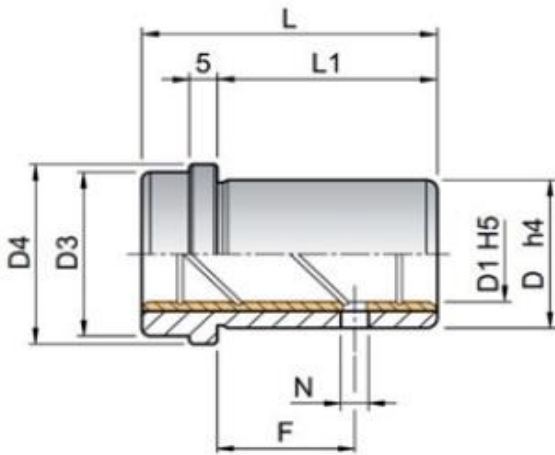
D1	L	L1	D	D3	D4	D5	N	F
18-19	50	37	28	29	34	20,5	5	8
24-25	55	42	38	38	44	25,5	5	12
30-32	60	47	45	47	53	31,5	5	16
40-42	67	54	54	57	63	36,5	8	19
50-52	75	62	65	73	79	44,5	8	19
63	90	77	81	86	92	51	8	19

SSBEE/B-MC

Todas las dimensiones son en mm
All dimensions are in mm

Ejemplo de orden:
Order example:

SS-BEE/B-D1xL



D1	L	L1	D	D3	D4	D5
18-19	50	18	28	31	34	20,5
24-25	55	23	38	40	44	25,5
30-32	60	26	45	49	53	31,5
40-42	67	30	54	59	63	36,5
50-52	75	35	65	75	79	44,5
63	90	48	81	87	92	51
80	100	48	100	108	111	60,5

SSBEE/B-M

D1	L	L1	D	D3	D4	D5
18-19	70	18	28	31	34	20,5
24-25	80	23	38	40	44	25,5
30-32	90	26	45	49	53	31,5
40-42	100	30	54	59	63	36,5
50-52	110	35	65	75	79	44,5
63	130	48	81	87	92	51
80	150	48	100	108	111	60,5

SSBEE/B-LC

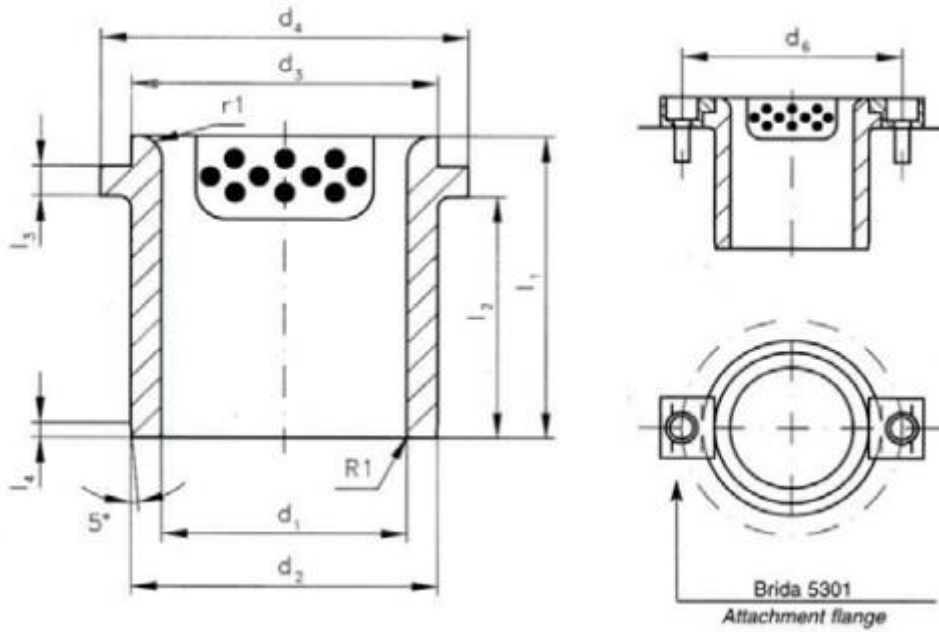
D1	L	L1	D	D3	D4	D5
18-19	70	27	28	31	34	20,5
24-25	80	32	38	40	44	25,5
30-32	90	37	45	49	53	31,5
40-42	100	47	54	59	63	36,5
50-52	110	57	65	75	79	44,5
63	130	67	81	87	92	51
80	150	77	100	108	111	60,5

SSBEE/B-L

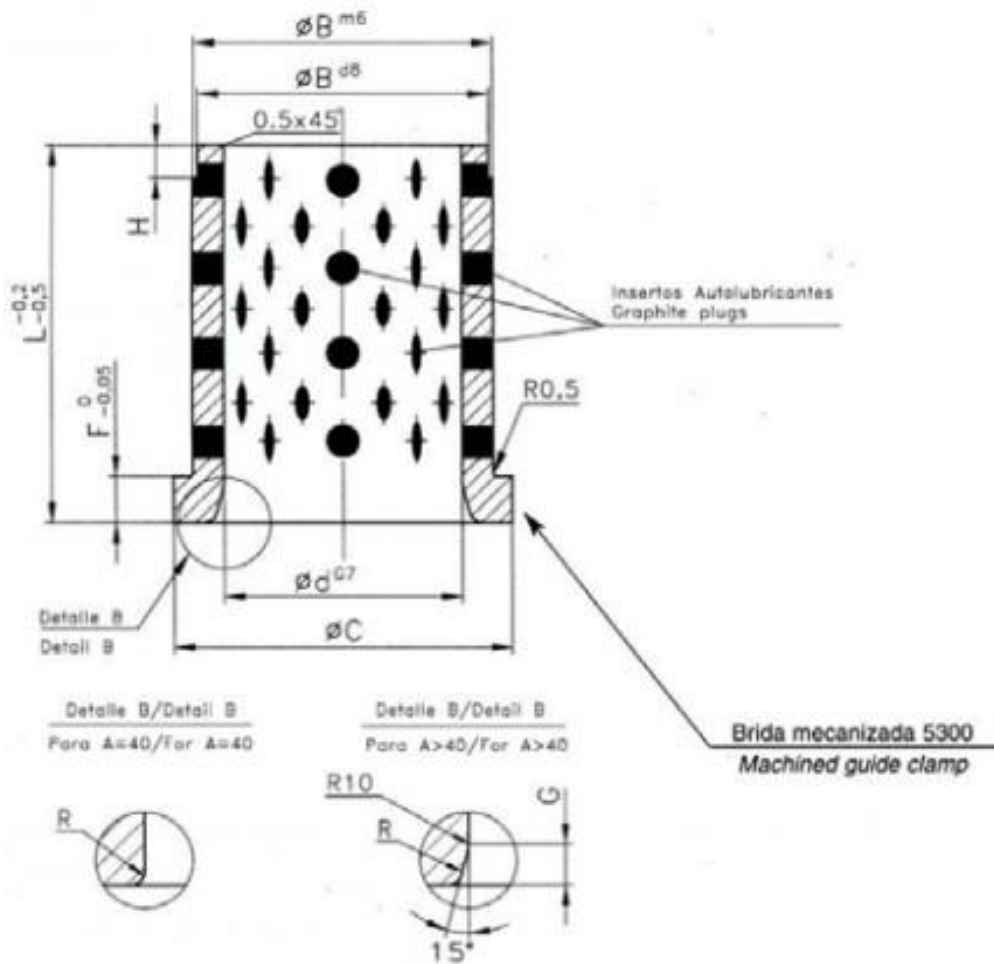
Todas las dimensiones son en mm
All dimensions are in mm

Ejemplo de orden:
Order example:

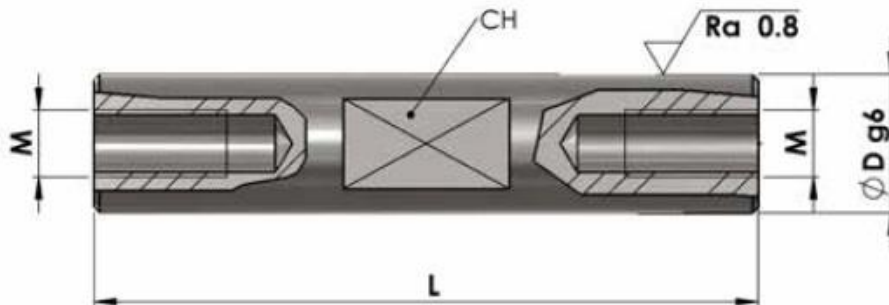
SS-BEE/B-D1xL



d	d2	d3	d5	L1	L3	L4	L5	r
25	32	40	58	40	6,3	3	10	3
30	40	50	66	50	6,3	4	12	3
32	40	50	66	50	6,3	4	12	3
38	50	63	79	63	6,3	5	15	3
40	50	63	79	63	6,3	5	15	3
48	63	71	89	71	6,3	6,3	17	5
50	63	71	89	71	6,3	6,3	17	5
60	80	90	123	80	10	10	19	6
63	80	90	123	80	10	10	19	6
80	100	112	143	100	10	10	22	8
100	125	140	168	125	10	10	21	10
125	160	180	203	160	10	10	30	12
160	200	220	243	200	10	10	32	18



d	L	B	C	F	G	H
20	32	28	32	4		4
25	40	35	40	5		5
32	50	44	50	6		6
40	63	52	60	8		8
50	80	63	71	10	8	8
63	100	80	90	12	10	10
80	125	100	112	16	10	10
100	160	125	140	20	10	10



MATERIAL / MATERIAL

Acero 1.7131 / steel 1.7131

TRATAMIENTO TÉRMICO / HEAT TREATMENT

cementación-aceleración / carburizing and quenching

DUREZA / HARDNESS

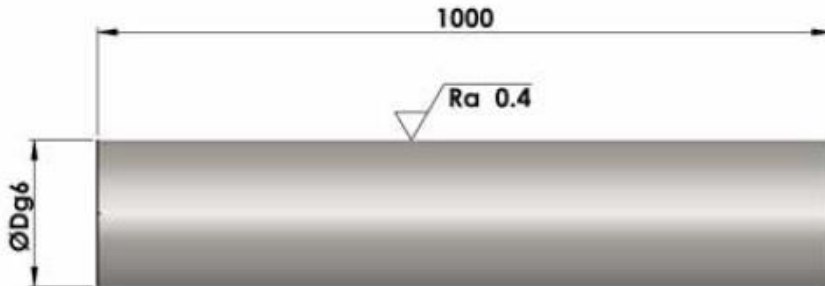
60-62 HRC

L								CH	M	D
100	120	140	160	180	200	220	240			
◆	◆	◆	◆					10	6	12
◆	◆	◆	◆	◆				12	8	14
◆	◆	◆	◆	◆	◆			13	10	16
◆	◆	◆	◆	◆	◆	◆	◆	17	12	20
	◆	◆	◆	◆	◆	◆	◆	19	12	25

Todas las dimensiones son en mm
All dimensions are in mm

Ejemplo de orden:
Order example:

SS-TF-DxL



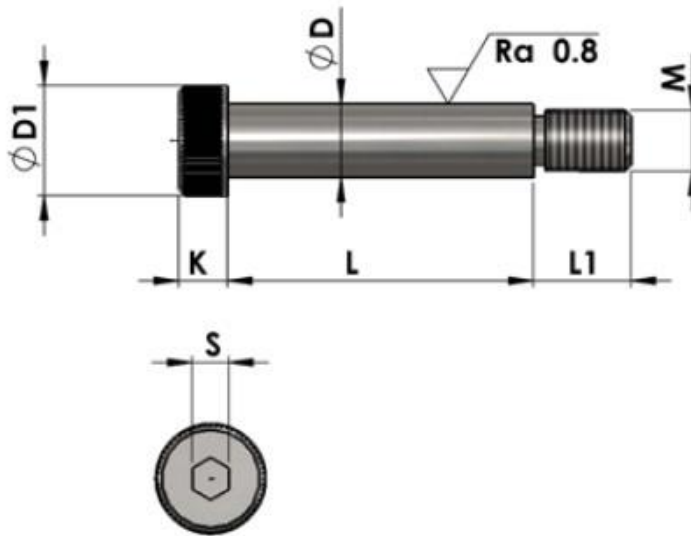
MATERIAL / MATERIAL
Cf 53
LONGITUD / LENGHT
1000 mm
DUREZA / HARDNESS
60-62 HRC

D																					
5	6	8	10	12	14	15	16	18	20	25	28	30	32	35	40	45	50	60	70	80	100
◆	◆	◆	◆	◆	◆	◆	◆	◆	◆	◆	◆	◆	◆	◆	◆	◆	◆	◆	◆	◆	◆

Todas las dimensiones son en mm
All dimensions are in mm

Ejemplo de orden:
Order example:

SS-A/TR-D



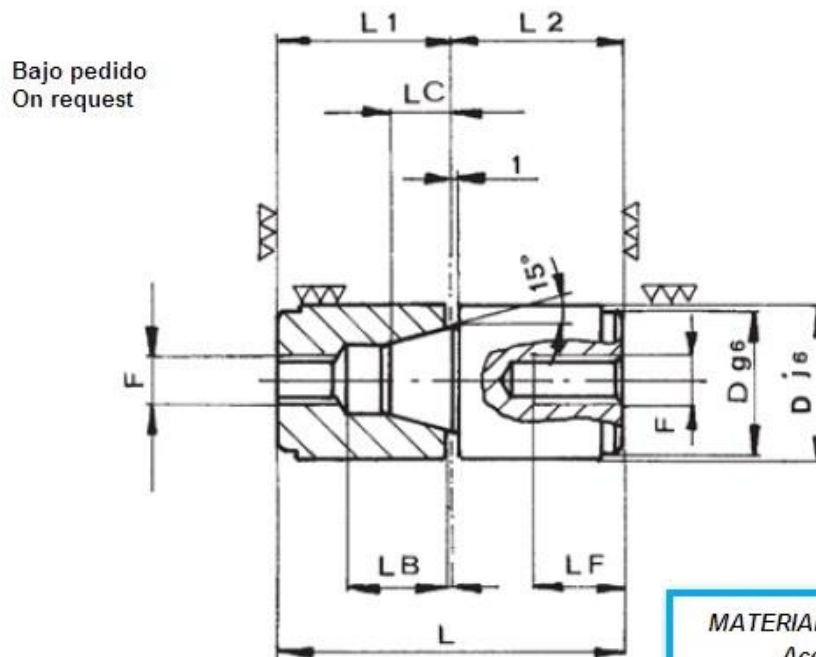
MATERIAL/MATERIAL
UNI 12.9
RESISTENCIA / SHEAR STRENGTH
730 N/mm²
DUREZA / HARDNESS
38÷44 RC h9

D	6	8	10	12	16	20	24	
M	M 5x0,8	M 6x1	M 8x1,25	M 10x1,5	M 12x1,75	M 16x2	M 20x2,5	
D1	10	13	16	18	24	30	36	
K	4,5	5,5	7	9	11	14	16	
L1	9,5	11	13	16	18	22	27	
S	3	4	5	6	8	10	12	
L	10	◆	◆					
	12	◆	◆					
	16	◆	◆	◆	◆			
	20	◆	◆	◆	◆			
	25	◆	◆	◆	◆			
	30	◆	◆	◆	◆	◆		
	35	◆	◆	◆	◆			
	40	◆	◆	◆	◆	◆	◆	
	45	◆	◆	◆	◆			
	50	◆	◆	◆	◆	◆	◆	◆
	55		◆	◆	◆			
	60		◆	◆	◆	◆	◆	◆
	65		◆	◆	◆			
	70			◆	◆	◆	◆	◆
	80			◆	◆	◆	◆	◆
90				◆	◆	◆	◆	
100				◆	◆	◆	◆	
120					◆	◆	◆	

Todas las dimensiones son en mm
All dimensions are in mm

Ejemplo de orden:
Order example:

SS-VR-DxL



MATERIAL / MATERIAL
 Acero 1.7131 / steel 1.7131
TRATAMIENTO TÉRMICO / HEAT TREATMENT
 cementación-aceleración / carburizing and quenching
DUREZA / HARDNESS
 60÷62 HRC

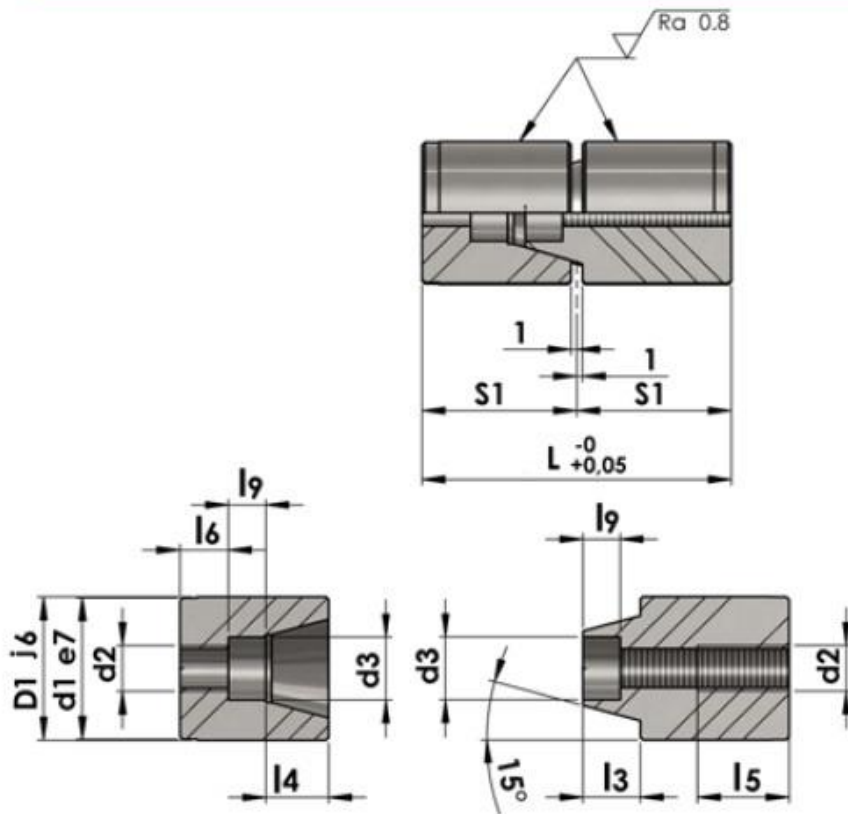
D	L1	L2	L	LB	LF	FMA
16	17	17	34	11		5 MA
20	27	27	54	15	15	8 MA
25	27	27	54	16	15	8 MA
26	27	27	54	16	15	8 MA
30	36	36	72	20	18	10 MA
32	36	36	72	20	18	10 MA
40	46	46	92	25	18	10 MA
42	46	46	92	25	18	10 MA

* Bajo pedido / On request

Todas las dimensiones son en mm
 All dimensions are in mm

Ejemplo de orden:
 Order example:

SS-CC-D1



MATERIAL / MATERIAL

Acero 1.7131 / steel 1.7131

TRATAMIENTO TÉRMICO / HEAT TREATMENT
cementación-aceleración / carburizing and quenching

DUREZA / HARDNESS
60÷62 HRC

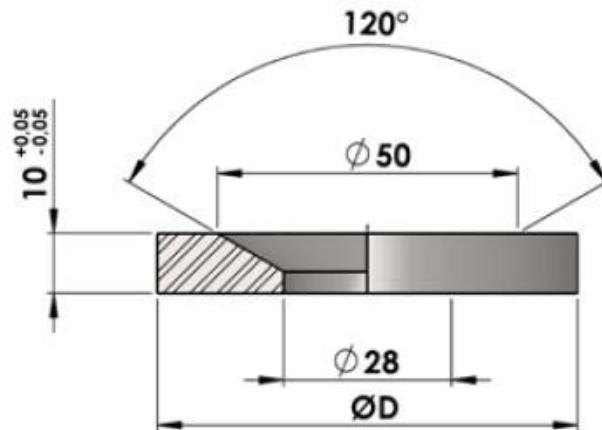
D1	D2	D3	VITE SCREW	S1	L	L3	L4	L5	L6	L9
20	M8	11	M6	27	54	9	10	19,7	10,6	6,5
25		11	M6	27	54	10	11	19,7	9,2	6,5
26		11	M6	27	54	10	11	19,7	9,2	6,5
30	M10	14	M8	36	72	14	16	25	12,2	8,5
32		14	M8	36	72	14	16	25	12,2	8,5
40		14	M8	46	92	14	16	25	12,2	8,5
42		14	M8	46	92	18	20	27	16,8	8,5

* *Bajo pedido / On request*

Todas las dimensiones son en mm
All dimensions are in mm

Ejemplo de orden:
Order example:

SS-CCN-D1



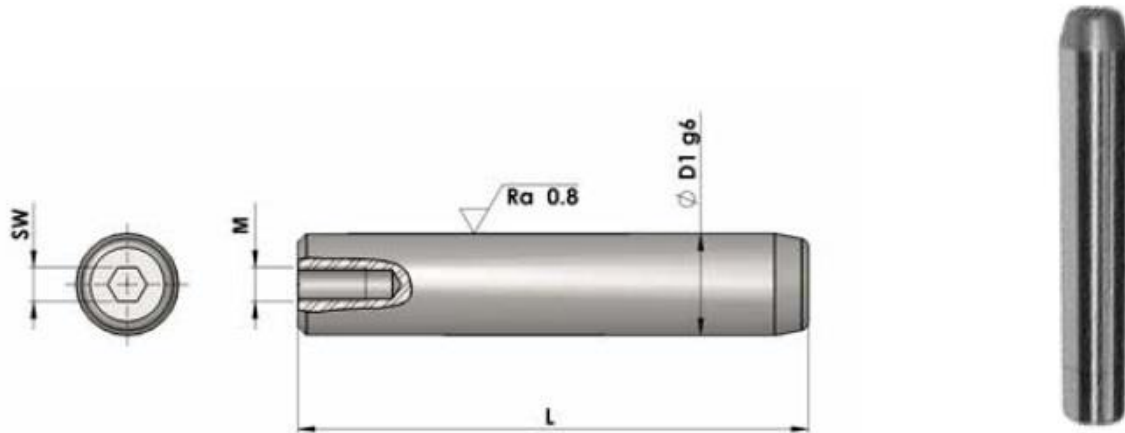
MATERIAL / MATERIAL
acero 1.7131 / steel 1.7131

D	Ø 60	Ø 70	Ø 80	Ø 90	Ø 100	Ø 125
---	------	------	------	------	-------	-------

Todas las dimensiones son en mm
All the values within the tables are expressed in mm

Ejemplo de orden:
Order example:

SS-AC-D



MATERIAL / MATERIAL
acero 1.7131 / steel 1.7131

TRATAMIENTO TÉRMICO / HEAT TREATMENT
caso reincidental / case hardened

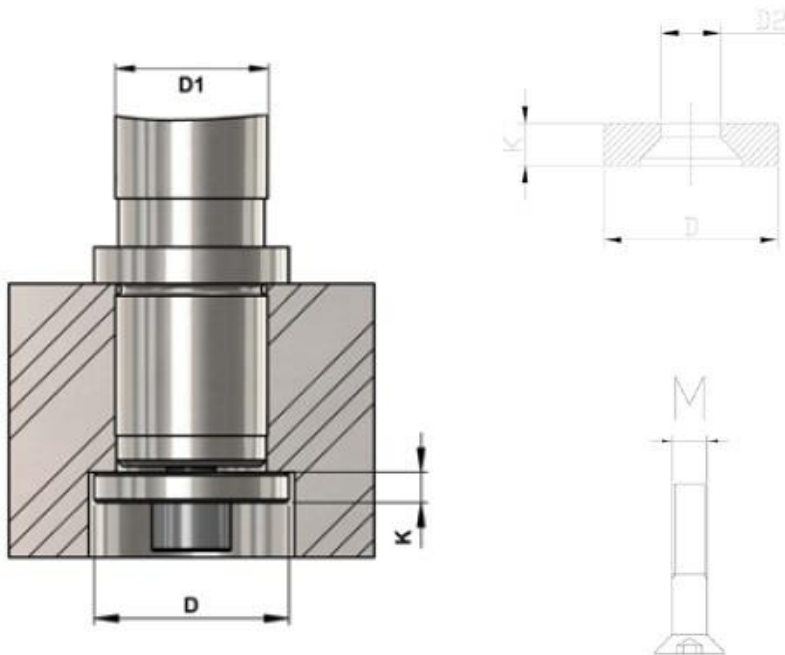
DUREZA / HARDNESS
60-62 HRC

D	M	SW	L									
			70	80	90	100	120	140	160	180	200	220
10	6	4	◆	◆	◆	◆	◆					
12	6	5	◆	◆	◆	◆	◆					
14	6	5		◆	◆	◆	◆	◆	◆			
16	8	6				◆	◆	◆	◆	◆		
18	8	6				◆	◆	◆	◆	◆	◆	
20	10	8				◆	◆	◆	◆	◆	◆	
22	10	8				◆	◆					
24	12	8					◆	◆	◆	◆	◆	◆

Todas las dimensiones son en mm
All dimensions are in mm

Ejemplo de orden:
Order example:

SS-C10-D-L



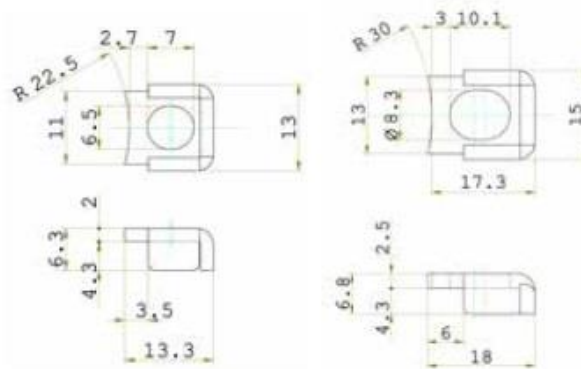
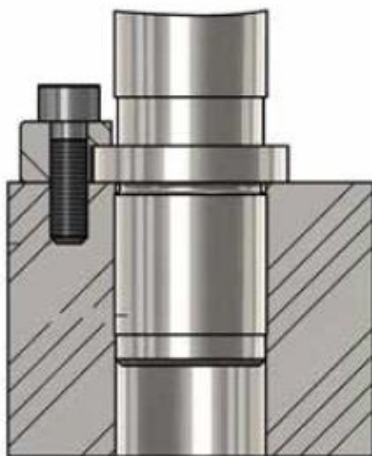
ARANDELA Washer				
	D1	D	K	D2
R1	18-19	25	6	9
R2	24-25	32	7	11
R3	30-32	40	7	11
R4	40-42	50	9	13
R5	50-52	62	9	13
R6	63	73	9	13
R7	80	93	12	13

ISO 10642

TORNILLOS PARA ARANDELAS Screws for washers	
Vro1	8x20
Vro2	12x30

Ejemplo de orden: R-D1xVro
Order example:

ABRAZADERAS Clamps		
ST6	ST8	ST8 AS



ISO 7380

TORNILLOS PARA ABRAZADERAS Screws for clamps	
Vst1	6x16
Vst2	8x20

Todos los valores son en mm
All the values within the tables are expressed in mm

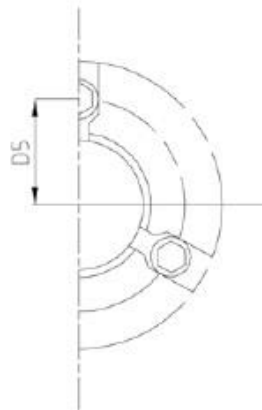
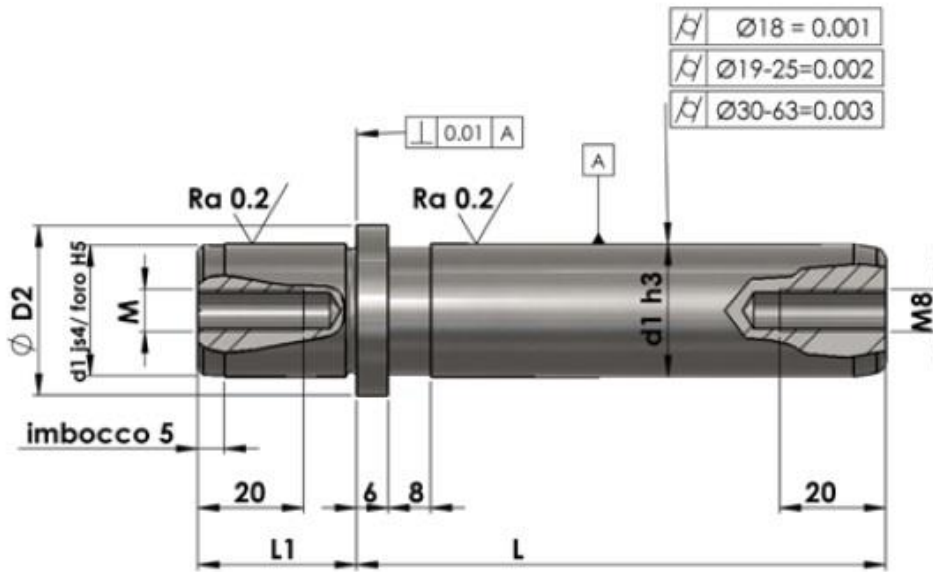
Ejemplo de orden: S-Vst
Order example:



C
A
T
Á
L
O
G
O
S

IMT
INGENIERÍA DE MOLDES
Y TROQUELES

20
URTEAURRENA
ANIVERSARIO



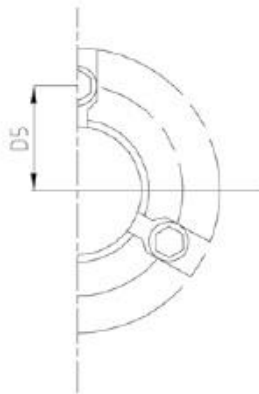
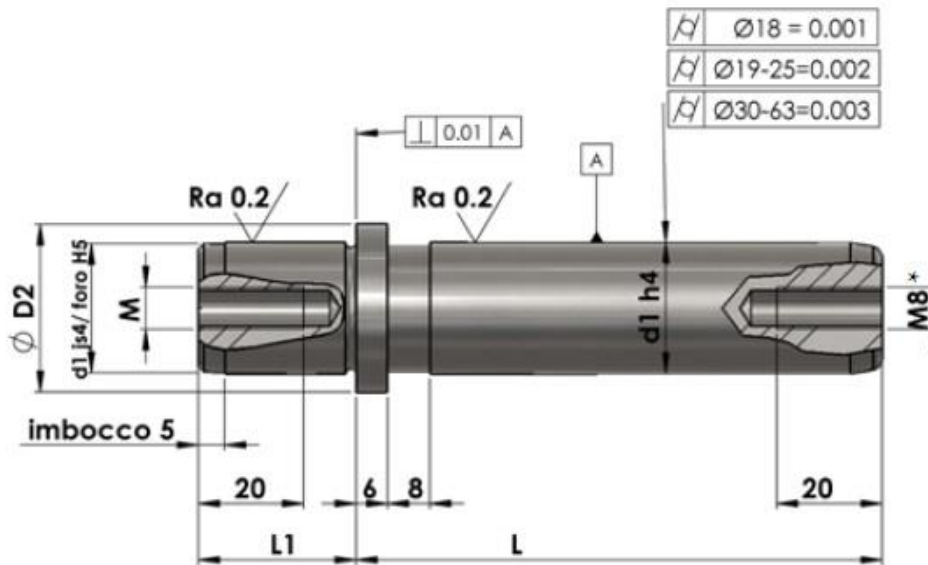
MATERIAL / MATERIAL
acero 1.7131 / steel 1.7131
TRATAMIENTO TÉRMICO / HEAT TREATMENT
cementación-aceleración / carburizing and quenching
DUREZA / HARDNESS
61-63 HRC

D1	D3	M	D5	L1	L2												
					100	112	125	140	160	180	200	224	250	280	315	355	400
19-20	25	8	18	23	◆	◆	◆	◆	◆	◆	◆						
24-25	32	8	21,5	30	◆	◆	◆	◆	◆	◆	◆	◆					
30-32	40	8	25,5	37		◆	◆	◆	◆	◆	◆	◆	◆	◆			
38-40	50	8	30,5	37			◆	◆	◆	◆	◆	◆	◆	◆	◆		
48-50	63	8	37	47				◆	◆	◆	◆	◆	◆	◆	◆	◆	◆
60-63	80	8	45,5	47					◆	◆	◆	◆	◆	◆	◆	◆	◆
80	93	12	53	59							◆	◆	◆	◆	◆	◆	◆

Todas las dimensiones son en mm
All the values within the tables are expressed in mm

Ejemplo de orden:
Order example:

ICE3-D1xL



MATERIAL / MATERIAL
acero 1.7131 / steel 1.7131
TRATAMIENTO TÉRMICO / HEAT TREATMENT
cementación-aceleración / carburizing and quenching
DUREZA / HARDNESS
61-63 HRC

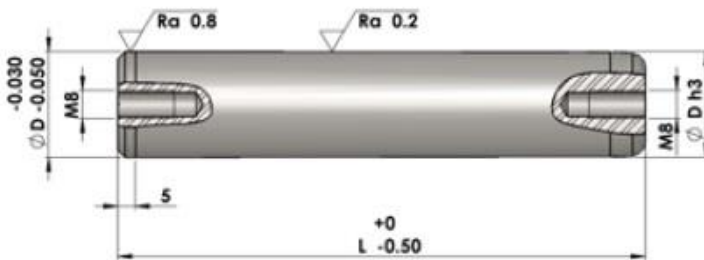
*No en D1 15-16
*Not on D1 15-16

D1	D3	M	D5	L1	L2												
					100	112	125	140	160	180	200	224	250	280	315	355	400
15-16	22	8	16,5	20	◆	◆	◆	◆	◆	◆	◆						
19-20	25	8	18	23	◆	◆	◆	◆	◆	◆	◆						
24-25	32	8	21,5	30	◆	◆	◆	◆	◆	◆	◆	◆	◆				
30-32	40	8	25,5	37		◆	◆	◆	◆	◆	◆	◆	◆	◆			
38-40	50	8	30,5	37			◆	◆	◆	◆	◆	◆	◆	◆	◆		
48-50	63	8	37	47				◆	◆	◆	◆	◆	◆	◆	◆	◆	
60-63	80	8	45,5	47					◆	◆	◆	◆	◆	◆	◆	◆	◆
80	93	12	53	59							◆	◆	◆	◆	◆	◆	◆

Todas las dimensiones son en mm
All the values within the tables are expressed in mm

Ejemplo de orden:
Order example:

ICE4-D1xL2



MATERIAL / MATERIAL
acero 1.7131 / steel 1.7131
TRATAMIENTO TÉRMICO / HEAT TREATMENT
cementación-aceleración / carburizing and quenching
DUREZA / HARDNESS
61-63 HRC

L	D							
	19-20	24-25	30-32	38-40	42	48-50	60-63	80
100	◆							
112	◆							
120	□							
125	◆	◆	◆					
130	□							
140	◆	◆	◆					
150	□	□	□					
160	◆	◆	◆	◆				
170	□	□	□	□	□			
180	◆	◆	◆	◆	◆	◆		
190	□	□	□	□	□	□		
200	◆	◆	◆	◆	◆	◆		
210		□	□	□	□	□		
220		□	□	□	□	□		
224	◆	◆	◆	◆		◆		
230		□	□	□	□	□		
240		□	□	□	□	□		
250	◆	◆	◆	◆	◆	◆	◆	
260		□	□	□	□	□	□	
270		□	□	□	□	□		
280		◆	◆	◆	◆	◆	◆	◆
300		□	□	□	□	□	□	□
315		◆	◆	◆		◆	◆	◆
320				□	□	□	□	□
350				□	□	□		
355		◆	◆	◆		◆	◆	◆
360							□	□
400		◆	◆	◆	◆	◆	◆	◆
450		◆	◆	◆		◆	◆	◆
500		◆	◆	◆		◆	◆	◆

□ Bajo pedido / On request

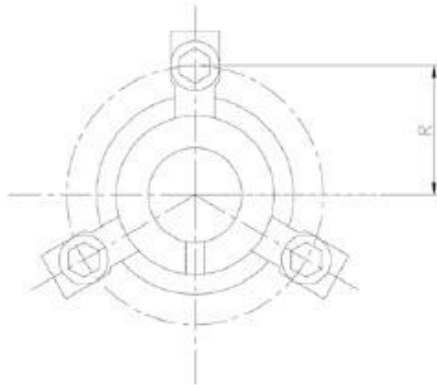
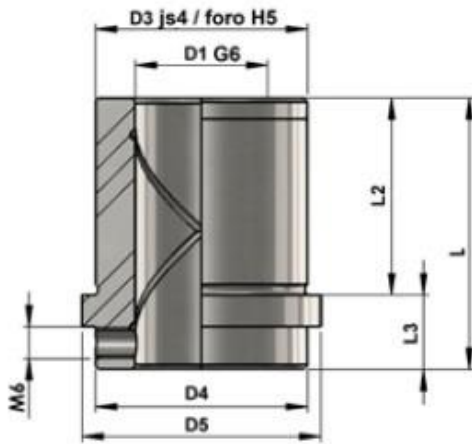
Todos los valores son en mm

All the values within the tables are expressed in mm

Ejemplo de orden:
Order example:

IC8-DxL





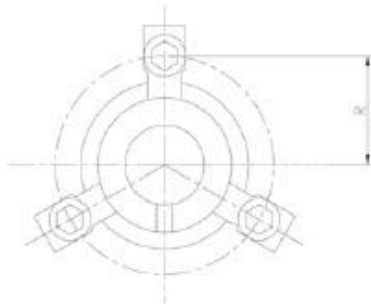
MATERIAL / MATERIAL
acero 1.7131 / steel 1.7131
TRATAMIENTO TÉRMICO / HEAT TREATMENT
cementación-aceleración / carburizing and quenching
DUREZA / HARDNESS
61-63 HRC

IBE-C							
D1	D3	D4	D5	R	L	L2	L3
19	32	32	40	26	35	23	12
20							
24	40	40	48	30	35	23	12
25							
30	48	48	56	33,5	42	30	12
32							
38	58	58	66	38,5	52	37	15
40							
48	70	70	80	45,5	65	47	18
50							
60	85	85	95	53	80	60	20
63							

Todas los valos son en mm
All the values within the tables are expressed in mm

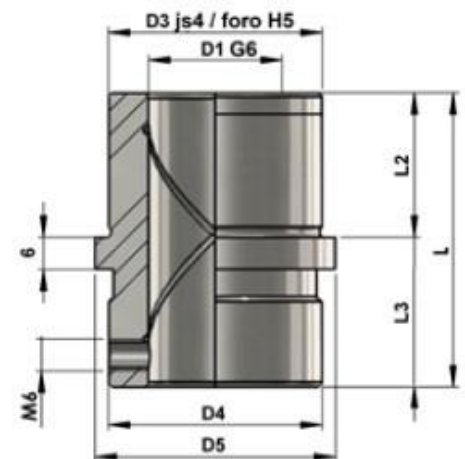
Ejemplo de orden:
Order example:

IBE-C-D1xL

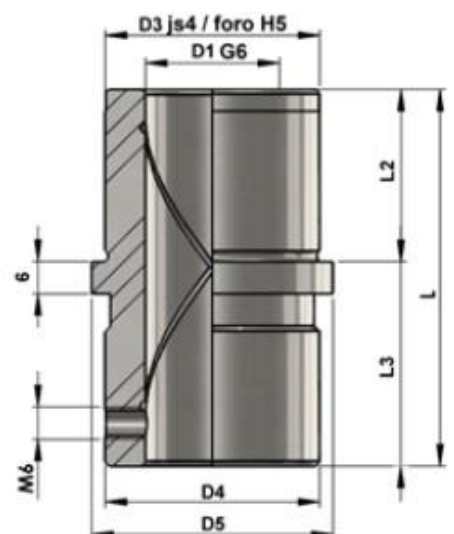


MATERIAL / MATERIAL
acero 1.7131 / steel 1.7131
TRATAMIENTO TÉRMICO / HEAT TREATMENT
cementación-aceleración / carburizing and quenching
DUREZA / HARDNESS
61-63 HRC

IBE-M								
D1	D3	D4	D5	D8	R	L	L2	L3
19	32	32	40	39	26	43	23	20
20								
24	40	40	48	46	30	59	23	36
25								
30	48	48	56	53	33,5	75	30	45
32								
38	58	58	66	63	38,5	82	37	45
40								
48	70	70	80	77	45,5	97	47	50
50								
60	85	85	95	92	53	116	60	56
63								

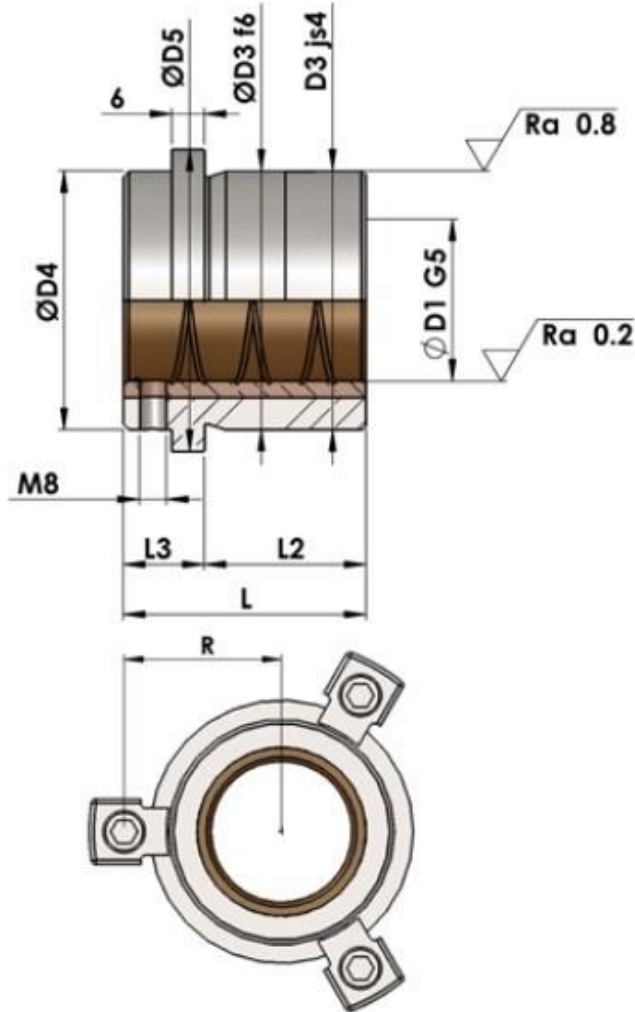


IBE-L								
D1	D3	D4	D5	D8	R	L	L2	L3
19	32	32	40	39	26	59	23	36
20								
24	40	40	48	46	30	79	23	56
25								
30	48	48	56	53	33,5	93	30	63
32								
38	58	58	66	63	38,5	108	37	71
40								
48	70	70	80	77	45,5	127	47	80
50								
60	85	85	95	92	53	150	60	90
63								



Todos los valores son en mm
All the values within the tables are expressed in mm

Ejemplo de orden:
Order example: IBE-M-D1xL



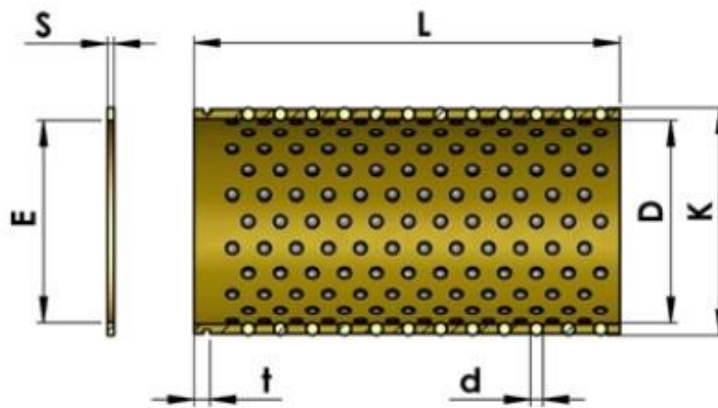
MATERIAL / MATERIAL
acero 1.7131 + bronce / steel 1.7131 + bronze
TRATAMIENTO TÉRMICO / HEAT TREATMENT
cementación-aceleración / carburizing and quenching
DUREZA / HARDNESS
52+54 HRC

IBE/B-C							
D1	D3	D4	D5	R	L	L2	L3
19	32	32	40	26	35	23	12
20							
24	40	40	48	30	35	23	12
25							
30	48	48	56	33,5	42	30	12
32							
38	58	58	66	38,5	52	37	15
40							
48	70	70	80	45,5	65	47	18
50							
60	85	85	95	53	80	60	20
63							

Todos los valores son en mm
All the values within the tables are expressed in mm

Ejemplo de orden:
Order example:

IBE/B-C-D1xL



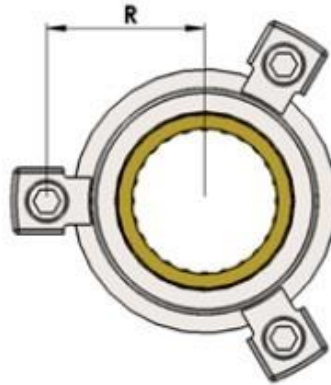
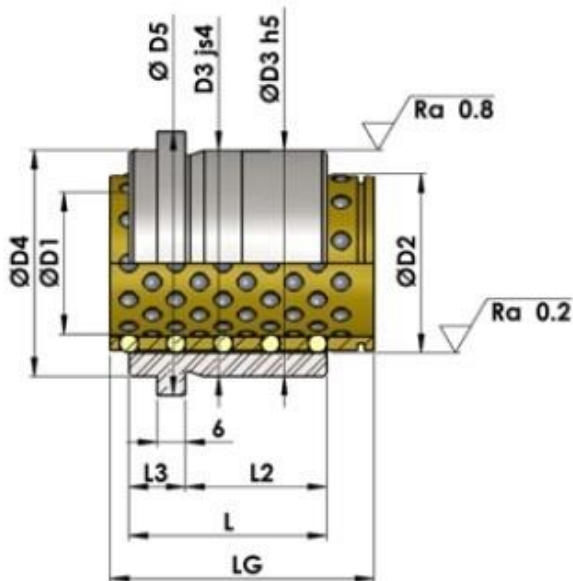
El anillo (segger) es incluido en el suministro
The ring (segger) is included in the supply

D	19	20	24	25	30	32	38	40	48	50	60	63	80	
K	25	26	30	31	38	40	46	48	56	58	68	71	92	
d	3		3		4		4		4		4		6	
t	2,9		3,2		3,95		3,95		4,25		4,75		6,15	
L	40			133	95	100								
	45	144		171	114	120	132	138						
	50				133	140	154	161	182	189				
	56	176		209	152	160	176	184						
	63						220	230	260	270				
	71	240		285	209	220								
	80	272		323	247	260	286	299	312	324				
	95	336		399	285	300	330	345	390	405	450	480		
	105				323	340	374	391	442	459	510	544		
	120			494	461	380	440	460	494	513	570	608	540	
	140				418	440	484	506	572	594	660	704	648	
	160				513	540	572	598	676	702	780	832	756	
	180							660	690	780	810	900	960	864
	200							748	782	884	918	1020	1088	972
240							880	920	1040	1080	1200	1280	1152	

Todos los valores son en mm
All the values within the tables are expressed in mm

Ejemplo de orden:
Order example:

GSC-DxL



MATERIAL / MATERIAL
acero 1.7131 / steel 1.7131
TRATAMIENTO TÉRMICO / HEAT TREATMENT
cementación-aceleración / carburizing and quenching
DUREZA / HARDNESS
61-63 HRC

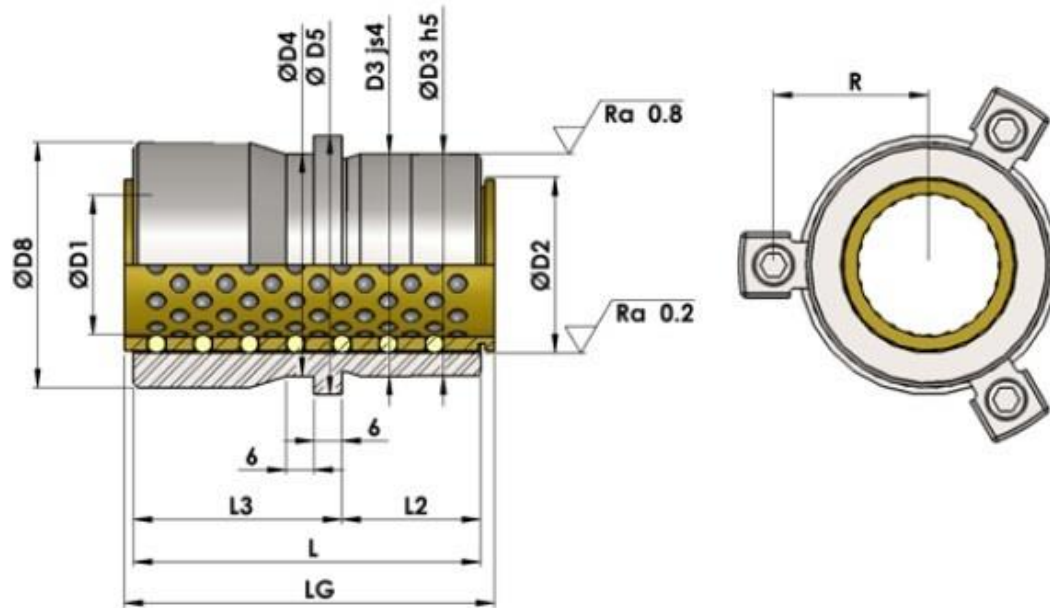
BEG-M										
D1	D2	D3	D4	D5	D8	R	L	L2	L3	LG
19-20	25-26	32	32	40	39	26	43	23	20	56
24-25	30-31	40	40	48	46	30	59	23	36	71
30-32	38-40	48	48	56	53	33,5	75	30	45	95
38-40	46-48	58	58	66	63	38,5	82	37	45	105
48-50	56-58	70	70	80	77	45,5	97	47	50	120
60-63	68-71	85	85	95	92	53	116	60	56	140
80	92	105	105	118	115	64,5	120	60	60	140

BEG-L										
D1	D2	D3	D4	D5	D8	R	L	L2	L3	LG
19-20	25-26	32	32	40	39	26	59	23	36	71
24-25	30-31	40	40	48	46	30	79	23	56	95
30-32	38-40	48	48	56	53	33,5	93	30	63	120
38-40	46-48	58	58	66	63	38,5	108	37	71	120
48-50	56-58	70	70	80	77	45,5	127	47	80	140
60-63	68-71	85	85	95	92	53	150	60	90	160
80	92	105	105	118	115	64,5	150	60	90	160

Todos los valores son en mm
All the values within the tables are expressed in mm

Ejemplo de orden:
Order example:

BEG-M-DxL



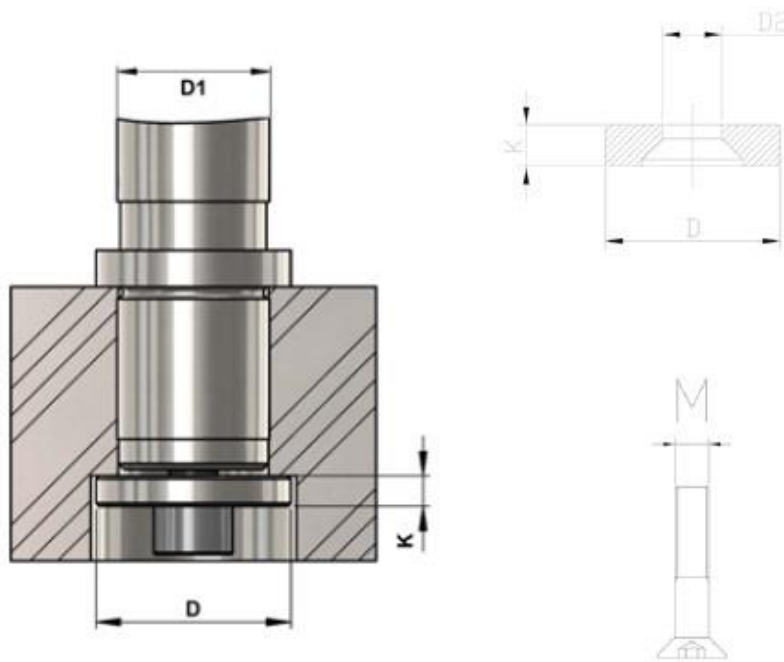
BEG-C									
D1	D2	D3	D4	D5	R	L	L2	L3	LG
19-20	25-26	32	32	40	26	35	23	12	45
24-25	30-31	40	40	48	30	35	23	12	45
30-32	38-40	48	48	56	33,5	42	30	12	56
38-40	46-48	58	58	66	38,5	52	37	15	63
48-50	56-58	70	70	80	45,5	65	47	18	80
60-63	68-71	85	85	95	53	80	60	20	95
80	92	105	105	118	64,5	80	60	20	120

BEG-X										
D1	D2	D3	D4	D5	D8	R	L	L2	L3	LG
24-25	30-31	40	40	48	46	30	55	30	25	71
30-32	38-40	48	48	56	53	33,5	69	37	32	80
38-40	46-48	58	58	66	63	38,5	79	47	32	95
48-50	56-58	70	70	80	77	45,5	96	60	36	120

Todos los valores son en mm
All the values within the tables are expressed in mm

Ejemplo de orden:
Order example:

BEG-C-DxL



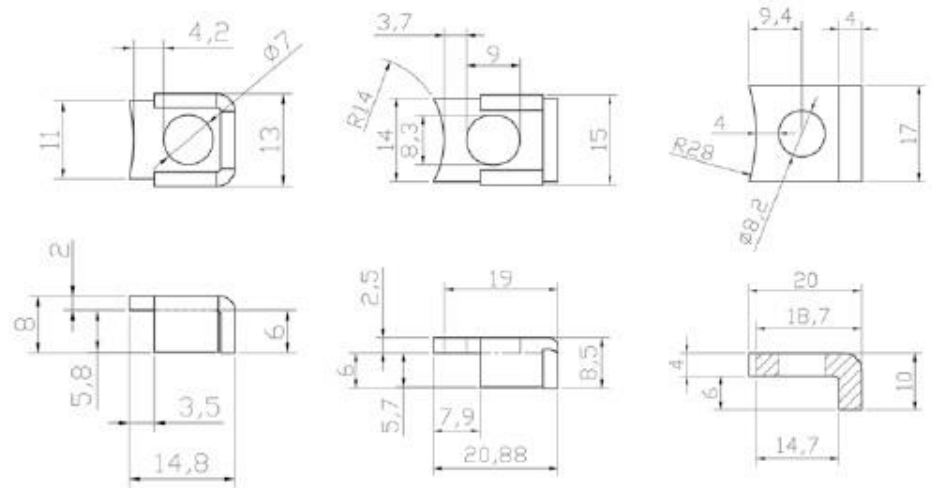
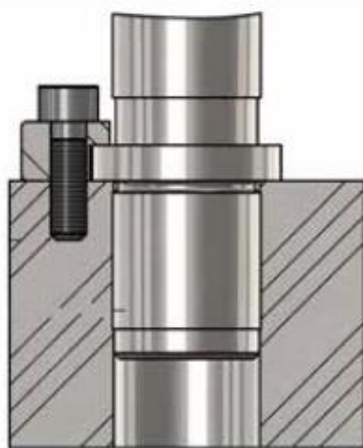
ARANDELAS Washer				
	D1	D	K	D2
RO0	15-16	25	6	8,5
RO1	19-20	25	6	8,5
RO2	24-25	32	6	8,5
RO3	30-32	40	6	8,5
RO4	38-40	50	6	8,5
RO5	48-50	60	6	8,5
RO6	60-63	70	6	8,5
RO7	80	93	12	12,5

ISO 10642

TORNILLOS PARA ARANDELAS Screws for washers	
Vro1	8x20
Vro2	12x30

Esempio ordinazione: RO-D1-Vro
Order example:

ABRAZADERAS Clamps		
ST6AL	ST8AL	ST8PE



ISO 7380

TORNILLOS PARA ABRAZADERAS Screws for clamps	
Vst1	6x16
Vst2	8x20

Todos los valores son en mm
All the values within the tables are expressed in mm

Ejemplo de orden: ST-Vst
Order example:

I.M.T.S.A.

INGENIERIA DE MOLDES Y TROQUELES S.A.

WEB: www.imtsa.net EMAIL: imtsa@imtsa.net

PLAZA EIHERA, 14 BAJO

20305 IRUN (GIPUZKOA)

TLF: 943 57 53 90 FAX: 943 57 53 91

